



Tuition and Fee Policies and Practice



Statutory Mission

- Career education
- General Studies, including
 - Developmental education
 - Adult and continuing education
- Transfer programs
- Student services
- Community service

Board Policy

- **Affordability**
 - Low tuition rates
 - Financial aid to meet direct costs
- **Access**
 - Open admissions
- **Student services**
- **Resources**

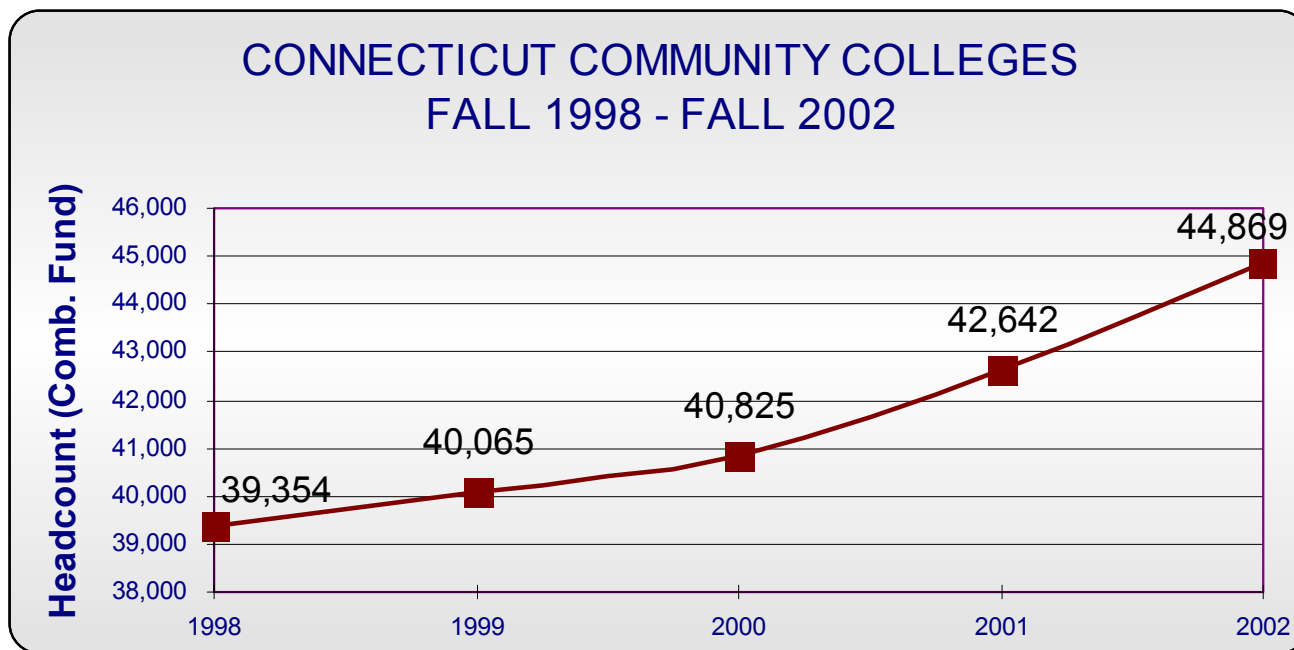
Resources

- Quality and currency of academic programs
- Leading edge technology infrastructure
- Cost inflation
- Recurring resources
 - State and student support
 - Government and private funding
 - Self-supporting extension & auxiliary programs
 - Resource reallocation and efficiency

Why a Community College?

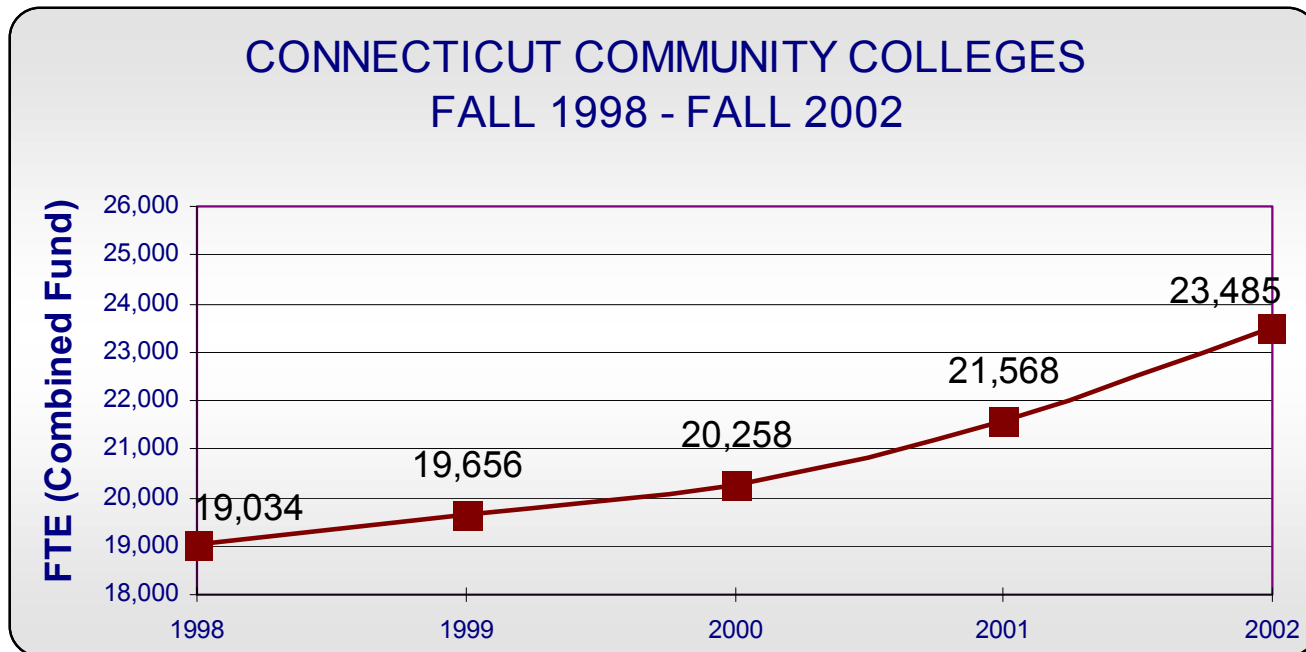
- Upgrading skills for career advancement (11%)
- Career preparation (29%)
- Major life change (12%)
- Personal enrichment/intellectual development with intent to transfer (24%)
- Transfer only (21%)
- No definite purpose for enrolling (2%)

Combined Fund Headcount Enrollment



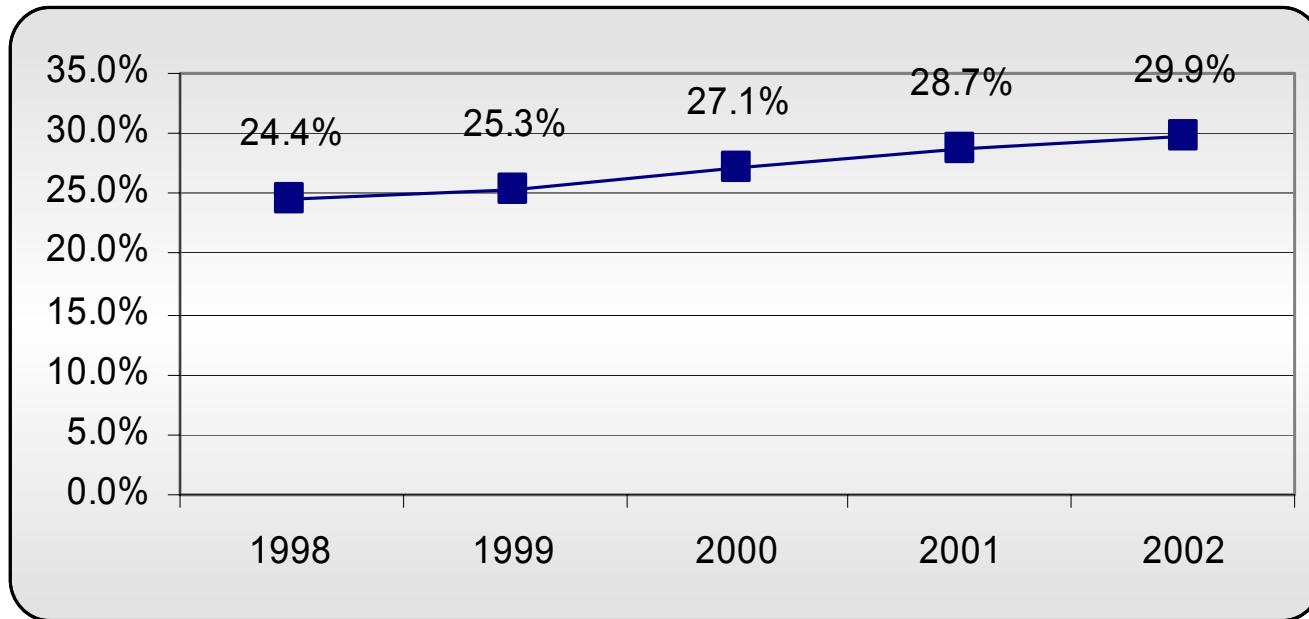
14% increase (1998-2002)

Combined Fund FTE Enrollment



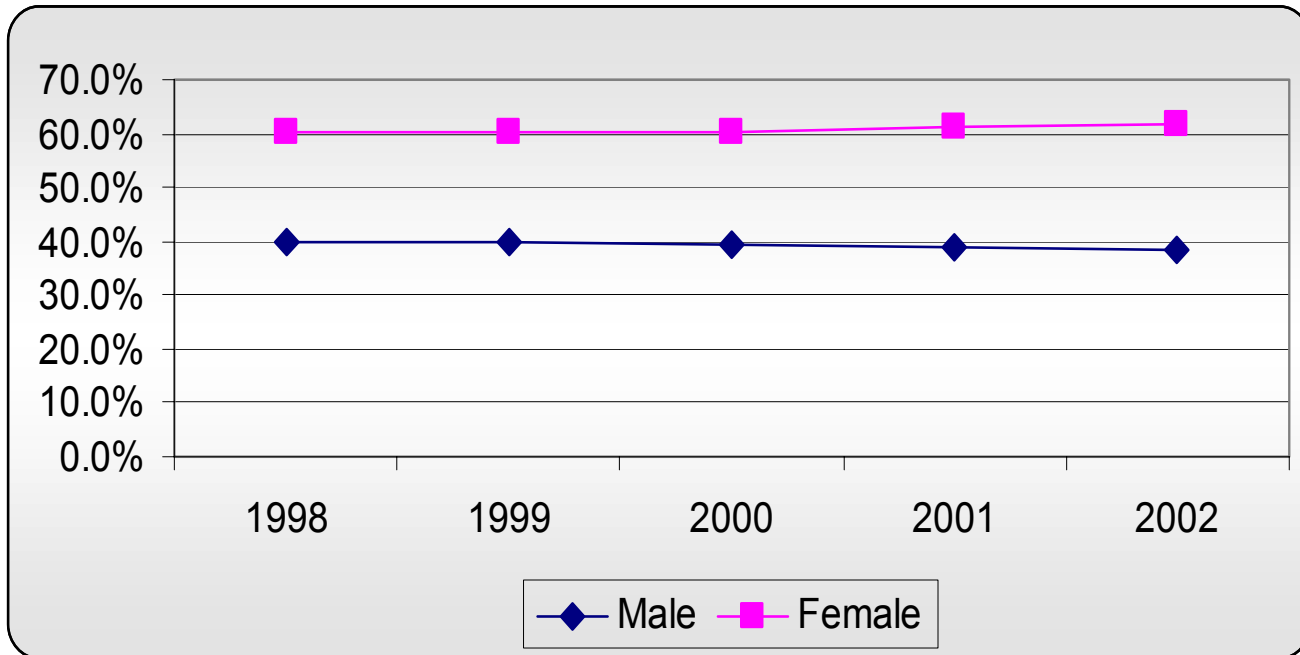
23.4% increase (1998-2002)

Minority Enrollment

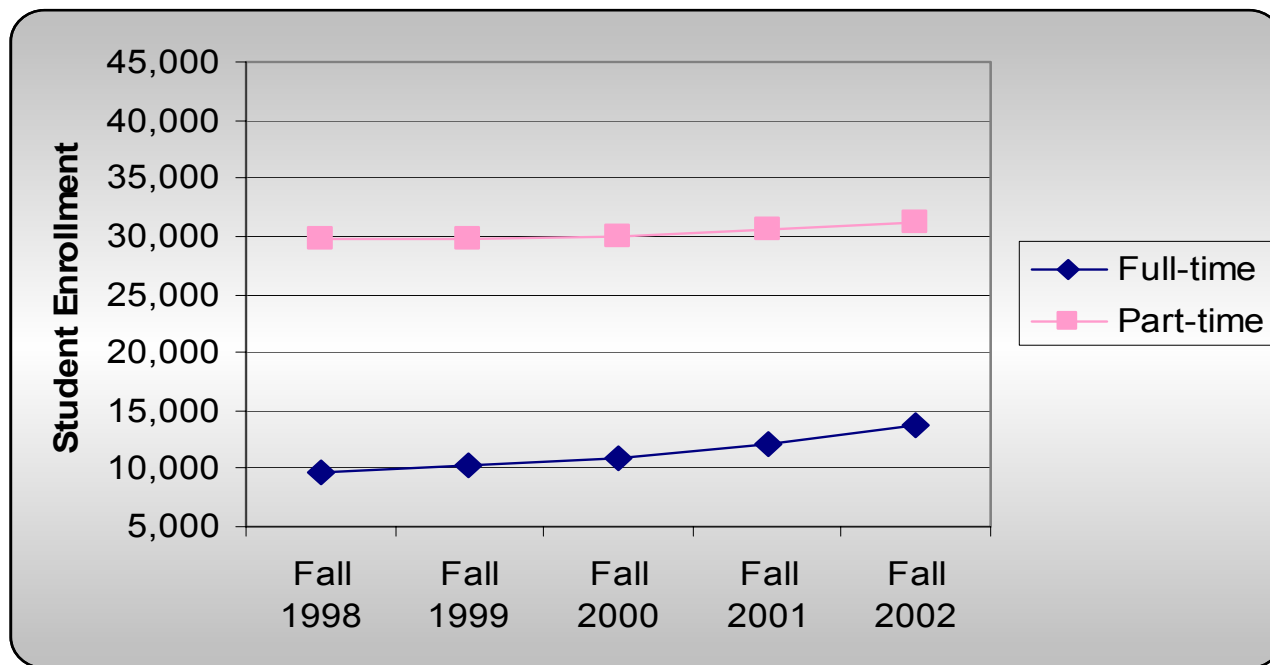


39.4% increase (1998-2002)

Enrollment by Gender



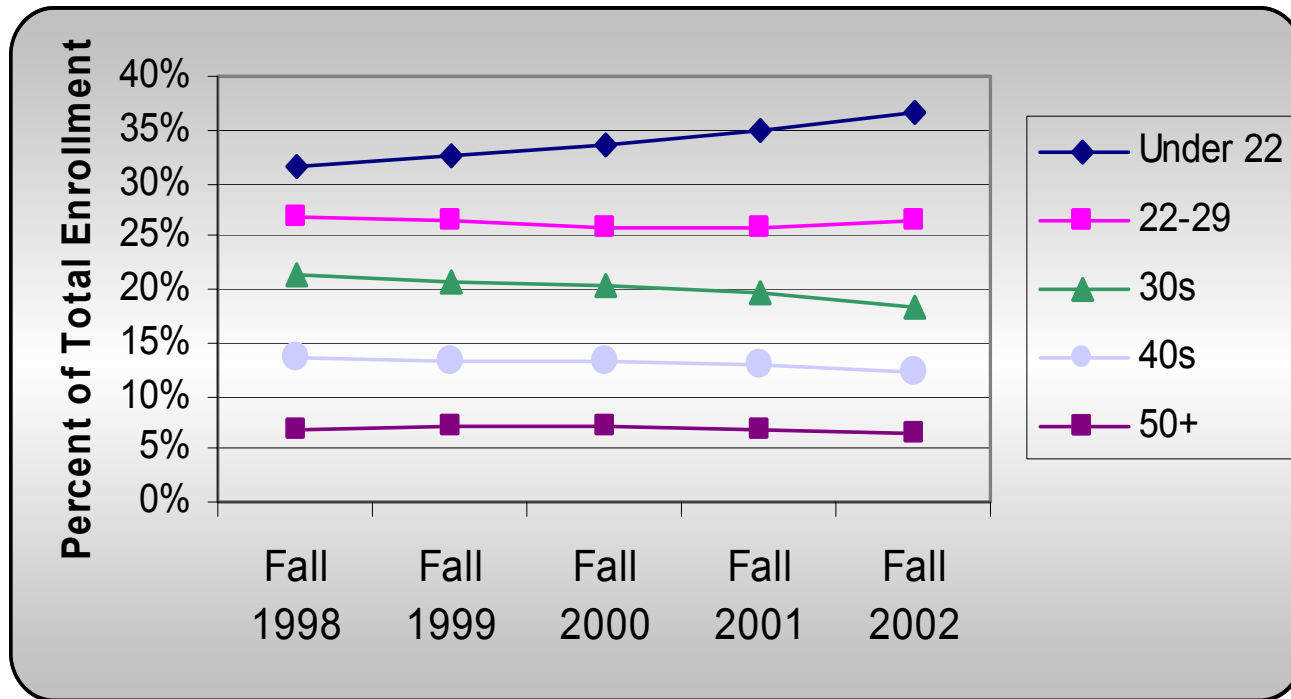
Full- and Part-Time Headcount Enrollment



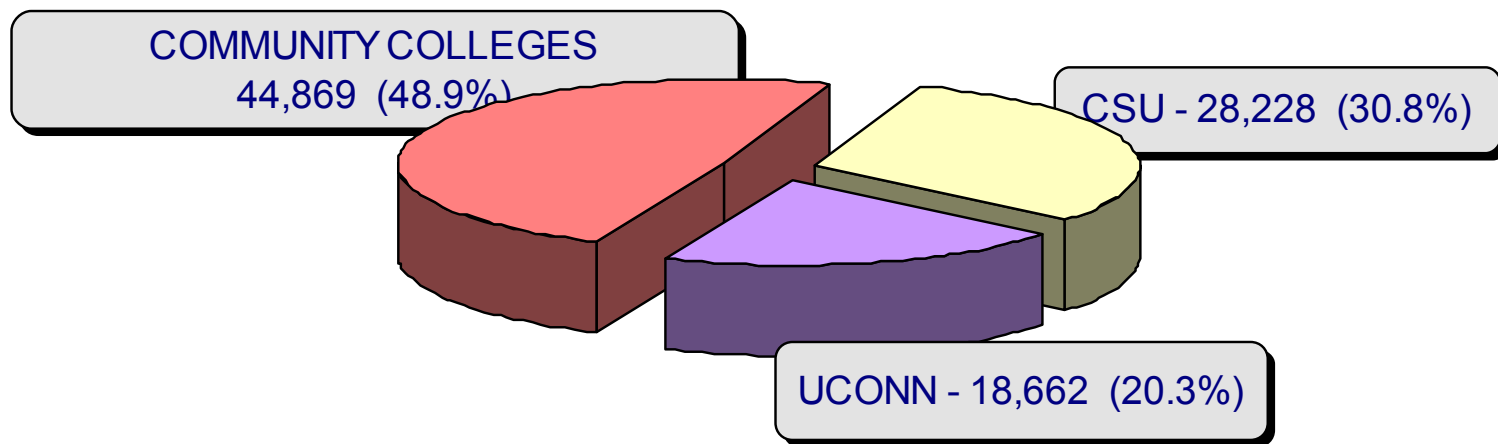
42.1% increase in Full-time Students (1998-2002)

4.9% increase in Part-time Students (1998-2002)

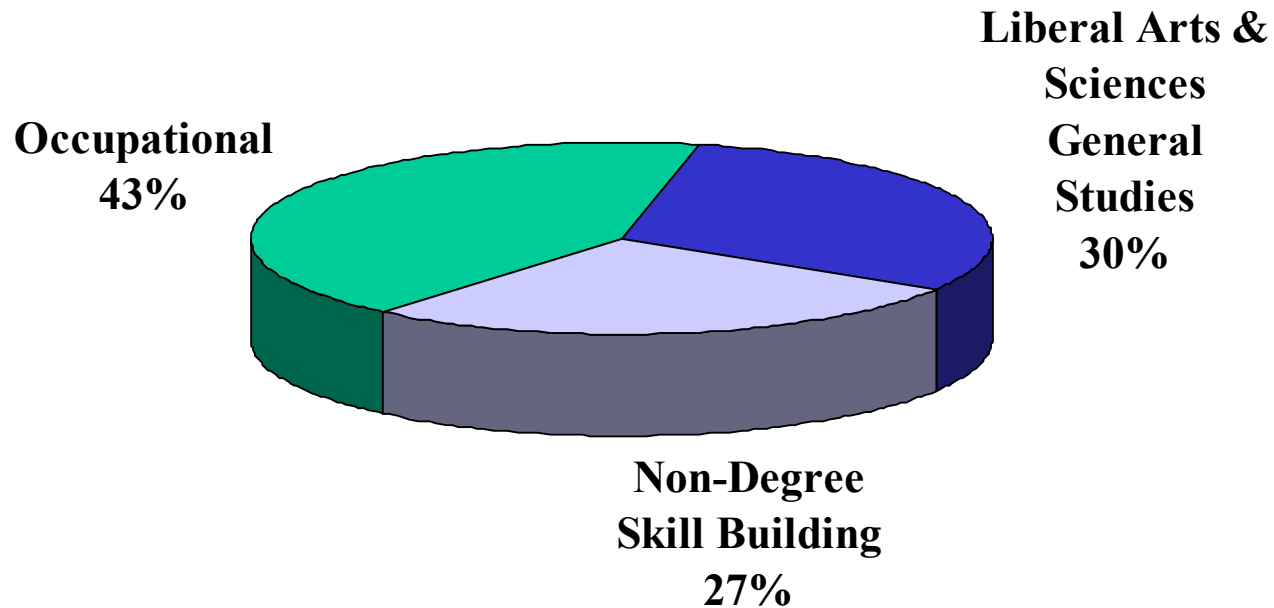
Enrollment by Age



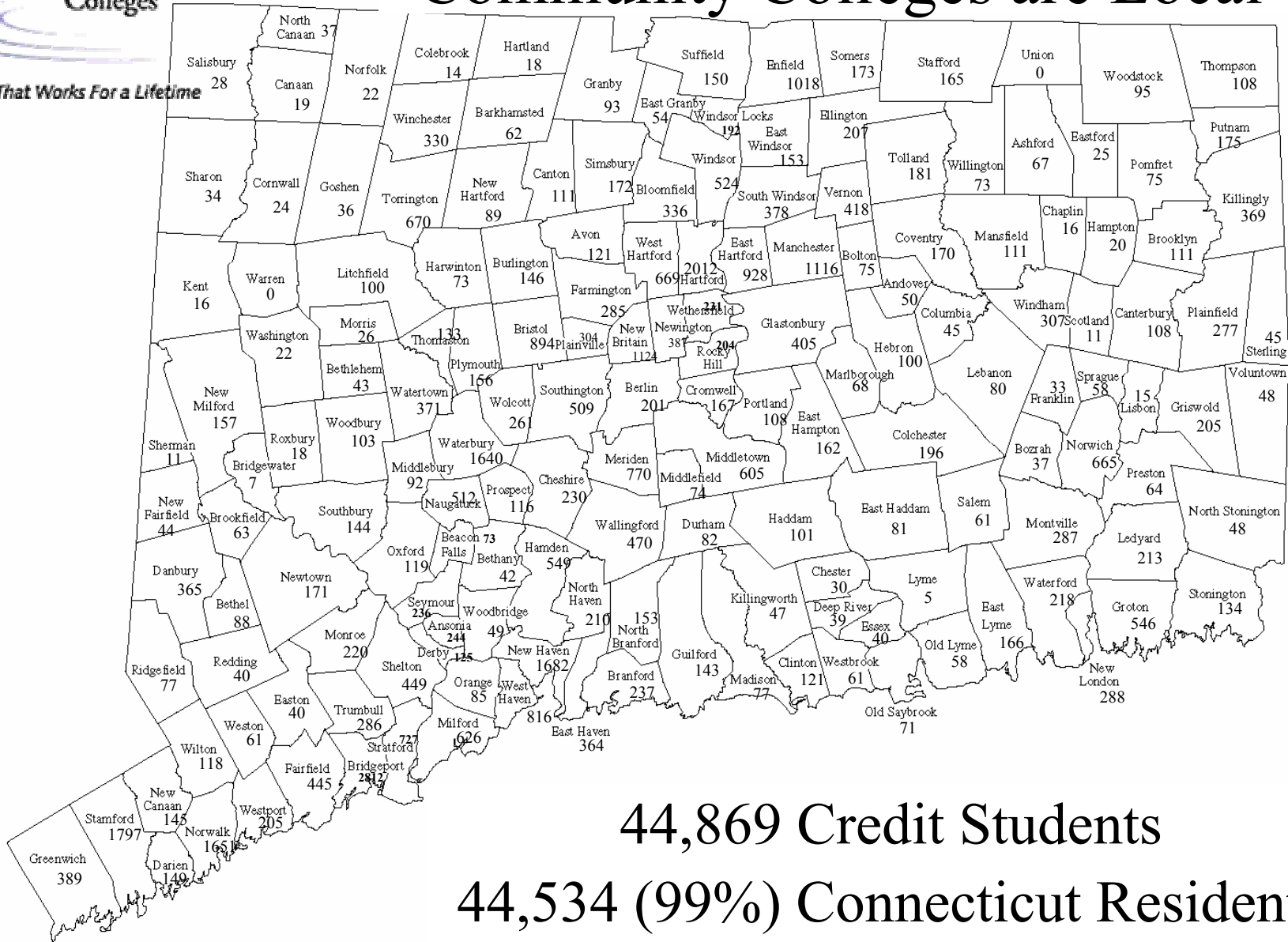
Public Undergraduate Higher Education



Program Enrollment



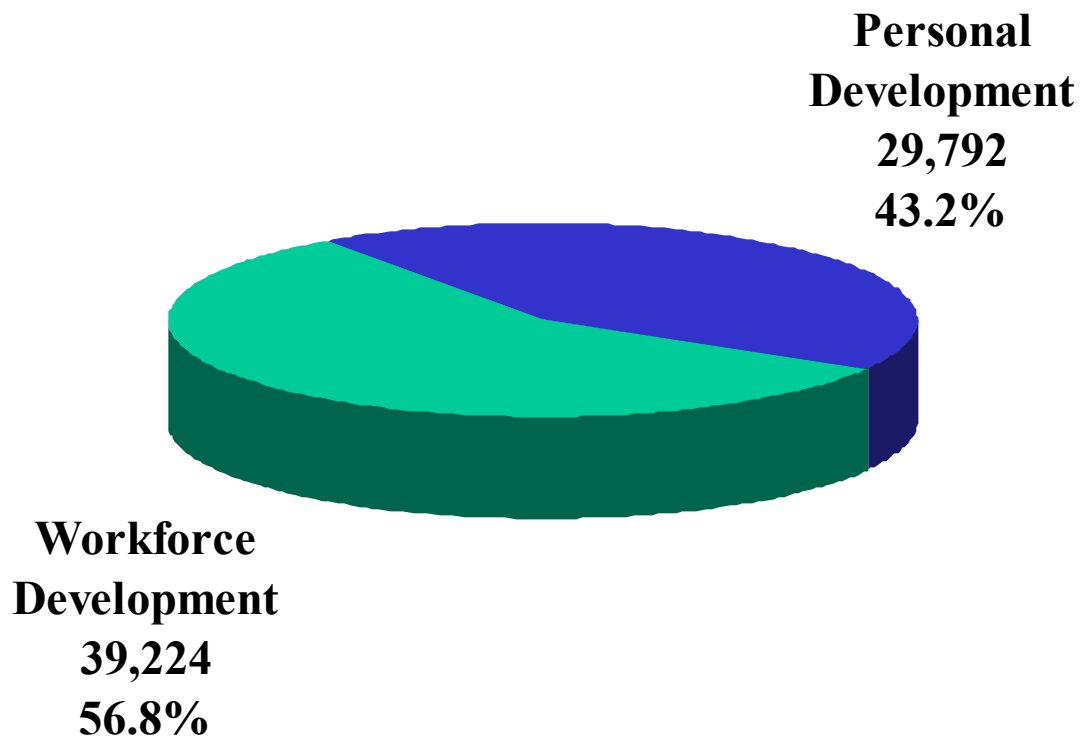
Community Colleges are Local



44,869 Credit Students

44,534 (99%) Connecticut Residents

Non-Credit Registrations 2001-02



Financial Aid Award Policies

- Need-based financial aid
- Meet direct costs
 - Tuition & Fees
 - Books & Supplies
- Discourage loan indebtedness

Typical “Cost of Attendance” (Federal Methodology)

- Tuition and fees
- Books and supplies
- Living expenses
- Transportation
- Personal/Miscellaneous expenses

Typical “Cost of Attendance” for the 2002-03 Award Year

• Tuition and fees	2,034
• Books and supplies	1,000
• Living expenses	6,030
• Transportation	929
• Personal/Miscellaneous	3,605
	<hr/>
TOTAL	\$13,598



Typical Financial Aid Determination for the 2001-02 Award Year

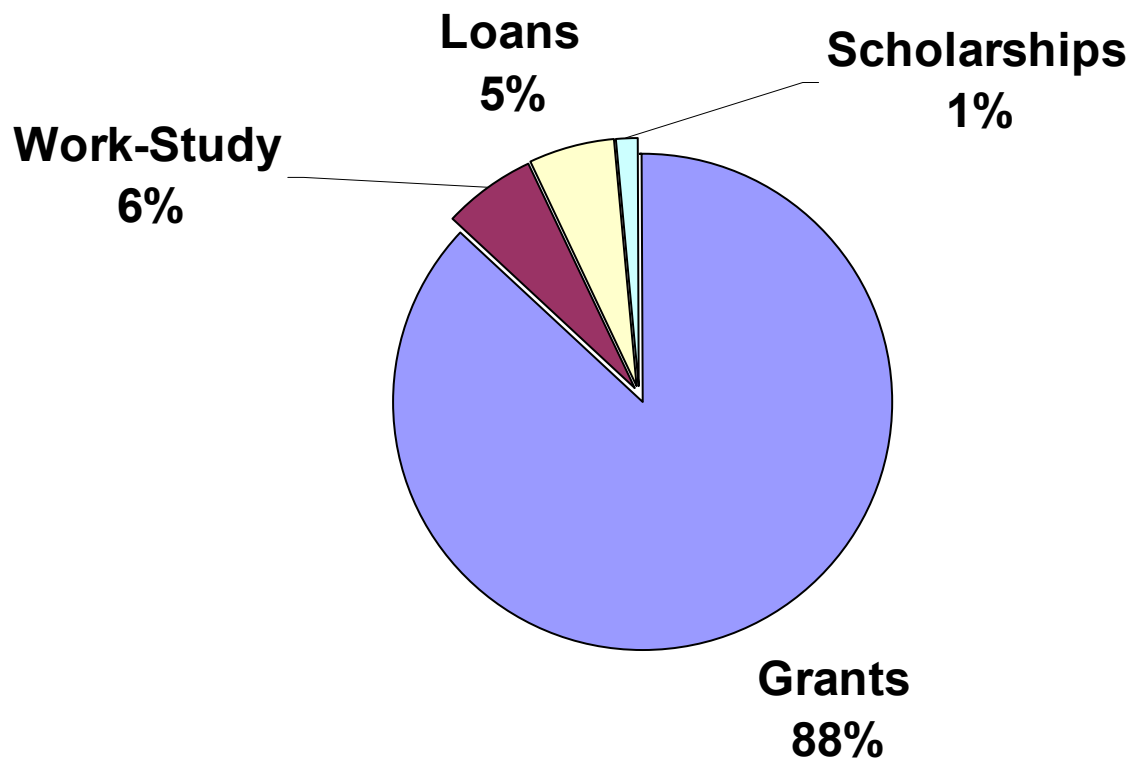
Cost of attendance	\$13,452
Total family contribution	<u>(2,215)</u>
Financial need	\$11,237
Average financial aid	<u>(4,735)</u>
Unmet financial need	\$6,502

2001-2002 Award Year Highlights

- \$32,074,520 in financial aid
- \$18,978,287 from federal sources
- 13,261 financial aid recipients
- 89% of aid is grant/scholarship assistance
- 45% of the students enrolled at least half-time (6 or more credits) received financial aid
- \$48,758,402 in Unmet Financial Need

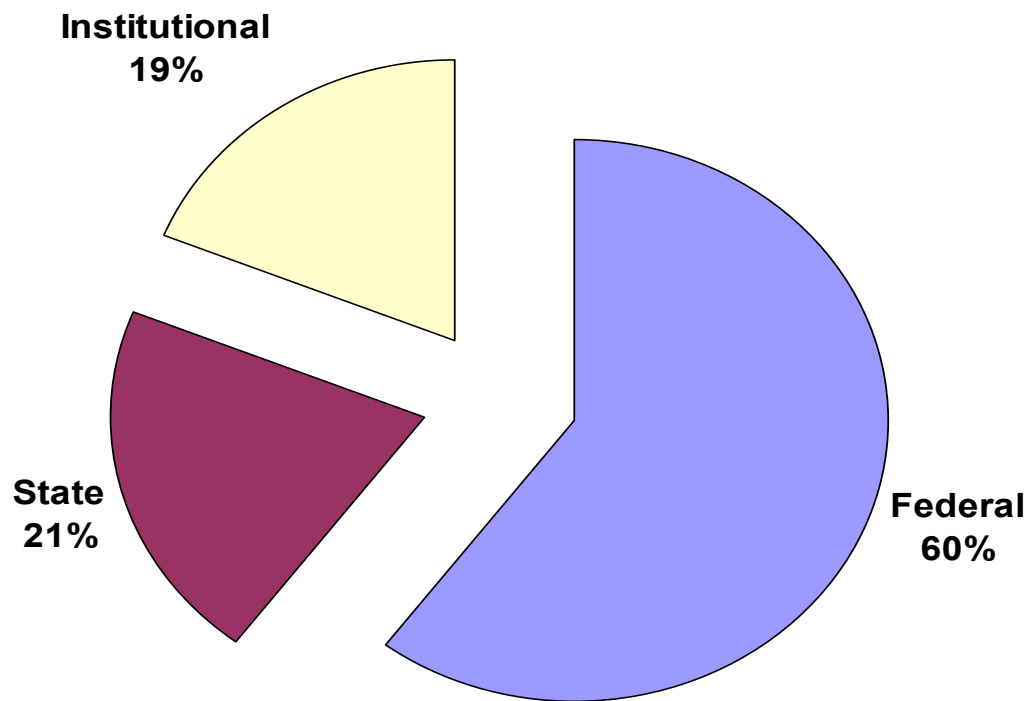
Types of Financial Aid

2001-02 AY



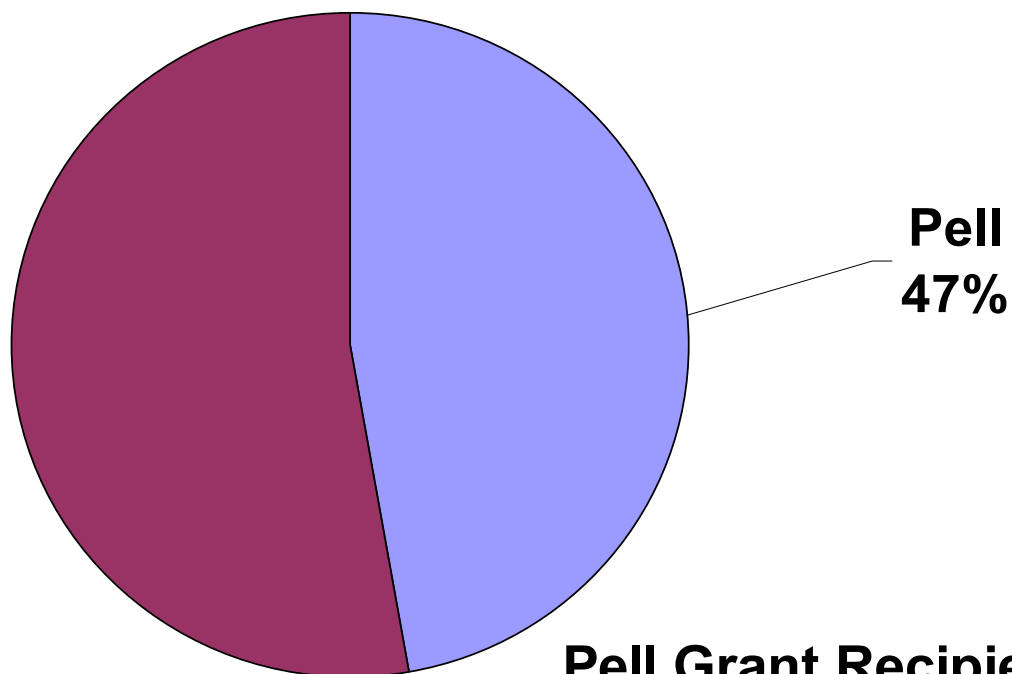
Sources of Financial Aid

2001-02 AY



Pell Grants as Percent of Total Aid

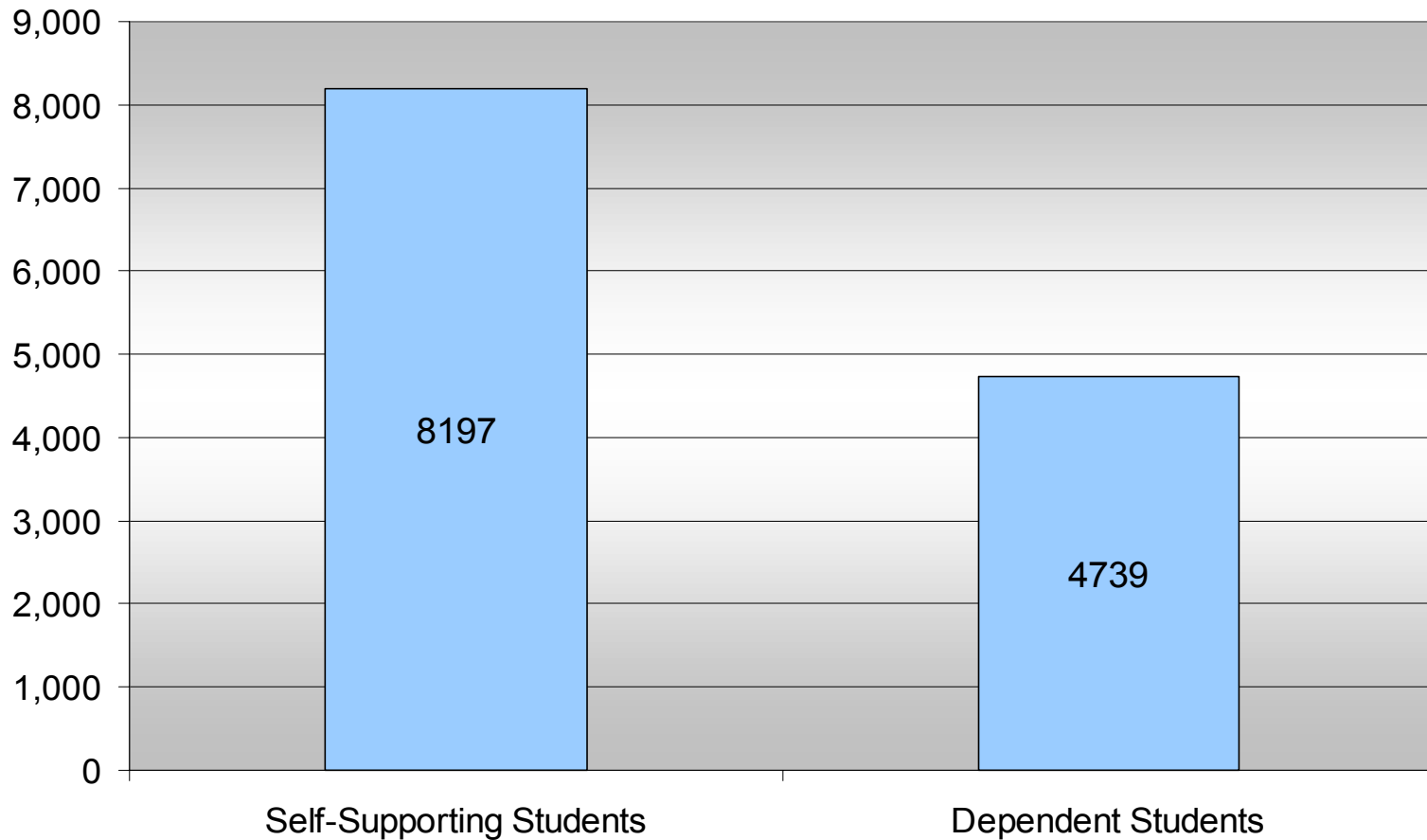
2001-02 AY



Pell Grant Recipients = 8,822

Pell Grant Dollars = \$15,157,158

Financial Aid Recipients Dependency Status



Financial Aid Recipients

Self-Supporting Students

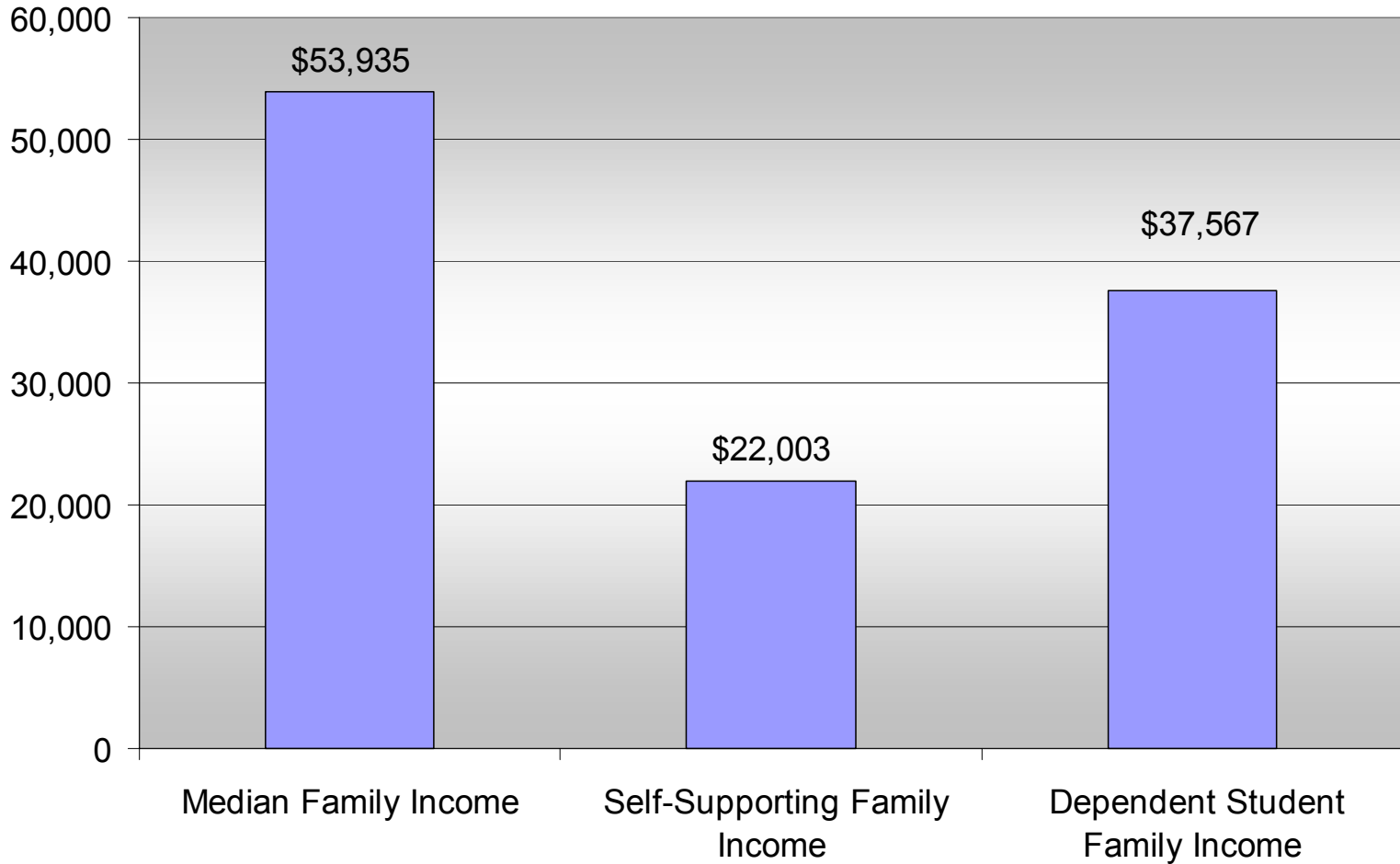
- Average 32 years of age
- 75% not married
- 78% female
- Average household size of 2.4 members
- Average FY 2000 income of \$22,003
- Received average of \$2,368 in financial aid

Financial Aid Recipients

Dependent Students

- Average age is 21
- 61% are female
- Average family size is 4 members
- Average FY2000 family income is \$37,567
- Received average of \$2,599 in financial aid

FY 2000 Family Income

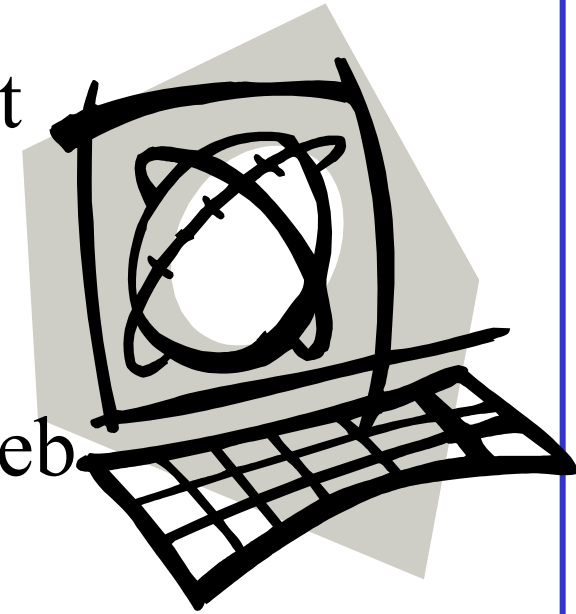


In the Current 2002-03 AY

- 22,750 applications for financial aid
- Projected disbursements of \$35,000,000
- \$50,453,403 in unmet financial need
- Federal government is source for 60% of projected aid
- Enhanced use of Financial Aid Web self-service features for students

FinAid Web

- 24/7 Internet access to the student financial aid system
- www.online.commnet.edu
- 1,000 + students using FinAid Web monthly
- 66% of FinAid applicants apply on the Web



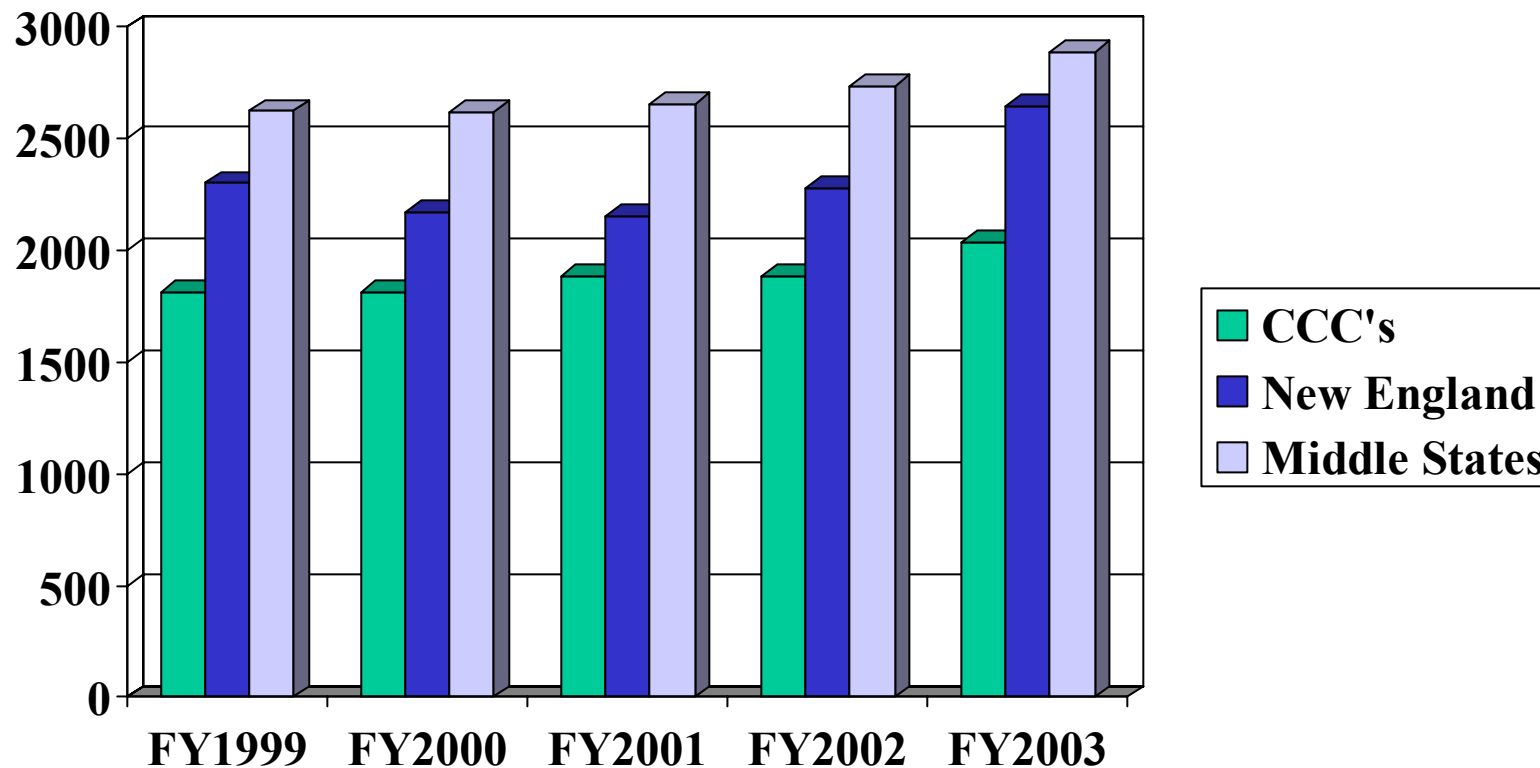
Tuition & Fee Review Process

- Financial analysis
 - Tuition or fee revenues
 - Related expenditures
 - Financial and budget conditions
 - Economic conditions and inflation
- Internal consultation
- BOT Budget & Facilities Committee
- Board of Trustees review & approval

Full-Time Tuition & Required Fees

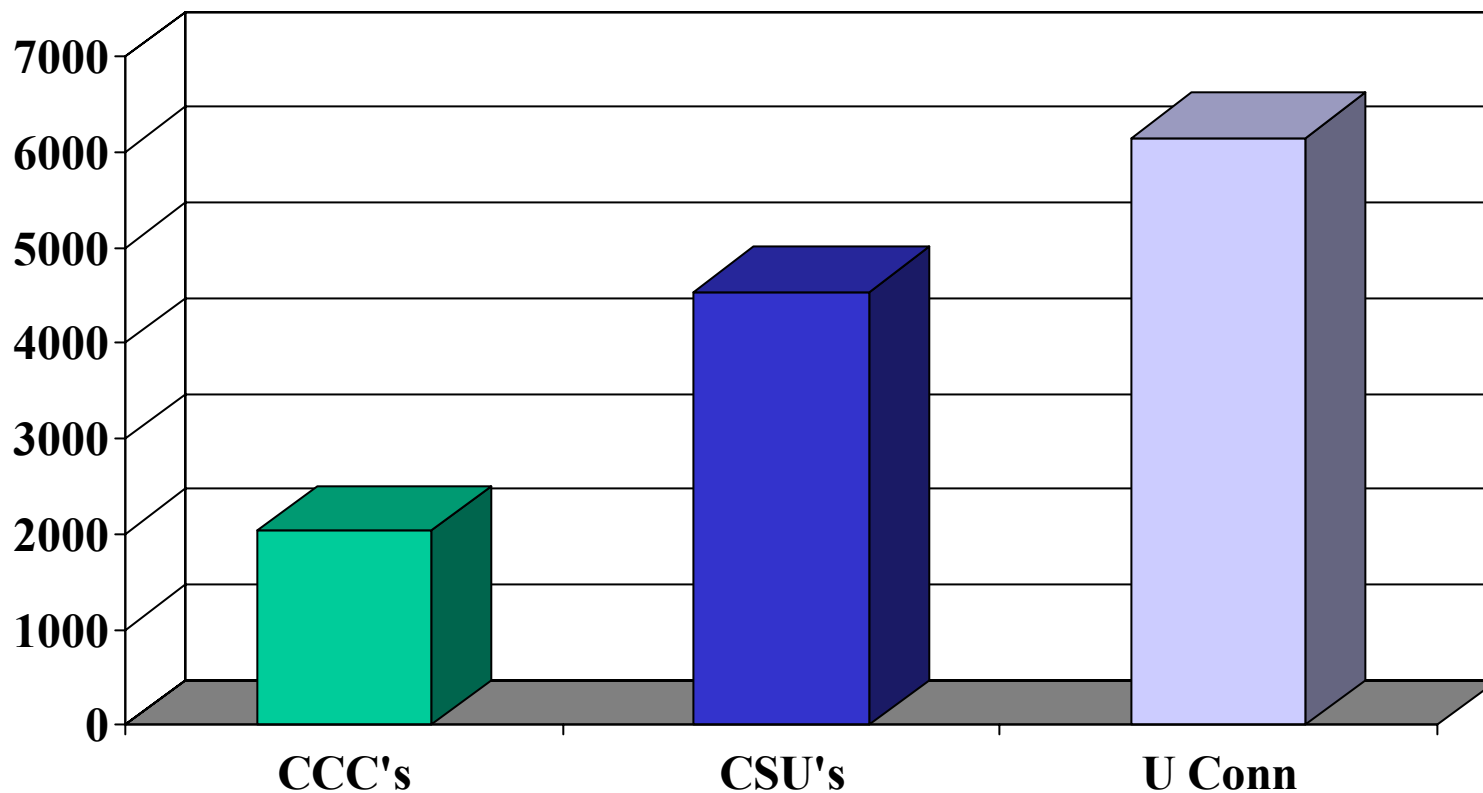
CCC's v. Regional Peers

(Source: College Board, Trends in College Pricing 2002 – Enrollment Weighted)



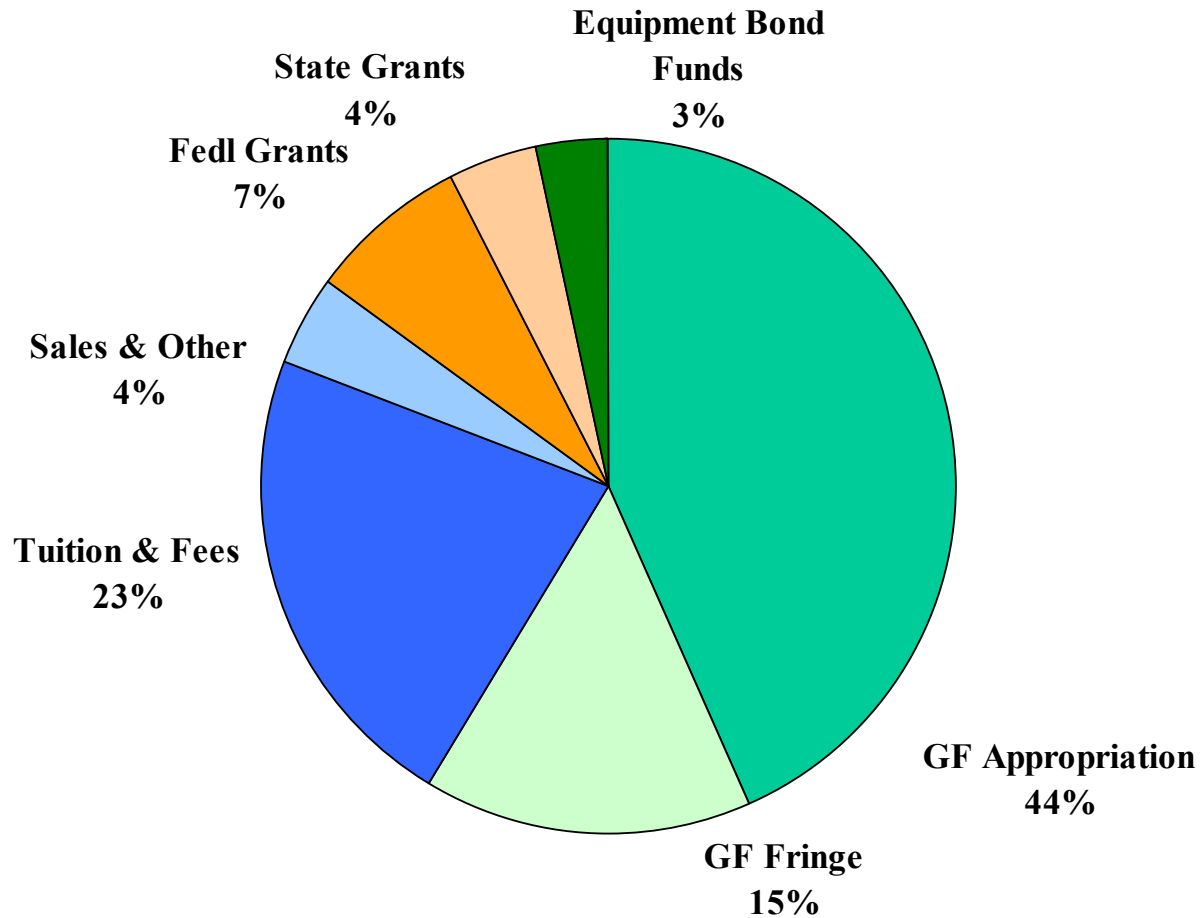
Full-Time Tuition & Required Fees

CT Public Higher Education – FY2003



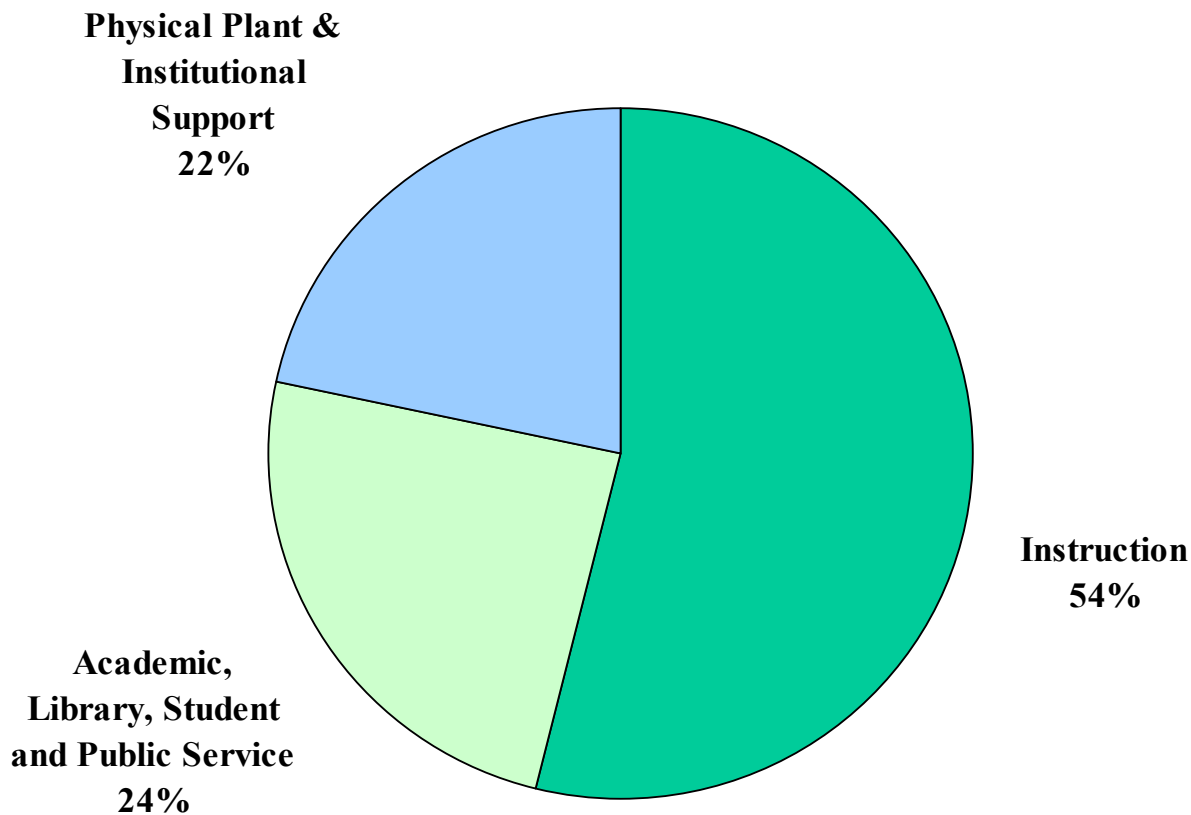
Revenue Sources

Current Operations – FY2002 - \$290 million
(Gross revenues)



Resource Allocation

FY2003 Budgeted Positions – 2,879.19 FTE
(General and Operating Funds)



Resource Allocation

- Academic efficiencies
 - Faculty assignment
 - Class size and scheduling
 - Program size and enrollments
- Maximize service through technology
 - Classroom technology
 - On-line service and administrative systems
- On-going budgetary constraint



2001 Report Card for Employment and Training Programs

Connecticut Employment and Training Commission
(March, 2002)

- **2,778** graduates from occupational programs
- **2,263** employed in Connecticut (**81%**)
- **2,141** retained 6 months later (**95%**)
- **\$220** average weekly wage increase
- **\$11,445** average annual wage increase
- **\$25,085,278** increase in total annual earnings

Management Focus

- Broad mission
- Philosophy and policy
 - Access and affordability
 - Low tuition rates
 - Significant financial aid
 - Student service and support
- Broad, recurring resource base
- Quality programs and technology

A Record of Accomplishments

- Board policies and philosophy that reflect community college needs
- Effective implementation and management of revenue, expense, access and service issues
- Soaring enrollments
- Student success
- Return on the state's investment