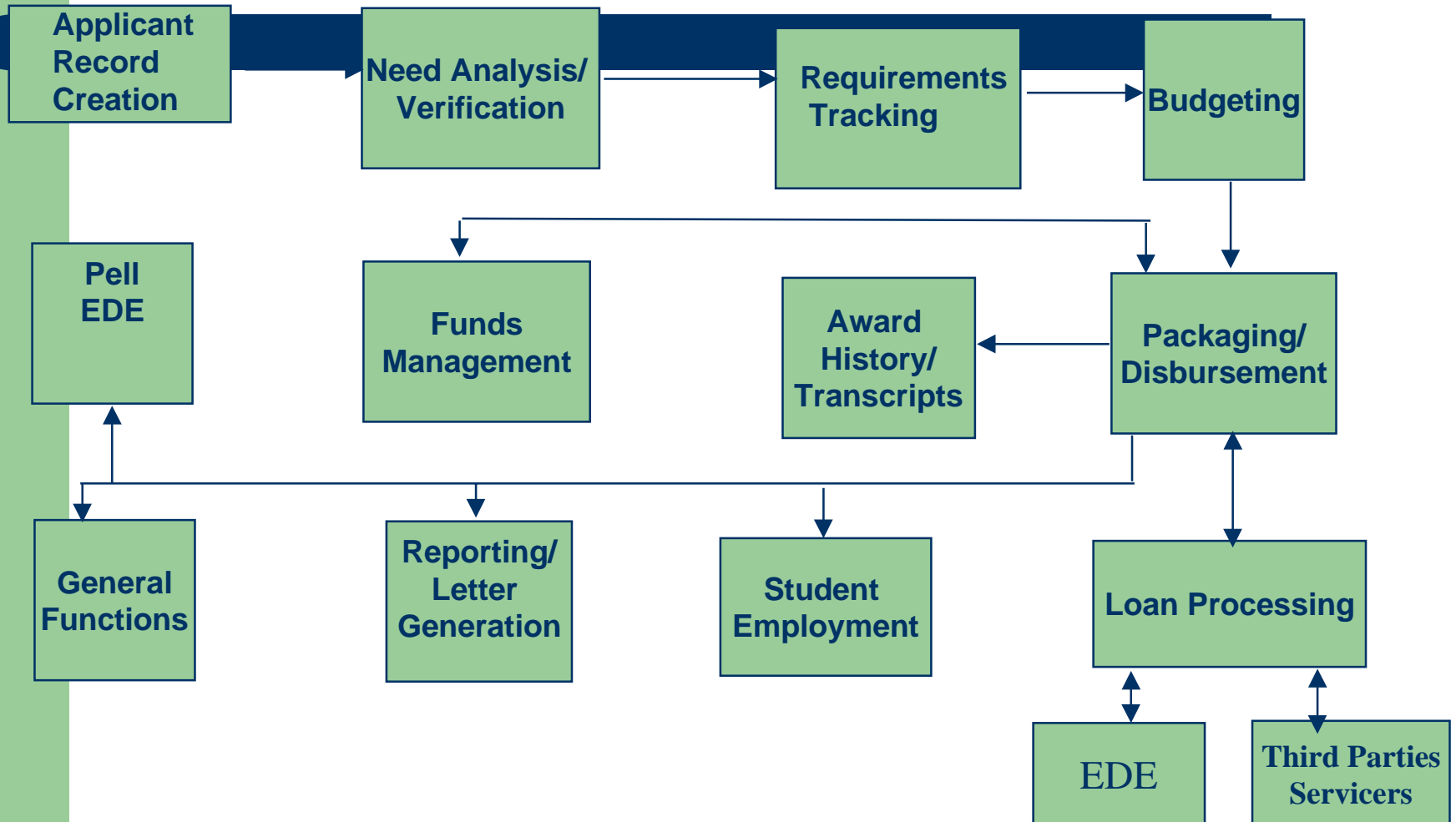


Funds Management

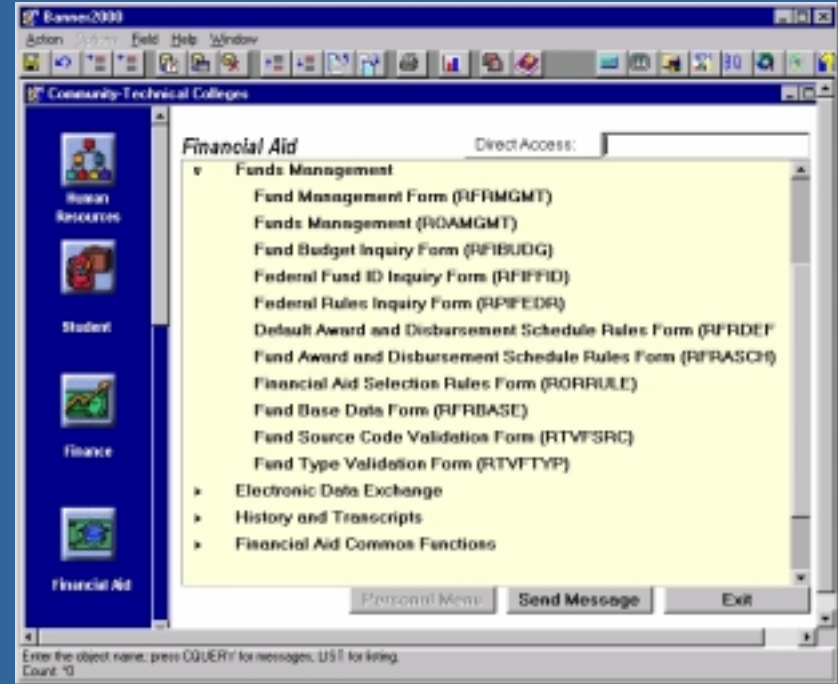


Banner 2000 Financial Aid System Overview



Funds Management

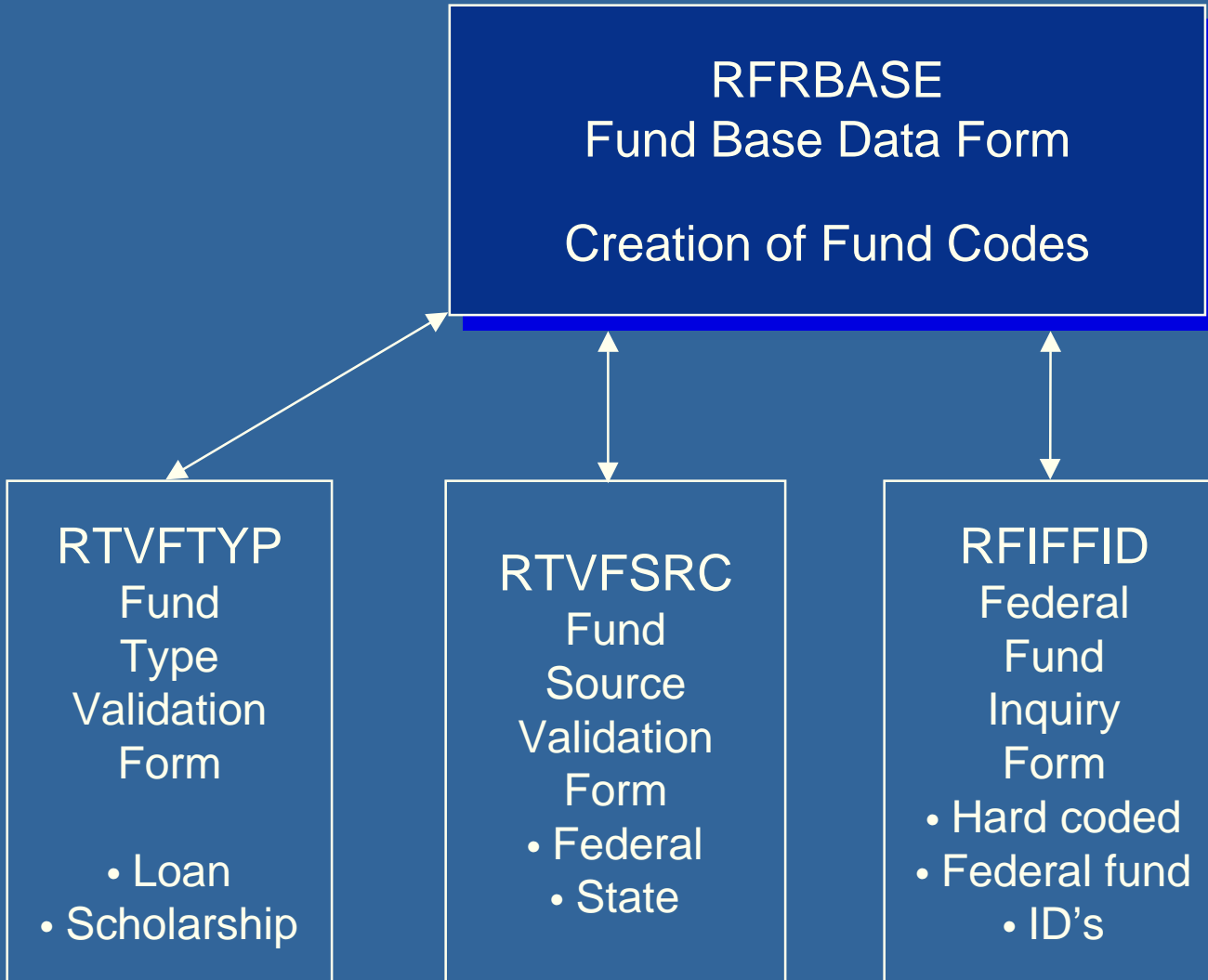
- On-line fund tracking
- Fund levels by year and term
- Over-commitment level
- Fund specific tracking requirements
- Automatic award letter messages



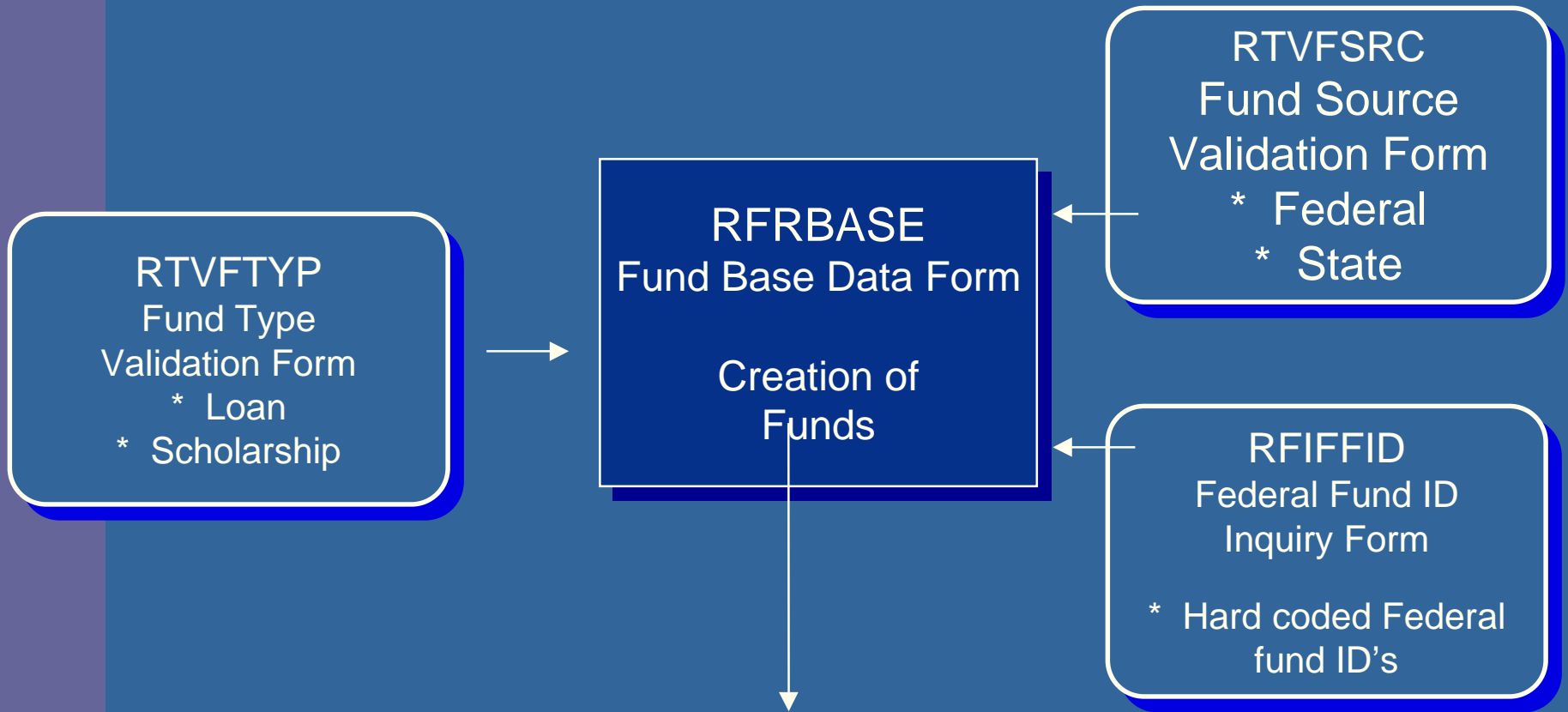
Funds Management Module - RFRBASE

- Establish fund codes
- Define the fund's basic characteristics
- Define the fund type
- Define the fund source
- Create account receivables (AR) detail codes
- Associate appropriate federal fund ID as required

Creation of Funds



Funds Management overview





Funds Management overview (cont)

RFRMGMT

Fund Management Form

* Year specific data defined for each fund

RORRULE

Disbursement & Awarding Rules Form
(Optional)

RFRDEFA

Default Award/Disbursement
Schedule Rules Form

RFRASCH

Award and Disbursement Schedule Rules Form
(Optional)

RFIBUDG Fund Budget Inquiry Form

* Monitor funds year / term activity

Define Aid Year Specific Fund Options - RFRMGMT

- Define fund allocations
- Define packaging options
- Define disbursement options
- Disbursement locks

Funds and budget components

- Apply budget components and percentages to a fund
- System will not award a fund in excess of percentage of the budget components indicated

Funds and detail codes

- Useful if the fund limits the amount disbursed to the student based on tuition, fees, etc.
- Specify the detail charge codes and percentages applied to the fund
- Pays an amount up to the sum of the detail codes for the term

Applicant requirement tracking and messages and fund association

- I identify the requirements associated with a fund
- Use Message Assignment block to identify messages to print on letters
 - Describe the requirements a student must satisfy for the fund



Funds Management overview (cont)

RFRMGMT

Fund Management Form

* Year specific data defined for each fund

RORRULE

Disbursement & Awarding Rules Form
(Optional)

RFRDEFA

Default Award/Disbursement
Schedule Rules Form

RFRASCH

Award and Disbursement Schedule Rules Form
(Optional)

RFIBUDG Fund Budget Inquiry Form

* Monitor funds year / term activity

Establish fund award and disbursement rules

- Create selection criteria for the awarding of a specific fund to students
- Create selection criteria for the disbursement of a specific fund to students



Funds Management overview (cont)

RFRMGMT

Fund Management Form

* Year specific data defined for each fund

RORRULE

Disbursement & Awarding Rules Form
(Optional)

RFRDEFA

Default Award/Disbursement
Schedule Rules Form

RFRASCH

Award and Disbursement Schedule Rules Form
(Optional)

RFIBUDG Fund Budget Inquiry Form

* Monitor funds year / term activity

Default award and disbursement schedule rules

- Define a standard award and disbursement schedule for each aid period
- Set up the memo expiration date
- Build fund specific award and disbursement schedule

Customized fund specific award and disbursement schedules

- Create award and disbursement schedules unique to the aid year, aid period, and fund
- These schedules used to award and disburse rather than (RFRDEFA) Default Award and Disbursement Schedule Rules Form

Funds Management (ROAMGMT)

- The Financial Aid Management Record Maintenance Form uses the basic segments of the Funds Management Module to provide us with a convenient means to create, update, and monitor financial aid fund activity.

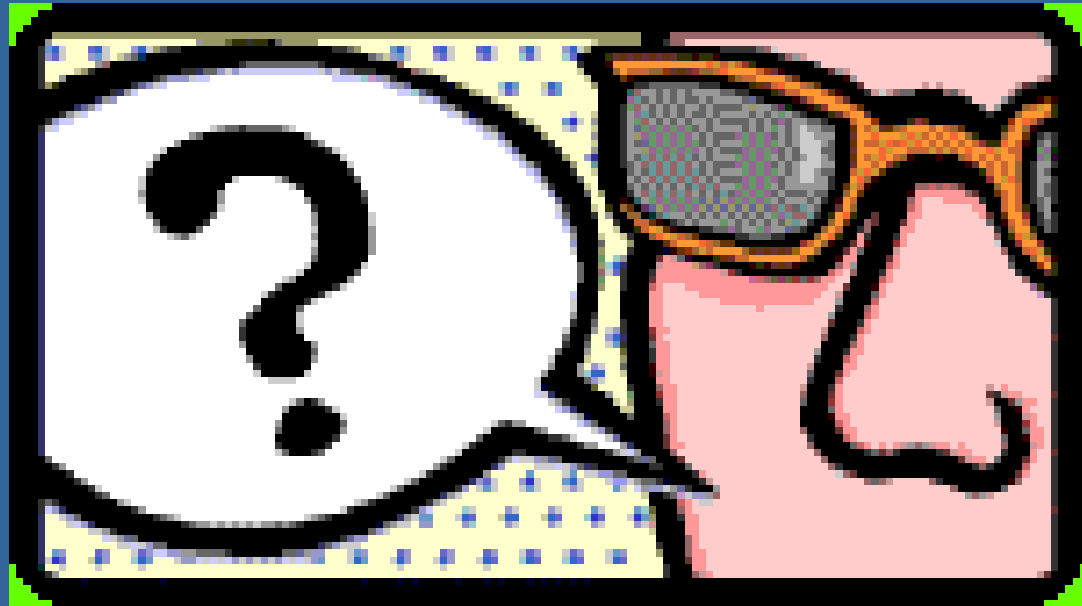
Monitor fund balances (RFI BUDG)

- Detailed information about awards made to all students from a specific fund for a particular year
- Displays amount of money currently available to award or pay
- View information on a yearly basis or term by term

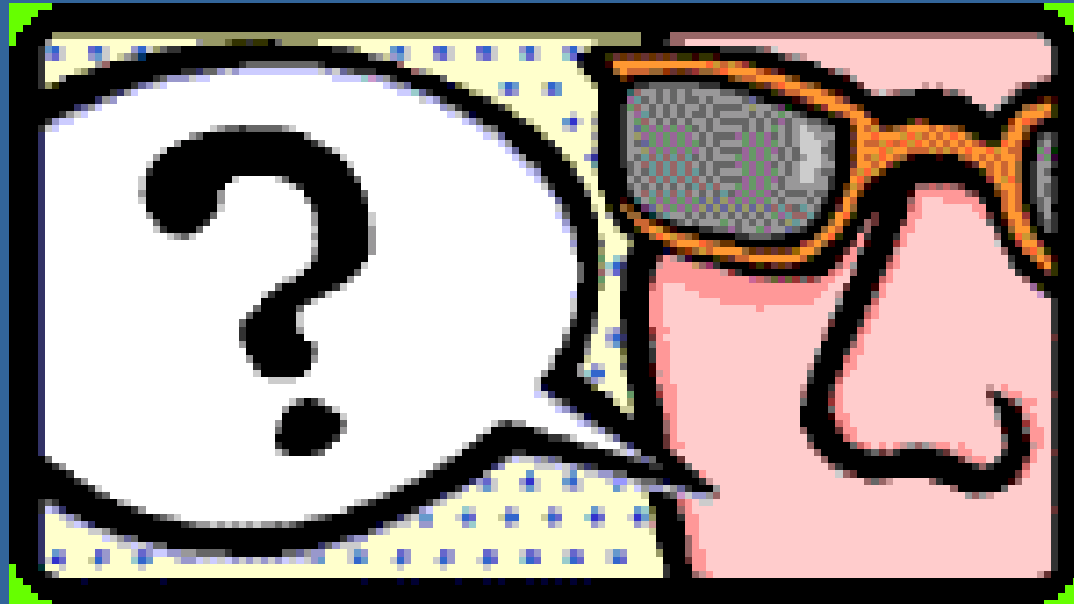
Understanding/ Reading this form

- For Packaging
 - In determining whether there is enough money remaining to make additional offers to students, the system adds together CURRENT OFFER + DECLINED + CANCELLED and compares it to AVAILABLE TO OFFER. Additional awards can be offered if :AVAILABLE TO OFFER - (CURRENT OFFERED + DECLINED + CANCELLED) > 0
- For Disbursement
 - In determining whether there is enough money remaining to pay students, the system adds MEMO'D + AUTHORIZED + PAID and compares it to TOTAL ALLOCATED. Additional payments can be made if: TOTAL ALLOCATED - (MEMO'D + AUTHORIZED + PAID) > amount paid

Questions, comments, discussion...



Questions, comments, discussion...



Fund Code	Description	AR Detail	Fund Src	Fund Type	Federal Fund ID	Print Order	Msg No
MCAPCS	CAPCS Community Service		STAT	WORK	GTIV	25	
MCAPGT	CT Public College Grant	MSCP	STAT	GRNT	GTIV	20	
MCAPMI	CT Public College Grant/M	MSCM	STAT	GRNT	GTIV	15	
MCAPWS	CAPCS Work-Study		STAT	WORK	GTIV	25	
MCCG	ACC Grant	MSIN	INST	GRNT	GTIV	10	
MCCWS	ACC Work-Study		INST	WORK	GTIV	10	
MFG	ACC Foundation Grant		PRIV	GRNT		10	
MFSEOG	Federal Supplemental Grant	MSFG	FDRL	GRNT	SEOG	40	
MFWS	Federal Work-Study		FDRL	WORK	CWS	41	
MFW/SCS	Fw/S Community Service		FDRL	WORK	CWS	42	
MPELL	Federal Pell Grant	MSPL	FDRL	GRNT	PELL	35	
MPERK	Federal Perkins Loan	MLPN	FDRL	LOAN	PERK	50	
MPG	ACC Private Grant		PRIV	GRNT		10	
MPLUS	Federal Parent Loan (PLUS)	MLPP	FDRL	LOAN	PLUS	100	

Select

Rollback

Save

Exit

Fund Code	Description	AR Detail	Fund Src	Fund Type	Federal Fund ID	Print Order	Msg No
MCCWS	ACC Work-Study		INST	WORK	GTIV	10	
MFG	ACC Foundation Grant		PRIV	GRNT		10	
MFSEOG	Federal Supplemental Grant	MSFG	FDRL	GRNT	SEOG	40	
MFWS	Federal Work-Study		FDRL	WORK	CWS	41	
MFWSCS	FWS Community Service		FDRL	WORK	CWS	42	
MPELL	Federal Pell Grant	MSPL	FDRL	GRNT	PELL	35	
MPERK	Federal Perkins Loan	MLPN	FDRL	LOAN	PERK	50	
MPG	ACC Private Grant		PRIV	GRNT		10	
MPLUS	Federal Parent Loan (PLUS)	MLPP	FDRL	LOAN	PLUS	100	
MPRG1	ACC Private Restricted Grant 1		PRIV	SCHL		10	
MPRG2	ACC Private Restricted Grant 2		PRIV	SCHL		10	
MPRG3	Dan Zaneski Book Fund	MDZF	PRIV	GRNT		10	
MSUB	Federal Stafford Loan (Sub)	MLSS	FDRL	LOAN	STFD	55	
MUNSUB	Federal Stafford Loan (Unsub)	MLSU	FDRL	LOAN	STFD	60	

Select

Rollback

Save

Exit