

Transfer Student Monitoring Process

Phase I – January 2002 **Financial Aid Services**

Connecticut
Community
Colleges



Education That Works For a Lifetime

Agenda

- **Introduction**
- **Phase I/NSC Upload Process**
- **Phase I/NSC Response File**
- **Phase I/NSC Response Report & Upload to Banner**
- **A Look Ahead At Phase II**
- **Questions**

Connecticut
Community
Colleges



Education That Works For a Lifetime

Introduction

- **Federal regulations (34 CFR 668.19) effective July 1, 2001 no longer require schools to obtain a paper Financial Aid Transcript (FAT) or respond to another school's request for an FAT**
- **Schools must now obtain financial aid history information for midyear transfer students using the NSLDS Transfer Student Monitoring Process (GEN-01-09)**

Connecticut
Community
Colleges



Education That Works For a Lifetime

Phase I

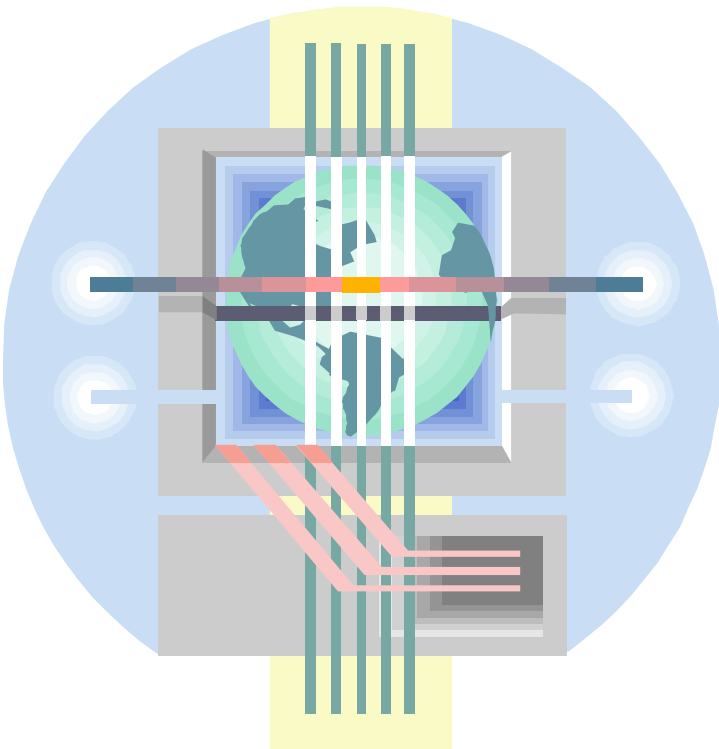
- **Phase I of the Transfer Student Monitoring Process involves the use of the National Student Clearinghouse (NSC) to identify potential midyear transfer students**
- **Colleges can then report these potential students for NSLDS Transfer Monitoring on the NSLDS web site at www.nslidsfap.ed.gov.**

Connecticut
Community
Colleges



Education That Works For a Lifetime

Phase I/Part 1: The NSC Upload Process



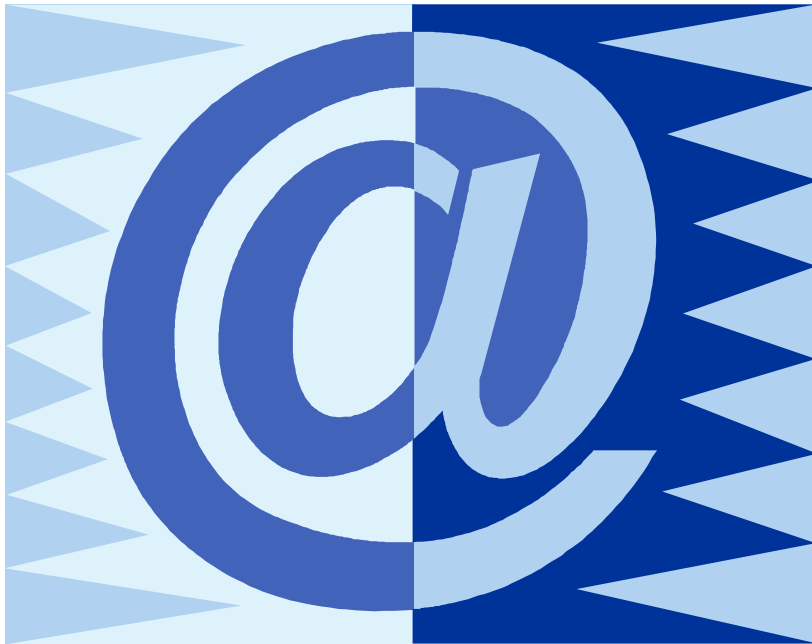
- **The NSC Upload Process (RWPXN01) selects all students with a RORSTAT record for the chosen Award Year**
- **RWPXN01 then creates an electronic file and automatically sends the file to NSC**

Connecticut
Community
Colleges



Education That Works For a Lifetime

Phase I/Part 1: The NSC Upload Process



- **RWPXN01 will also send a confirmation e-mail to the college director of financial aid**
- **Maintain your e-mail address on ROAINST!**

Connecticut
Community
Colleges



Education That Works For a Lifetime

Phase I/Part 2: The NSC Response File

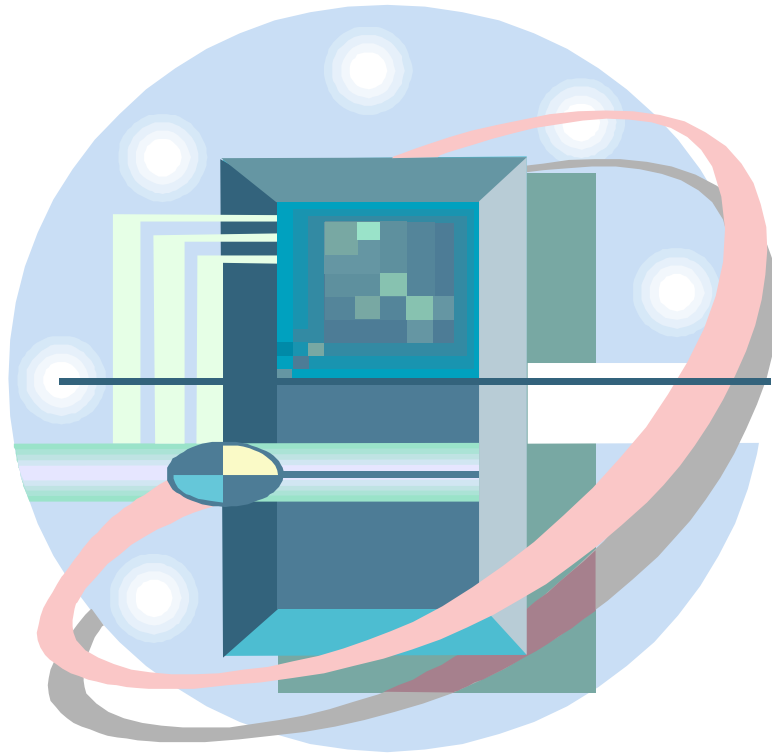
- **In processing your request for prior college attendance data, the NSC searches its databases and seeks to determine if a student has attended any other school since July 1 of the award year**
- **If any students meet the criteria, NSC creates a response file for your college**
- **Allow 2-4 business days for your search request to be processed**

Connecticut
Community
Colleges



Education That Works For a Lifetime

Phase I/Part 2: The NSC Response File



- **RWPXN02 runs automatically each evening and searches the NSC system for your college's response file**
- **If found, the response file is uploaded to our computer system and an e-mail conformation is sent to you**

Connecticut
Community
Colleges

Phase I/Part 3: NSC Response Report



- **RWPXN02 automatically prepares and formats a report for you. The NSC Report of Potential Midyear Transfer Students is placed in your reports folder.**
- **Use this report to identify those students to submit to NSLDS.**

Connecticut
Community
Colleges



Education That Works For a Lifetime

Phase I/Part4: NSC Upload to Banner

The screenshot shows a web browser window titled "Banner/TRNG - Connecticut Community College System - Microsoft Internet Explorer". The address bar shows "Prior College Inquiry Form RSIPCOL 5.0 (TRNG) [G_FATEAM]". The form contains the following information:

ID:	Monique Nicole Jones
College Code:	011150 Asnuntuck Community College
Address:	170 Elm Street
City:	Enfield
State:	CT Connecticut
Zip:	06082
Country:	
Level:	
Attend Period:	
Attend From:	
Attend To:	
Degree Code:	

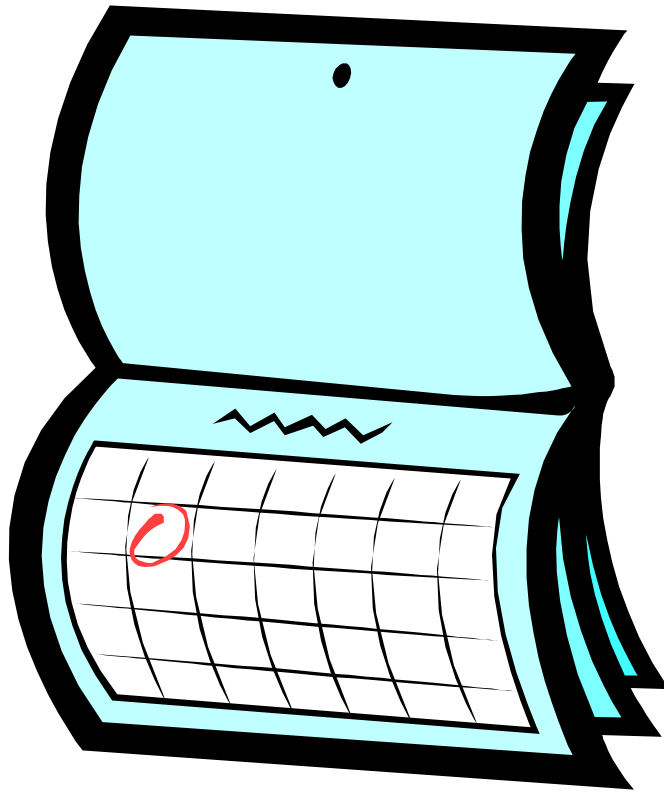
- **Future enhancement!**
- **RWPXN02 will also upload the data to the Banner database**
- **Use RSIPCOL, Prior College Inquiry Form**

Connecticut
Community
Colleges



Education That Works For a Lifetime

Phase II: Automatic Exchanges of Data with the National Student Loan Data System (NSLDS)



- Coming in the Spring of 2002.....

Connecticut
Community
Colleges



Education That Works For a Lifetime

Questions.....



Connecticut
Community
Colleges



Education That Works For a Lifetime