



*Education That Works For a Lifetime*

## **Fall 2002 Enrollment Report**

~~~~~  
Dr. Corby A. Coperthwaite, Mr. Dennis G. Jones & Ms. Tobi Krutt  
Office of Planning, Research and Assessment  
Board of Trustees  
Connecticut Community-Technical Colleges  
61 Woodland Street  
Hartford, Connecticut 06105

Phone: (860)725-6604  
Fax: (860)566-1308  
CCoperthwaite@commnet.edu

~~~~~

## Contents

Fall 2002 Credit Enrollment Executive Summary	2
Headcount and FTE Enrollment History	3
Combined Fund FTE Enrollment – Fall 2001 & Fall 2002	4
General Fund FTE Enrollment – Fall 2001 & Fall 2002	5
Combined Fund Enrollment – Full-time/Part-time	6
General Fund Enrollment – Full-time/Part-time	7
Extension Fund Enrollment – Full-time/Part-time	8
Combined Fund Student Enrollment History	9
Combined Fund FTE Enrollment History	10
Combined Fund Enrollment by Ethnic Group	11
Enrollment History by Ethnicity	12
Combined Fund Enrollment by Gender	13
Enrollment History by Gender	14
Combined Fund Age Distribution	15
Enrollment History by Age	17
Credit Enrollment by Program Area	18
Enrollment by Program Area and Ethnicity	21
Enrollment by Program Area and Gender	22
Enrollment History by Program Area	23
Geographic Distribution	24
Undergraduates at Public Institutions	25
Non-Credit Enrollment	26

## **Executive Summary**

### ***Credit Enrollment***

This fall there are 44,869 students enrolled in Connecticut community colleges. This represents a 5.2% increase over Fall 2001. Enrollment is at its highest level since 1993 when it peaked at 45,542. This fall is also a record-breaking semester with respect to FTE. Our colleges are serving 23,485 Full-time Equivalent Students, which is the largest number ever. As compared to Fall 2001, General Fund headcount enrollment has increased by 5.8% and General Fund FTE enrollment has increased by 9.4%.

In the Fall 2002 semester, 69.4% of all community college students are part-time, and 30.6% of the students are full-time. Although the numbers of full-time and part-time students have both been increasing over the last five years, as a percent of total enrollment, full-time attendance has increased by 6.1% since Fall 1998. From 1998 to 2001, part-time students generated more FTE than full-time students. This fall the reverse is true. Full-time students account for 51.4% of the total FTE generated.

This fall minority enrollments represent 29.9% of the student body (26.4% are Black and Hispanic). This represents a 5.5% increase in minority enrollment since 1998. The system's gender composition has remained relatively consistent over the past five years. This fall 61.7% of the student body is female and 38.3% are male.

The average age of the student population is 29 – 22 for full-time students and 32 for part-timers. Full-time enrollment is increasing and these are generally the more "traditional age" college students; 69.6% of them are under the age of 22. Overall 36.3% of our students are under the age of 22. This represents a 5% increase since 1998 and the largest proportion of our student body this Fall.

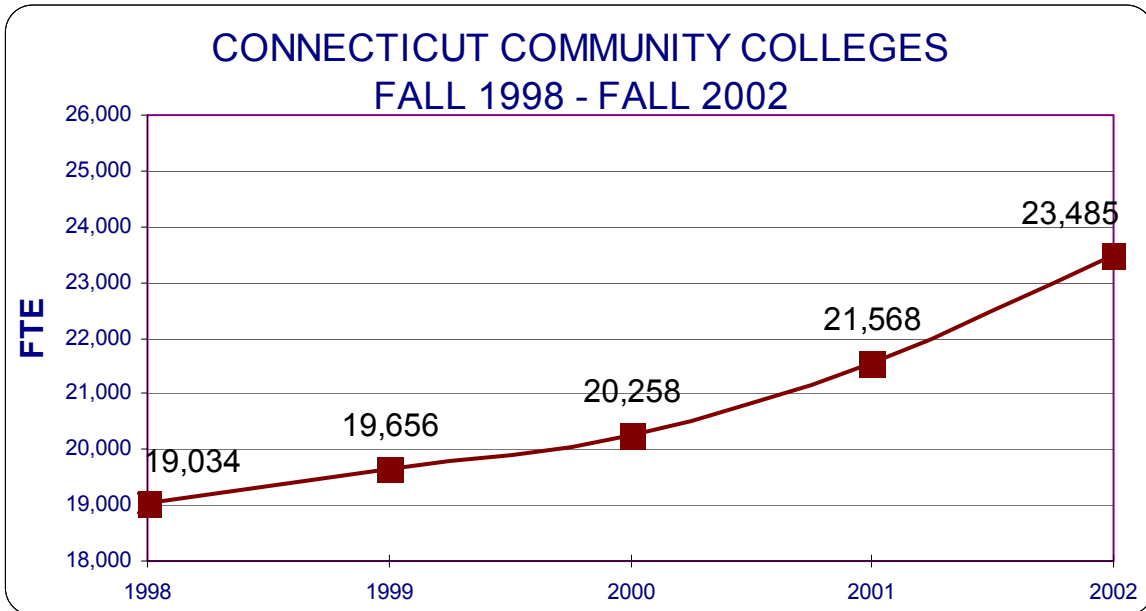
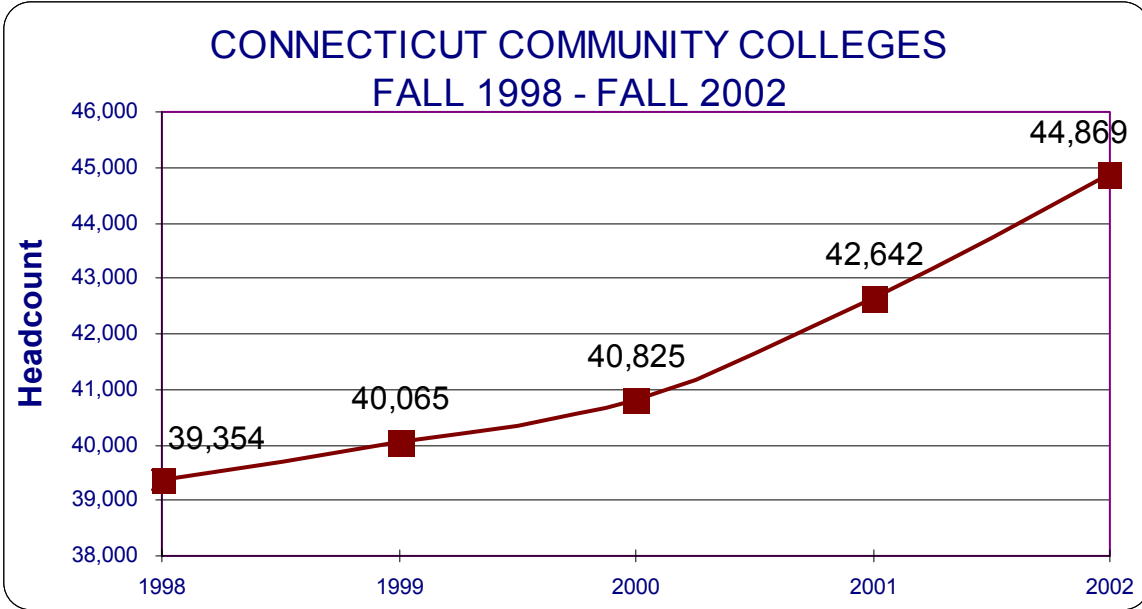
In the Fall of 2002, 42.3% of all community college students are enrolled in occupational programs. Liberal Arts and Sciences and General Studies programs account for an additional 30.4% of all community college students, and the remaining 27.3% of the students are not enrolled in a specific degree or certificate program. Over the last three years, among specific programs, Liberal Arts and General Studies have seen the largest growth; up 3% since Fall 2000.

Our credit students come from all over the state of Connecticut and represent 48.9% of the total undergraduate student enrollment in public higher education.

### ***Non-Credit Enrollment***

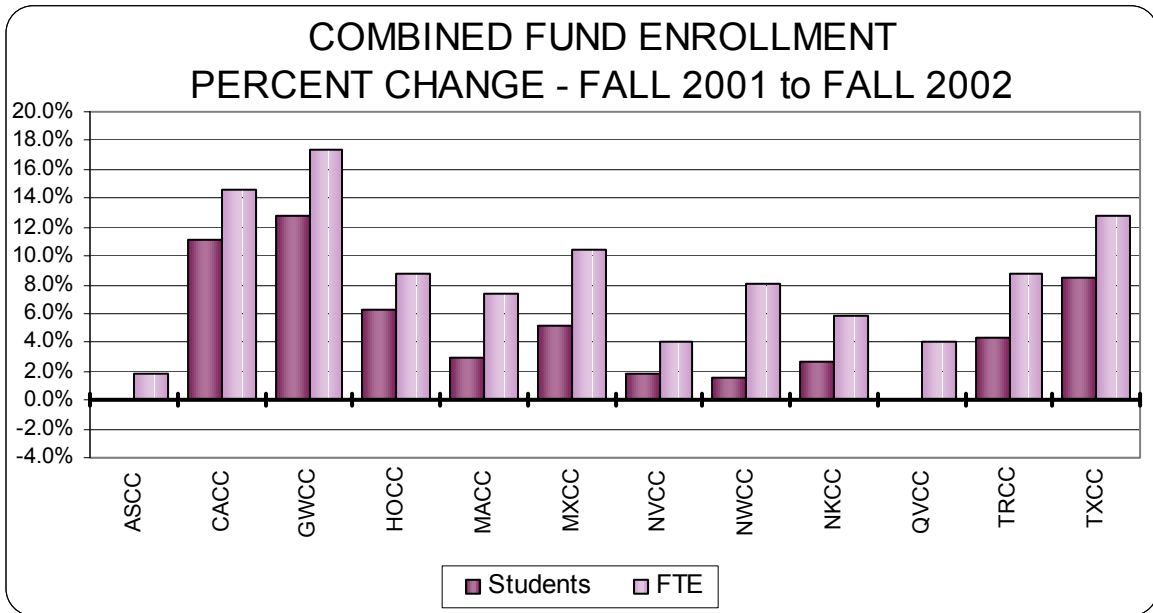
Non-credit enrollment represents a substantial number of people, businesses and industries that are served by Connecticut's community colleges. Throughout the academic year 2001-2002, 45,594 students enrolled in non-credit offerings. Some students enrolled in more than one offering so there were 69,016 non-credit registrations in total; 39,224 (57%) in workforce development related activities and 29,792 (43%) in personal enrichment activities.

# Credit Enrollment



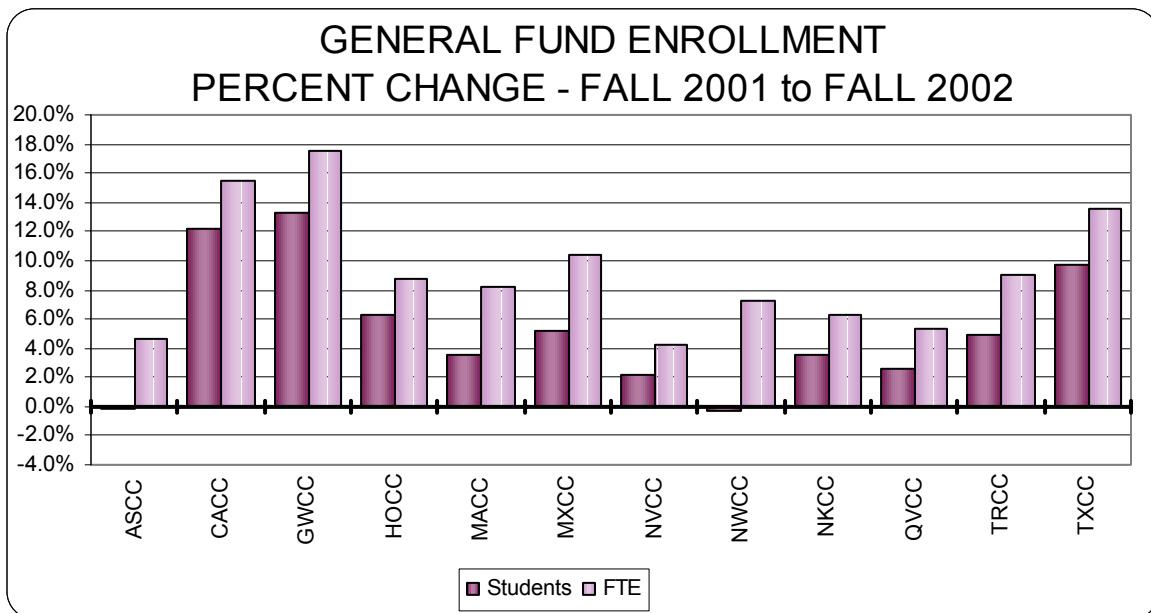
CONNECTICUT COMMUNITY COLLEGES  
COMBINED FUND ENROLLMENT  
FALL 2001 & FALL 2002

	<u>FALL 2001</u>		<u>FALL 2002</u>		<u>PERCENT CHANGE</u>	
	STUDENTS	FTE	STUDENTS	FTE	STUDENTS	FTE
Asnuntuck CC	1,723	785	1,724	800	0.1%	1.8%
Capital CC	3,129	1,532	3,476	1,756	11.1%	14.6%
Gateway CC	4,724	2,343	5,328	2,748	12.8%	17.3%
Housatonic CC	4,247	2,123	4,515	2,309	6.3%	8.8%
Manchester CC	5,405	2,914	5,561	3,127	2.9%	7.3%
Middlesex CC	2,320	1,118	2,440	1,235	5.2%	10.5%
Naugatuck Valley CC	5,223	2,822	5,315	2,938	1.8%	4.1%
Northwestern Ct. CC	1,609	722	1,633	781	1.5%	8.1%
Norwalk CC	5,569	2,921	5,717	3,092	2.7%	5.8%
Quinebaug Valley CC	1,501	762	1,501	794	0.0%	4.1%
Three Rivers CC	3,472	1,742	3,624	1,895	4.4%	8.8%
Tunxis CC	3,720	1,783	4,035	2,011	8.5%	12.8%
<b>SYSTEM TOTAL</b>	<b>42,642</b>	<b>21,568</b>	<b>44,869</b>	<b>23,485</b>	<b>5.2%</b>	<b>8.9%</b>



CONNECTICUT COMMUNITY COLLEGES  
GENERAL FUND ENROLLMENT  
FALL 2001 & FALL 2002

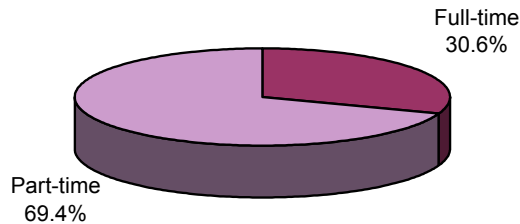
	<u>FALL 2001</u>		<u>FALL 2002</u>		<u>PERCENT CHANGE</u>	
	STUDENTS	FTE	STUDENTS	FTE	STUDENTS	FTE
Asnuntuck CC	1,445	695	1,442	727	-0.2%	4.6%
Capital CC	3,099	1,520	3,476	1,756	12.2%	15.5%
Gateway CC	4,703	2,338	5,328	2,748	13.3%	17.5%
Housatonic CC	4247	2,123	4,515	2,309	6.3%	8.8%
Manchester CC	5,354	2,874	5,546	3,110	3.6%	8.2%
Middlesex CC	2,320	1,118	2,440	1,235	5.2%	10.5%
Naugatuck Valley CC	5,191	2,813	5,301	2,933	2.1%	4.3%
Northwestern Ct. CC	1,602	717	1,597	769	-0.3%	7.3%
Norwalk CC	5,521	2,911	5,717	3,092	3.6%	6.2%
Quinebaug Valley CC	1,455	752	1,492	792	2.5%	5.3%
Three Rivers CC	3,427	1,730	3,597	1,886	5.0%	9.0%
Tunxis CC	3,622	1,757	3,976	1,994	9.8%	13.5%
<b>SYSTEM TOTAL</b>	<b>41,986</b>	<b>21,348</b>	<b>44,427</b>	<b>23,350</b>	<b>5.8%</b>	<b>9.4%</b>



CONNECTICUT COMMUNITY COLLEGES  
 COMBINED FUND ENROLLMENT  
 FULL-TIME/PART-TIME  
 FALL 2002

	<u>FULL-TIME</u>		<u>PART-TIME</u>		<u>TOTAL</u>		<u>PERCENT</u>	
	STUDENTS	FTE	STUDENTS	FTE	STUDENTS	FTE	Full-time	Part-time
Asnuntuck CC	434	393	1,290	407	1,724	800	25.2%	74.8%
Capital CC	793	690	2,683	1,066	3,476	1,756	22.8%	77.2%
Gateway CC	1,522	1,335	3,806	1,414	5,328	2,748	28.6%	71.4%
Housatonic CC	1,215	1,046	3,300	1,263	4,515	2,309	26.9%	73.1%
Manchester CC	2,117	1,855	3,444	1,272	5,561	3,127	38.1%	61.9%
Middlesex CC	704	607	1,736	628	2,440	1,235	28.9%	71.1%
Naugatuck Valley CC	1,904	1,683	3,411	1,255	5,315	2,938	35.8%	64.2%
Northwestern Ct. CC	478	424	1,155	357	1,633	781	29.3%	70.7%
Norwalk CC	1,802	1,638	3,915	1,454	5,717	3,092	31.5%	68.5%
Quinebaug Valley CC	487	422	1,014	371	1,501	794	32.4%	67.6%
Three Rivers CC	1,014	910	2,610	985	3,624	1,895	28.0%	72.0%
Tunxis CC	1,245	1,060	2,790	951	4,035	2,011	30.9%	69.1%
<b>SYSTEM TOTAL</b>	<b>13,715</b>	<b>12,063</b>	<b>31,154</b>	<b>11,422</b>	<b>44,869</b>	<b>23,485</b>	<b>30.6%</b>	<b>69.4%</b>

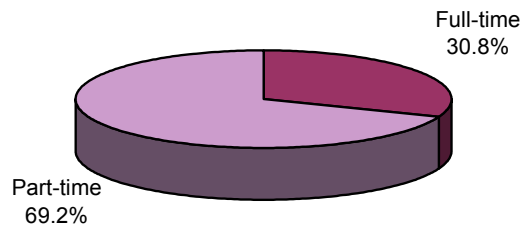
FULL-TIME/PART-TIME  
 FALL 2002 COMBINED FUND ENROLLMENT



CONNECTICUT COMMUNITY COLLEGES  
GENERAL FUND ENROLLMENT  
FULL-TIME/PART-TIME  
FALL 2002

	<u>FULL-TIME</u>		<u>PART-TIME</u>		<u>TOTAL</u>		<u>PERCENT</u>	
	STUDENTS	FTE	STUDENTS	FTE	STUDENTS	FTE	Full-time	Part-time
Asnuntuck CC	426	386	1,016	341	1,442	727	29.5%	70.5%
Capital CC	793	690	2,683	1,066	3,476	1,756	22.8%	77.2%
Gateway CC	1,522	1,335	3,806	1,414	5,328	2,748	28.6%	71.4%
Housatonic CC	1,215	1,046	3,300	1,263	4,515	2,309	26.9%	73.1%
Manchester CC	2,096	1,836	3,450	1,273	5,546	3,110	37.8%	62.2%
Middlesex CC	704	607	1,736	628	2,440	1,235	28.9%	71.1%
Naugatuck Valley CC	1,904	1,683	3,397	1,250	5,301	2,933	35.9%	64.1%
Northwestern Ct. CC	474	420	1,123	349	1,597	769	29.7%	70.3%
Norwalk CC	1,802	1,638	3,915	1,454	5,717	3,092	31.5%	68.5%
Quinebaug Valley CC	487	422	1,005	369	1,492	792	32.6%	67.4%
Three Rivers CC	1,014	910	2,583	976	3,597	1,886	28.2%	71.8%
Tunxis CC	1,240	1,056	2,736	938	3,976	1,994	31.2%	68.8%
<b>SYSTEM TOTAL</b>	<b>13,677</b>	<b>12,030</b>	<b>30,750</b>	<b>11,321</b>	<b>44,427</b>	<b>23,350</b>	<b>30.8%</b>	<b>69.2%</b>

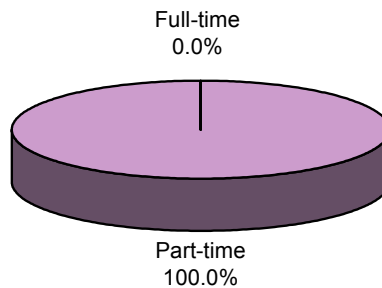
FULL-TIME/PART-TIME  
FALL 2002 GENERAL FUND ENROLLMENT



CONNECTICUT COMMUNITY COLLEGES  
EXTENSION FUND ENROLLMENT  
FULL-TIME/PART-TIME  
FALL 2002

	<u>FULL-TIME</u>		<u>PART-TIME</u>		<u>TOTAL</u>		<u>PERCENT</u>	
	STUDENTS	FTE	STUDENTS	FTE	STUDENTS	FTE	Full-time	Part-time
Asnuntuck CC	0	0	300	73	300	73	0.0%	100.0%
Capital CC	0	0	0	0	0	0		
Gateway CC	0	0	0	0	0	0		
Housatonic CC	0	0	0	0	0	0		
Manchester CC	0	0	80	17	80	17	0.0%	100.0%
Middlesex CC	0	0	0	0	0	0		
Naugatuck Valley CC	0	0	14	5	14	5	0.0%	100.0%
Northwestern Ct. CC	0	0	52	12	52	12	0.0%	100.0%
Norwalk CC	0	0	0	0	0	0		
Quinebaug Valley CC	0	0	9	2	9	2	0.0%	100.0%
Three Rivers CC	0	0	27	9	27	9	0.0%	100.0%
Tunxis CC	0	0	67	17	67	17	0.0%	100.0%
<b>SYSTEM TOTAL</b>	<b>0</b>	<b>0</b>	<b>549</b>	<b>134</b>	<b>549</b>	<b>134</b>	<b>0.0%</b>	<b>100.0%</b>

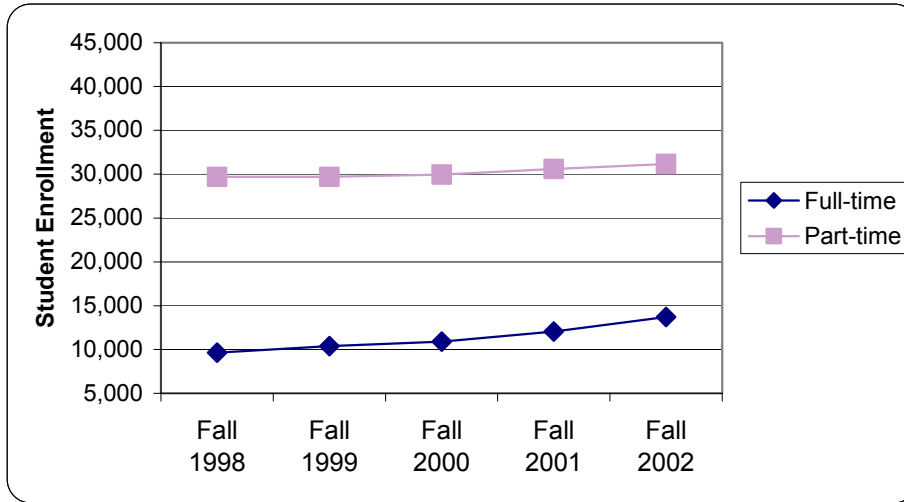
FULL-TIME/PART-TIME  
FALL 2002 EXTENSION FUND ENROLLMENT



CONNECTICUT COMMUNITY COLLEGES  
 COMBINED FUND STUDENT ENROLLMENT HISTORY  
 FALL 1998 - FALL 2002

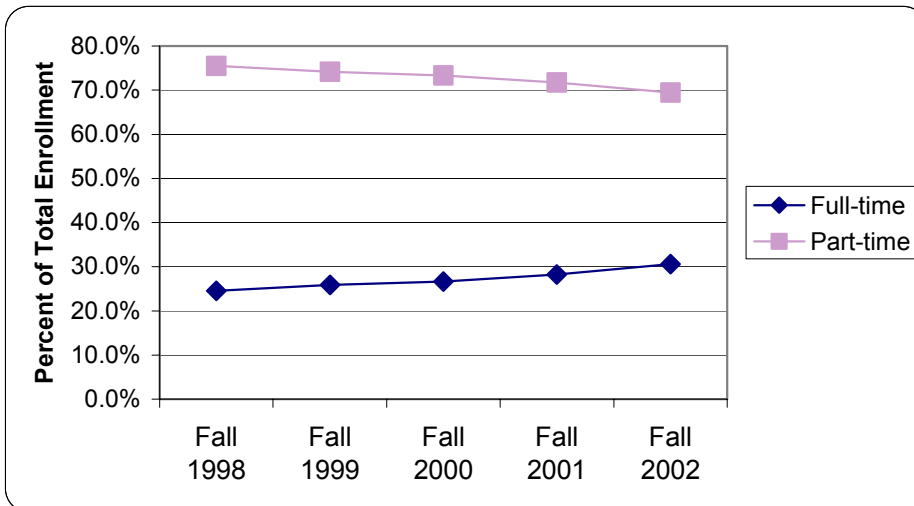
**Student Enrollment**

	Fall 1998	Fall 1999	Fall 2000	Fall 2001	Fall 2002
Full-time	9,655	10,369	10,887	12,044	13,715
Part-time	29,699	29,696	29,938	30,598	31,154
Total	39,354	40,065	40,825	42,642	44,869



**Percent of Total Enrollment**

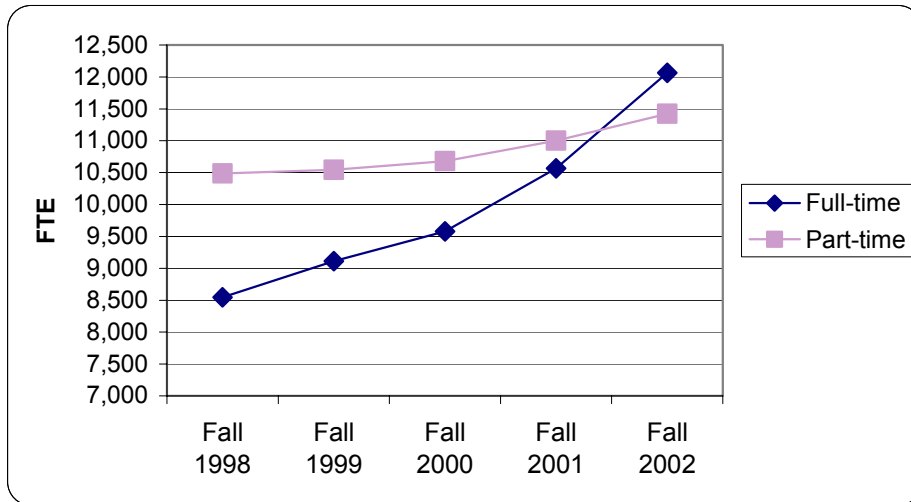
	Fall 1998	Fall 1999	Fall 2000	Fall 2001	Fall 2002
Full-time	24.5%	25.9%	26.7%	28.2%	30.6%
Part-time	75.5%	74.1%	73.3%	71.8%	69.4%
Total	100.0%	100.0%	100.0%	100.0%	100.0%



CONNECTICUT COMMUNITY COLLEGES  
COMBINED FUND FTE ENROLLMENT HISTORY  
FALL 1998 - FALL 2002

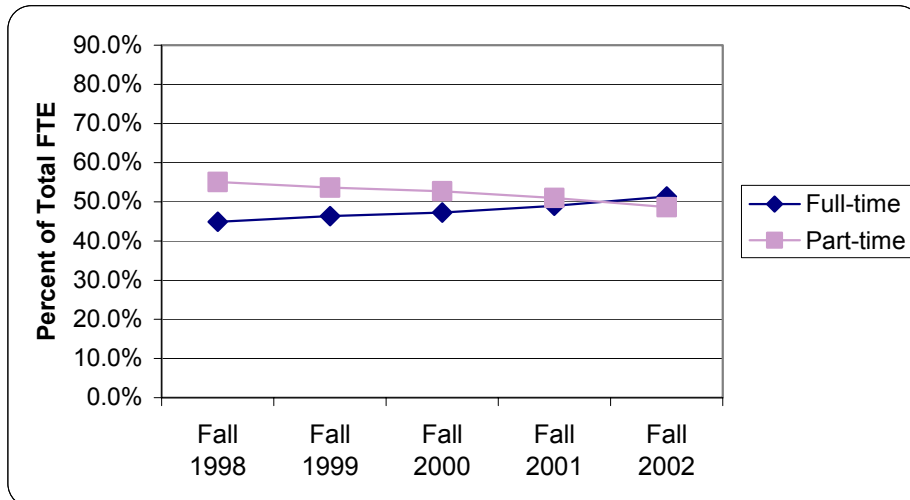
**FTE Enrollment**

	Fall 1998	Fall 1999	Fall 2000	Fall 2001	Fall 2002
Full-time	8,547	9,112	9,577	10,568	12,063
Part-time	10,488	10,544	10,680	11,000	11,422
Total	19,035	19,656	20,257	21,568	23,485



**Percent of Total FTE**

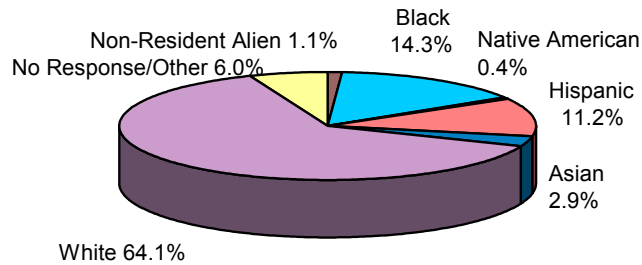
	Fall 1998	Fall 1999	Fall 2000	Fall 2001	Fall 2002
Full-time	44.9%	46.4%	47.3%	49.0%	51.4%
Part-time	55.1%	53.6%	52.7%	51.0%	48.6%
Total	100.0%	100.0%	100.0%	100.0%	100.0%



CONNECTICUT COMMUNITY COLLEGES  
COMBINED FUND ENROLLMENT BY ETHNIC GROUP  
FALL 2002

	NON-RESIDENT ALIEN	BLACK NON-HISPANIC	AMERICAN INDIAN OR ALASKAN NATIVE	ASIAN OR PACIFIC ISLANDER	HISPANIC	WHITE NON-HISPANIC	UNKNOWN
Asnuntuck CC	0	166	5	33	68	1,421	31
Capital CC	13	1,245	8	137	825	961	287
Gateway CC	60	1,247	23	157	653	2,856	332
Housatonic CC	65	1,241	6	137	916	1,897	253
Manchester CC	3	677	23	223	488	3,860	287
Middlesex CC	12	170	10	57	169	1,915	107
Naugatuck Valley CC	59	392	22	114	472	3,684	572
Northwestern Ct. CC	4	35	2	26	53	1,437	76
Norwalk CC	272	1,012	8	268	918	2,888	351
Quinebaug Valley CC	5	19	10	22	103	1,266	76
Three Rivers CC	15	252	68	87	178	2,798	226
Tunxis CC	35	221	20	114	314	3,141	190
<b>SYSTEM TOTAL</b>	<b>543</b>	<b>6,677</b>	<b>205</b>	<b>1,375</b>	<b>5,157</b>	<b>28,124</b>	<b>2,788</b>
	1.2%	14.9%	0.5%	3.1%	11.5%	62.7%	6.2%

ETHNIC DISTRIBUTION  
FALL 2002 COMBINED FUND ENROLLMENT



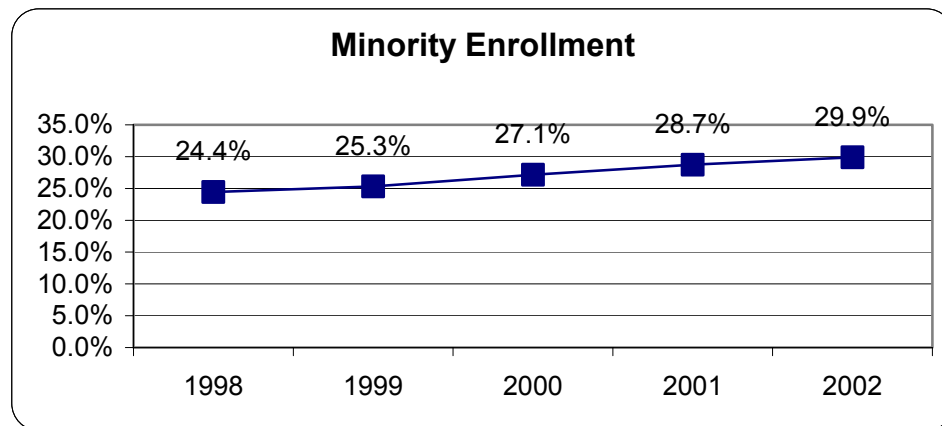
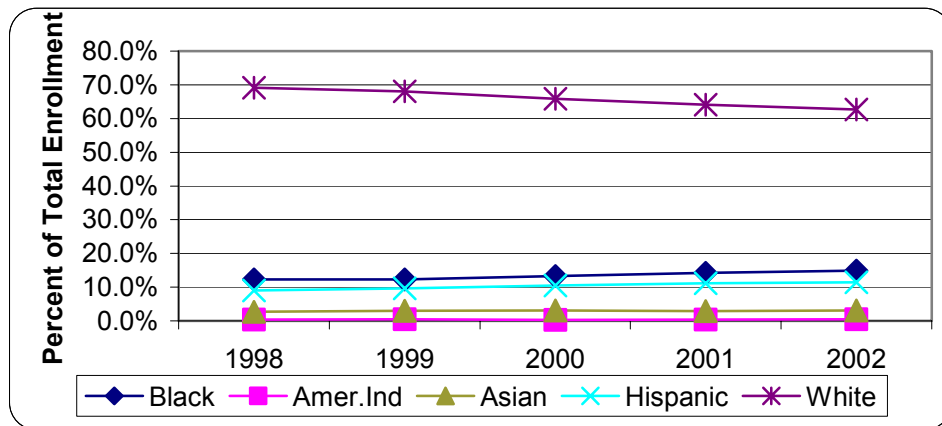
CONNECTICUT COMMUNITY COLLEGES  
ENROLLMENT HISTORY BY ETHNICITY  
FALL 1998 - FALL 2002

**Enrollment**

Year	Non-Res	Black	Amer.Ind	Asian	Hispanic	White	Unk	Total
1998	342	4,847	165	1,062	3,547	27,213	2,178	39,354
1999	292	4,927	176	1,186	3,859	27,282	2,343	40,065
2000	293	5,405	135	1,269	4,274	26,897	2,552	40,825
2001	475	6,082	164	1,235	4,774	27,344	2,568	42,642
2002	543	6,677	205	1,375	5,157	28,124	2,788	44,869

**Percent of Total Enrollment**

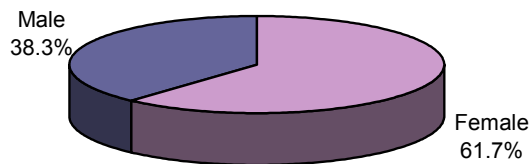
Year	Non-Res	Black	Amer.Ind	Asian	Hispanic	White	Unk
1998	0.9%	12.3%	0.4%	2.7%	9.0%	69.1%	5.5%
1999	0.7%	12.3%	0.4%	3.0%	9.6%	68.1%	5.8%
2000	0.7%	13.2%	0.3%	3.1%	10.5%	65.9%	6.3%
2001	1.1%	14.3%	0.4%	2.9%	11.2%	64.1%	6.0%
2002	1.2%	14.9%	0.5%	3.1%	11.5%	62.7%	6.2%



CONNECTICUT COMMUNITY COLLEGES  
COMBINED FUND ENROLLMENT BY GENDER  
FALL 2002

	FEMALE	MALE	PERCENT	
			Female	Male
Asnuntuck CC	877	847	50.9%	49.1%
Capital CC	2,365	1,111	68.0%	32.0%
Gateway CC	3,309	2,019	62.1%	37.9%
Housatonic CC	3,024	1,491	67.0%	33.0%
Manchester CC	3,133	2,428	56.3%	43.7%
Middlesex CC	1,493	947	61.2%	38.8%
Naugatuck Valley CC	3,060	2,255	57.6%	42.4%
Northwestern Ct. CC	1,083	550	66.3%	33.7%
Norwalk CC	3,521	2,196	61.6%	38.4%
Quinebaug Valley CC	1,031	470	68.7%	31.3%
Three Rivers CC	2,254	1,370	62.2%	37.8%
Tunxis CC	2,539	1,496	62.9%	37.1%
<b>SYSTEM TOTAL</b>	<b>27,689</b>	<b>17,180</b>	<b>61.7%</b>	<b>38.3%</b>

ENROLLMENT BY GENDER  
FALL 2002 COMBINED FUND ENROLLMENT



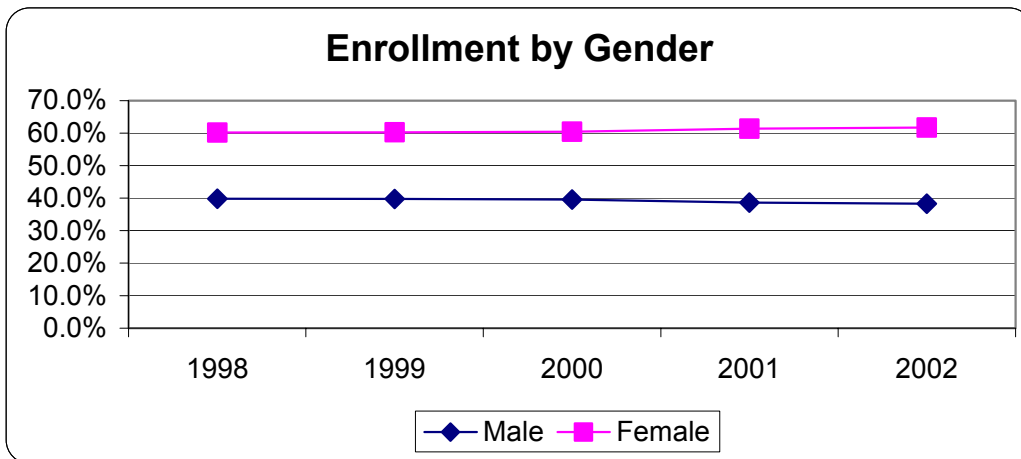
CONNECTICUT COMMUNITY COLLEGES  
ENROLLMENT HISTORY BY GENDER  
FALL 1998 - FALL 2002

**Enrollment**

Year	Male	Female	Total
1998	15,669	23,685	39,354
1999	15,933	24,132	40,065
2000	16,167	24,658	40,825
2001	16,485	26,157	42,642
2002	17,180	27,689	44,869

**Percent of Total**

Year	Male	Female
1998	39.8%	60.2%
1999	39.8%	60.2%
2000	39.6%	60.4%
2001	38.7%	61.3%
2002	38.3%	61.7%



CONNECTICUT COMMUNITY COLLEGES  
COMBINED FUND AGE DISTRIBUTION  
FALL 2002

**FULL-TIME**

	15-19	20-24	25-29	30-34	35-39	40-44	45-59	60+	Total
Asnuntuck CC	197	154	25	13	16	15	14	0	434
Capital CC	239	332	95	69	25	15	16	2	793
Gateway CC	618	578	144	74	43	23	40	2	1,522
Housatonic CC	485	493	117	47	35	16	22	0	1,215
Manchester CC	1,080	735	124	69	41	29	38	1	2,117
Middlesex CC	306	282	47	15	23	17	14	0	704
Naugatuck Valley CC	904	716	119	63	39	28	35	0	1,904
Northwestern Ct. CC	226	169	35	11	16	8	12	1	478
Norwalk CC	710	731	190	76	41	21	27	6	1,802
Quinebaug Valley CC	250	153	26	20	16	7	15	0	487
Three Rivers CC	475	308	90	48	46	21	26	0	1,014
Tunxis CC	623	450	85	40	13	15	19	0	1,245
<b>SYSTEM TOTAL</b>	<b>6,113</b>	<b>5,101</b>	<b>1,097</b>	<b>545</b>	<b>354</b>	<b>215</b>	<b>278</b>	<b>12</b>	<b>13,715</b>
	44.6%	37.2%	8.0%	4.0%	2.6%	1.6%	2.0%	0.1%	

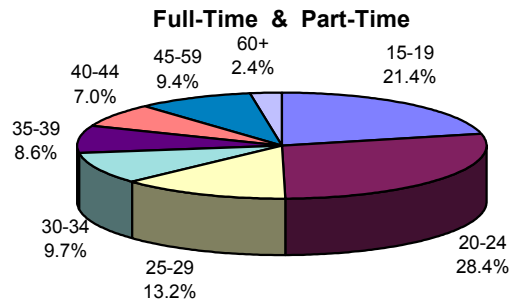
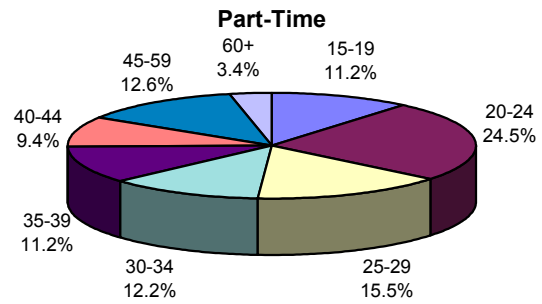
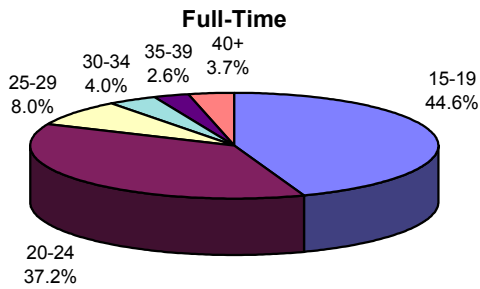
**PART-TIME**

	15-19	20-24	25-29	30-34	35-39	40-44	45-59	60+	Total
Asnuntuck CC	170	346	183	138	135	119	172	27	1,290
Capital CC	252	602	450	383	366	228	301	101	2,683
Gateway CC	443	855	619	487	394	370	502	136	3,806
Housatonic CC	338	885	529	439	363	265	356	125	3,300
Manchester CC	515	925	489	346	356	296	462	55	3,444
Middlesex CC	200	411	256	198	194	183	251	43	1,736
Naugatuck Valley CC	352	913	540	438	396	304	408	60	3,411
Northwestern Ct. CC	128	249	121	98	104	115	188	152	1,155
Norwalk CC	368	930	608	472	392	363	510	272	3,915
Quinebaug Valley CC	131	221	119	121	128	119	154	21	1,014
Three Rivers CC	277	554	455	355	329	314	303	23	2,610
Tunxis CC	309	757	453	333	326	247	318	47	2,790
<b>SYSTEM TOTAL</b>	<b>3,483</b>	<b>7,648</b>	<b>4,822</b>	<b>3,808</b>	<b>3,483</b>	<b>2,923</b>	<b>3,925</b>	<b>1,062</b>	<b>31,154</b>
	11.2%	24.5%	15.5%	12.2%	11.2%	9.4%	12.6%	3.4%	

CONNECTICUT COMMUNITY COLLEGES  
COMBINED FUND AGE DISTRIBUTION  
FALL 2002

**FULL-TIME & PART-TIME**

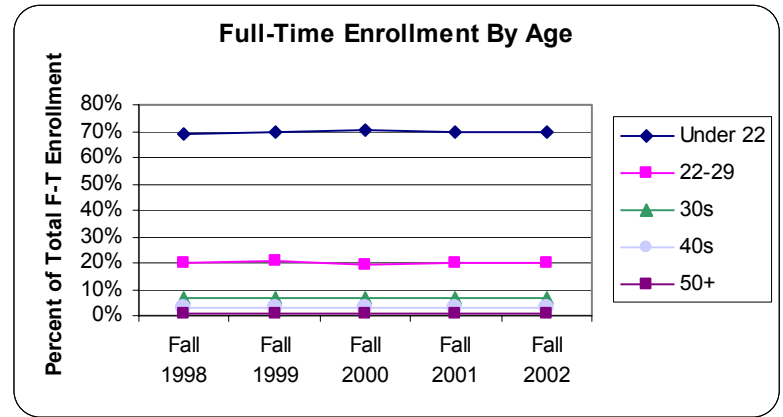
	15-19	20-24	25-29	30-34	35-39	40-44	45-59	60+	Total
Asnuntuck CC	367	500	208	151	151	134	186	27	1,724
Capital CC	491	934	545	452	391	243	317	103	3,476
Gateway CC	1,061	1,433	763	561	437	393	542	138	5,328
Housatonic CC	823	1,378	646	486	398	281	378	125	4,515
Manchester CC	1,595	1,660	613	415	397	325	500	56	5,561
Middlesex CC	506	693	303	213	217	200	265	43	2,440
Naugatuck Valley CC	1,256	1,629	659	501	435	332	443	60	5,315
Northwestern Ct. CC	354	418	156	109	120	123	200	153	1,633
Norwalk CC	1,078	1,661	798	548	433	384	537	278	5,717
Quinebaug Valley CC	381	374	145	141	144	126	169	21	1,501
Three Rivers CC	752	862	545	403	375	335	329	23	3,624
Tunxis CC	932	1,207	538	373	339	262	337	47	4,035
<b>SYSTEM TOTAL</b>	<b>9,596</b>	<b>12,749</b>	<b>5,919</b>	<b>4,353</b>	<b>3,837</b>	<b>3,138</b>	<b>4,203</b>	<b>1,074</b>	<b>44,869</b>
	21.4%	28.4%	13.2%	9.7%	8.6%	7.0%	9.4%	2.4%	



CONNECTICUT COMMUNITY COLLEGES  
ENROLLMENT HISTORY BY AGE  
FALL 2002

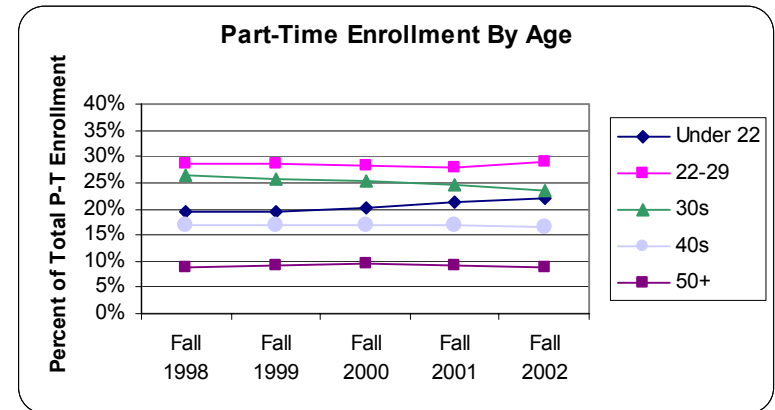
**Percent of Total Full-Time Enrollment**

	Fall 1998	Fall 1999	Fall 2000	Fall 2001	Fall 2002
Under 22	68.9%	69.4%	70.4%	69.5%	69.6%
22-29	20.0%	20.5%	19.4%	20.0%	20.2%
30s	6.9%	6.4%	6.6%	6.8%	6.6%
40s	3.3%	2.7%	2.9%	2.8%	2.8%
50+	0.9%	1.0%	0.7%	0.8%	0.9%
Total	100.0%	100.0%	100.0%	100.0%	100.0%



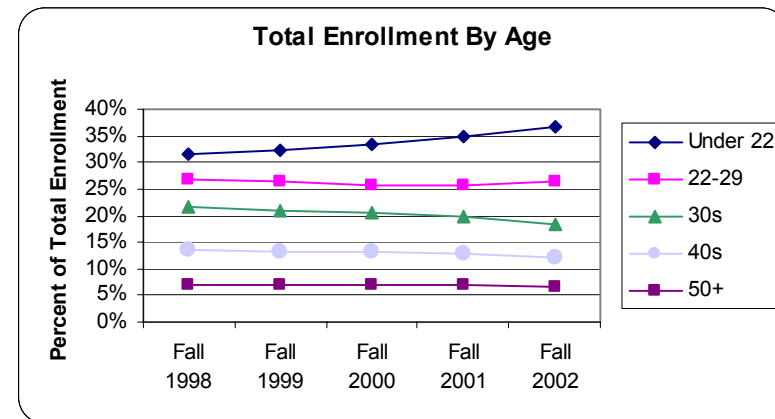
**Percent of Total Part-Time Enrollment**

	Fall 1998	Fall 1999	Fall 2000	Fall 2001	Fall 2002
Under 22	19.5%	19.6%	20.1%	21.4%	22.1%
22-29	28.8%	28.5%	28.1%	27.9%	29.1%
30s	26.3%	25.8%	25.4%	24.8%	23.4%
40s	16.7%	17.0%	17.0%	16.7%	16.4%
50+	8.7%	9.2%	9.5%	9.2%	9.0%
Total	100.0%	100.0%	100.0%	100.0%	100.0%



**Percent of Total Enrollment**

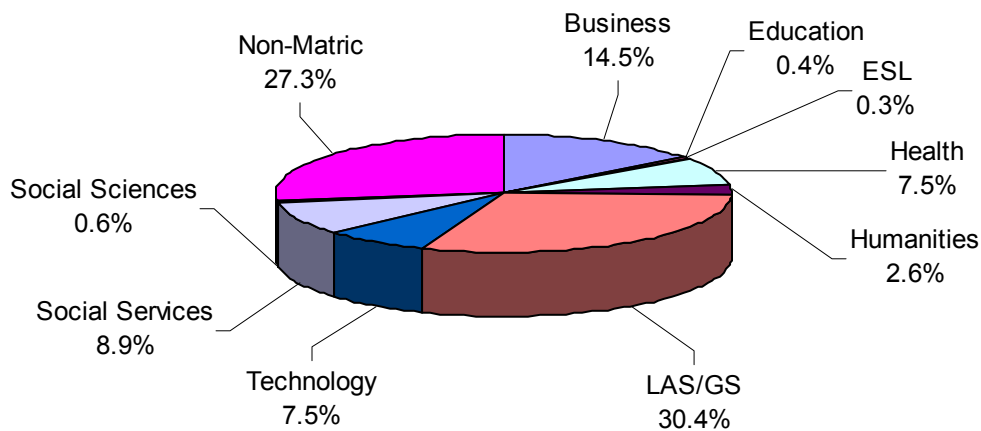
	Fall 1998	Fall 1999	Fall 2000	Fall 2001	Fall 2002
Under 22	31.6%	32.5%	33.5%	35.0%	36.6%
22-29	26.6%	26.4%	25.8%	25.7%	26.4%
30s	21.5%	20.8%	20.4%	19.7%	18.3%
40s	13.4%	13.3%	13.2%	12.8%	12.3%
50+	6.8%	7.0%	7.1%	6.8%	6.5%
Total	100.0%	100.0%	100.0%	100.0%	100.0%



During the summer of 2002 UCONN, CSU, and the community colleges agreed to a set of eight common categories for reporting program enrollments in response to the DHE Performance Measures project. Beginning this year this office will use these same eight categories plus ESL for both the annual fall and spring enrollment reports and the annual report of degrees and certificates conferred.

Occupational programs account for 42.3% of all community college students. Liberal Arts and Sciences and General Studies programs account for an additional 30.4% of all community college students, and the remaining 27.3% of the students are not enrolled in a specific degree or certificate program. Among the occupational programs 14.5% of all community college students are enrolled in business programs, 7.5% in Health and Life Sciences programs, 7.5% in Science, Engineering, and Technology programs, 8.9% in Social and Public Service programs, and 3.9% in Humanities, Arts, and Communications, Social Sciences, Education and ESL.

**Fall 2002 Enrollment by Program Area**



CONNECTICUT COMMUNITY COLLEGES  
CREDIT ENROLLMENT BY PROGRAM AREA  
FALL 2002

Program Area	ASCC	CACC	GWCC	HOCC	MACC	MXCC	NVCC	NWCC	NKCC	QVCC	TRCC	TXCC	TOTAL
<b>Business</b>													
Accounting	60	84		212	304	62	109	31	144	61	126	63	1,256
Business Admin/Management	146	81	376	446	173	97	252	119	230	122	229	416	2,687
Business Information & DP	65	203	197	145	166	79		9	68		9	223	1,164
Business Office Technology	18	39	183	68	98	25	56	19	107	64	44	106	827
Hospitality Services Management			18		17		18		37		24		114
Marketing		1	66		35	24	35		243		45	24	473
<b>Business Total</b>	<b>289</b>	<b>408</b>	<b>840</b>	<b>871</b>	<b>793</b>	<b>287</b>	<b>470</b>	<b>178</b>	<b>829</b>	<b>247</b>	<b>477</b>	<b>832</b>	<b>6,521</b>
<b>Education</b>													
Teacher Asst/Special Education			36	1	151								188
<b>Education Total</b>	<b>0</b>	<b>0</b>	<b>36</b>	<b>1</b>	<b>151</b>	<b>0</b>	<b>0</b>	<b>0</b>	<b>0</b>	<b>0</b>	<b>0</b>	<b>0</b>	<b>188</b>
<b>ESL</b>													
English as a Second Language				11					79			48	138
<b>ESL Total</b>	<b>0</b>	<b>0</b>	<b>0</b>	<b>11</b>	<b>0</b>	<b>0</b>	<b>0</b>	<b>0</b>	<b>79</b>	<b>0</b>	<b>0</b>	<b>48</b>	<b>138</b>
<b>Health/Life Sciences</b>													
Allied Health		120	343	138	167	50	87	242	14	126		111	1,398
Mental Health/Human Services	48	11	236	221	81	46	241	39	91	83	66	157	1,320
Nursing		234		12			152		122		120		640
<b>Health/Life Sciences Total</b>	<b>48</b>	<b>365</b>	<b>579</b>	<b>371</b>	<b>248</b>	<b>96</b>	<b>480</b>	<b>281</b>	<b>227</b>	<b>209</b>	<b>186</b>	<b>268</b>	<b>3,358</b>
<b>Humanities/Arts/Communications</b>													
Communications					117	5			12		2	9	145
Fine Arts/Visual & Performing Arts			32	42	59	55	159	85		81	4	65	582
Graphic Design	21			124	111		15	8	11		3	128	421
<b>Humanities/Arts/Comm. Total</b>	<b>21</b>	<b>0</b>	<b>32</b>	<b>166</b>	<b>287</b>	<b>60</b>	<b>174</b>	<b>93</b>	<b>23</b>	<b>81</b>	<b>9</b>	<b>202</b>	<b>1,148</b>
<b>Liberal Arts &amp; General Studies</b>													
General Studies	294	2	1,452	1,490	1,248	620	815	167	863	329	1,141	705	9,126
Liberal Arts & Sciences	58	1,329	98	354	258	25	906	136	507	296	342	214	4,523
<b>Liberal Arts &amp; General Studies Total</b>	<b>352</b>	<b>1,331</b>	<b>1,550</b>	<b>1,844</b>	<b>1,506</b>	<b>645</b>	<b>1,721</b>	<b>303</b>	<b>1,370</b>	<b>625</b>	<b>1,483</b>	<b>919</b>	<b>13,649</b>

CREDIT ENROLLMENT BY PROGRAM AREA (continued)

Program Area	ASCC	CACC	GWCC	HOCC	MACC	MXCC	NVCC	NWCC	NKCC	QVCC	TRCC	TXCC	TOTAL
<b>Science/Engineering/Technology</b>													
Architectural/Civil Engineering Tech		29							120		26		175
Communications Technologies	24					66	3						93
Electrical/Computer Eng Tech		36	165		21		405		23		97		747
Electromech/Biomedical Eng Tech			16					71					87
Engineering Science	6	5	39	11	58	11	5	1	58	12	6	29	241
Environmental Technologies					5	30	36				22		93
Industrial Production Technologies	5	1	24				60			10	14		114
Information Technology			21		156				176	108	157		618
Manufacturing Engineering					10								10
Mechanical Engineering Tech		8	139								72		219
Mechanics and Repairers			26	5			89			2			122
Precision Production			48				6				61		115
Science Technologies		13	2		25		84	1			32		157
Technological Studies	33	1	21	19		9	193	8	216	4	21	41	566
<b>Science/Engineering/Tech Total</b>	<b>68</b>	<b>93</b>	<b>501</b>	<b>35</b>	<b>275</b>	<b>116</b>	<b>881</b>	<b>81</b>	<b>593</b>	<b>136</b>	<b>508</b>	<b>70</b>	<b>3,357</b>
<b>Social &amp; Public Services</b>													
Criminal Justice & Corrections	43			243	241	67	189	76	115		114	328	1,416
Early Childhood Education	64	99	309	362		14	179	39	314		165	131	1,676
Fire Technology		24	1				41		19		30		115
Parks, Recreation & Leisure				1	54		2	23	37				117
Public Admin/Social Services		189	110		241		26		61		43		670
<b>Social &amp; Public Services Total</b>	<b>107</b>	<b>312</b>	<b>420</b>	<b>606</b>	<b>536</b>	<b>81</b>	<b>437</b>	<b>138</b>	<b>546</b>	<b>0</b>	<b>352</b>	<b>459</b>	<b>3,994</b>
<b>Social Sciences</b>													
Paralegal/Legal Assistant					110		77	3	50				240
Social Sciences, Other							13		12				25
<b>Social Sciences Total</b>	<b>0</b>	<b>0</b>	<b>0</b>	<b>0</b>	<b>110</b>	<b>0</b>	<b>90</b>	<b>3</b>	<b>62</b>	<b>0</b>	<b>0</b>	<b>0</b>	<b>265</b>
<b>Non-matriculated</b>													
<b>Non-matriculated Total</b>	<b>839</b>	<b>967</b>	<b>1,370</b>	<b>610</b>	<b>1,655</b>	<b>1,155</b>	<b>1,062</b>	<b>556</b>	<b>1,988</b>	<b>203</b>	<b>609</b>	<b>1,237</b>	<b>12,251</b>
<b>Grand Total</b>	<b>1,724</b>	<b>3,476</b>	<b>5,328</b>	<b>4,515</b>	<b>5,561</b>	<b>2,440</b>	<b>5,315</b>	<b>1,633</b>	<b>5,717</b>	<b>1,501</b>	<b>3,624</b>	<b>4,035</b>	<b>44,869</b>

CONNECTICUT COMMUNITY COLLEGES  
CREDIT ENROLLMENT BY PROGRAM AREA & ETHNICITY  
FALL 2002

**Fall 2002 Credit Enrollment in Associate Degree and Certificate Programs**

Program Area	Non-Res.	%	Black	%	Amer.Ind.	%	Asian	%	Hispanic	%	White	%	Unk	%	Total
Business	140	2.1%	1,129	17.3%	47	0.7%	273	4.2%	854	13.1%	3,745	57.4%	333	5.1%	6,521
Education	3	1.6%	23	12.2%	2	1.1%	2	1.1%	25	13.3%	127	67.6%	6	3.2%	188
ESL	13	9.4%	5	3.6%		0.0%	12	8.7%	47	34.1%	54	39.1%	7	5.1%	138
Health/Life Sciences	24	0.7%	680	20.3%	7	0.2%	63	1.9%	361	10.8%	2,055	61.2%	168	5.0%	3,358
Humanities/Arts/Communications	10	0.9%	99	8.6%	5	0.4%	34	3.0%	111	9.7%	829	72.2%	60	5.2%	1,148
Liberal Arts & General Studies	134	1.0%	2,357	17.3%	69	0.5%	307	2.2%	1,788	13.1%	8,213	60.2%	781	5.7%	13,649
Science/Engineering/Technology	72	2.1%	374	11.1%	17	0.5%	153	4.6%	349	10.4%	2,162	64.4%	230	6.9%	3,357
Social & Public Services	27	0.7%	708	17.7%	6	0.2%	52	1.3%	612	15.3%	2,414	60.4%	175	4.4%	3,994
Social Sciences	6	2.3%	34	12.8%	1	0.4%	2	0.8%	24	9.1%	176	66.4%	22	8.3%	265
Non-Degree	114	0.9%	1,268	10.4%	51	0.4%	477	3.9%	986	8.0%	8,349	68.1%	1,006	8.2%	12,251
<b>Total</b>	<b>543</b>	<b>1.2%</b>	<b>6,677</b>	<b>14.9%</b>	<b>205</b>	<b>0.5%</b>	<b>1,375</b>	<b>3.1%</b>	<b>5,157</b>	<b>11.5%</b>	<b>28,124</b>	<b>62.7%</b>	<b>2,788</b>	<b>6.2%</b>	<b>44,869</b>

**Fall 2002 Credit Enrollment in Associate Degree Programs**

Program Area	Non-Res.	%	Black	%	Amer.Ind.	%	Asian	%	Hispanic	%	White	%	Unk	%	Total
Business	138	2.3%	1,057	17.8%	40	0.7%	246	4.1%	785	13.2%	3,370	56.8%	295	5.0%	5,931
Education	2	1.1%	21	12.1%	2	1.1%	2	1.1%	23	13.2%	118	67.8%	6	3.4%	174
Health/Life Sciences	23	0.8%	531	19.5%	6	0.2%	56	2.1%	296	10.9%	1,679	61.5%	137	5.0%	2,728
Humanities/Arts/Communications	9	0.9%	92	8.7%	4	0.4%	32	3.0%	106	10.1%	755	71.7%	55	5.2%	1,053
Liberal Arts & General Studies	134	1.0%	2,356	17.3%	68	0.5%	306	2.2%	1,785	13.1%	8,190	60.1%	780	5.7%	13,619
Science/Engineering/Technology	71	2.3%	349	11.5%	16	0.5%	141	4.7%	324	10.7%	1,925	63.6%	200	6.6%	3,026
Social & Public Services	25	0.7%	610	17.3%	5	0.1%	42	1.2%	547	15.5%	2,136	60.6%	157	4.5%	3,522
Social Sciences	6	2.9%	33	16.1%	1	0.5%	2	1.0%	22	10.7%	127	62.0%	14	6.8%	205
<b>Total</b>	<b>408</b>	<b>1.3%</b>	<b>5,049</b>	<b>16.7%</b>	<b>142</b>	<b>0.5%</b>	<b>827</b>	<b>2.7%</b>	<b>3,888</b>	<b>12.8%</b>	<b>18,300</b>	<b>60.5%</b>	<b>1,644</b>	<b>5.4%</b>	<b>30,258</b>

**Fall 2002 Credit Enrollment in Certificate Programs**

Program Area	Non-Res.	%	Black	%	Amer.Ind.	%	Asian	%	Hispanic	%	White	%	Unk	%	Total
Business	2	0.3%	72	12.2%	7	1.2%	27	4.6%	69	11.7%	375	63.6%	38	6.4%	590
Education	1	7.1%	2	14.3%		0.0%		0.0%	2	14.3%	9	64.3%		0.0%	14
ESL	13	9.4%	5	3.6%		0.0%	12	8.7%	47	34.1%	54	39.1%	7	5.1%	138
Health/Life Sciences	1	0.2%	149	23.7%	1	0.2%	7	1.1%	65	10.3%	376	59.7%	31	4.9%	630
Humanities/Arts/Communications	1	1.1%	7	7.4%	1	1.1%	2	2.1%	5	5.3%	74	77.9%	5	5.3%	95
Liberal Arts & General Studies		0.0%	1	3.3%	1	3.3%	1	3.3%	3	10.0%	23	76.7%	1	3.3%	30
Science/Engineering/Technology	1	0.3%	25	7.6%	1	0.3%	12	3.6%	25	7.6%	237	71.6%	30	9.1%	331
Social & Public Services	2	0.4%	98	20.8%	1	0.2%	10	2.1%	65	13.8%	278	58.9%	18	3.8%	472
Social Sciences		0.0%	1	1.7%		0.0%		0.0%	2	3.3%	49	81.7%	8	13.3%	60
<b>Total</b>	<b>21</b>	<b>0.9%</b>	<b>360</b>	<b>15.3%</b>	<b>12</b>	<b>0.5%</b>	<b>71</b>	<b>3.0%</b>	<b>283</b>	<b>12.0%</b>	<b>1,475</b>	<b>62.5%</b>	<b>138</b>	<b>5.8%</b>	<b>2,360</b>

CONNECTICUT COMMUNITY COLLEGES  
CREDIT ENROLLMENT BY PROGRAM AREA & GENDER  
FALL 2002

**Fall 2002 Credit Enrollment in Associate Degree and Certificate Programs**

Program Area	Female	%	Male	%	Total
Business	4,038	61.9%	2,483	38.1%	6,521
Education	166	88.3%	22	11.7%	188
ESL	101	73.2%	37	26.8%	138
Health/Life Sciences	2,828	84.2%	530	15.8%	3,358
Humanities/Arts/Communications	621	54.1%	527	45.9%	1,148
Liberal Arts & General Studies	9,306	68.2%	4,343	31.8%	13,649
Science/Engineering/Technology	686	20.4%	2,671	79.6%	3,357
Social & Public Services	2,765	69.2%	1,229	30.8%	3,994
Social Sciences	223	84.2%	42	15.8%	265
Non-Matriculated	6,955	56.8%	5,296	43.2%	12,251
<b>Total</b>	<b>27,689</b>	<b>61.7%</b>	<b>17,180</b>	<b>38.3%</b>	<b>44,869</b>

**Fall 2002 Credit Enrollment in Associate Degree Programs**

Program Area	Female	%	Male	%	Total
Business	3,632	61.2%	2,299	38.8%	5,931
Education	153	87.9%	21	12.1%	174
Health/Life Sciences	2,291	84.0%	437	16.0%	2,728
Humanities/Arts/Communications	569	54.0%	484	46.0%	1,053
Liberal Arts & General Studies	9,283	68.2%	4,336	31.8%	13,619
Science/Engineering/Technology	606	20.0%	2,420	80.0%	3,026
Social & Public Services	2,421	68.7%	1,101	31.3%	3,522
Social Sciences	176	85.9%	29	14.1%	205
<b>Total</b>	<b>19,131</b>	<b>63.2%</b>	<b>11,127</b>	<b>36.8%</b>	<b>30,258</b>

**Fall 2002 Credit Enrollment in Certificate Programs**

Program Area	Female	%	Male	%	Total
Business	406	68.8%	184	31.2%	590
Education	13	92.9%	1	7.1%	14
ESL	101	73.2%	37	26.8%	138
Health/Life Sciences	537	85.2%	93	14.8%	630
Humanities/Arts/Communications	52	54.7%	43	45.3%	95
Liberal Arts & General Studies	23	76.7%	7	23.3%	30
Science/Engineering/Technology	80	24.2%	251	75.8%	331
Social & Public Services	344	72.9%	128	27.1%	472
Social Sciences	47	78.3%	13	21.7%	60
<b>Total</b>	<b>1,603</b>	<b>67.9%</b>	<b>757</b>	<b>32.1%</b>	<b>2,360</b>

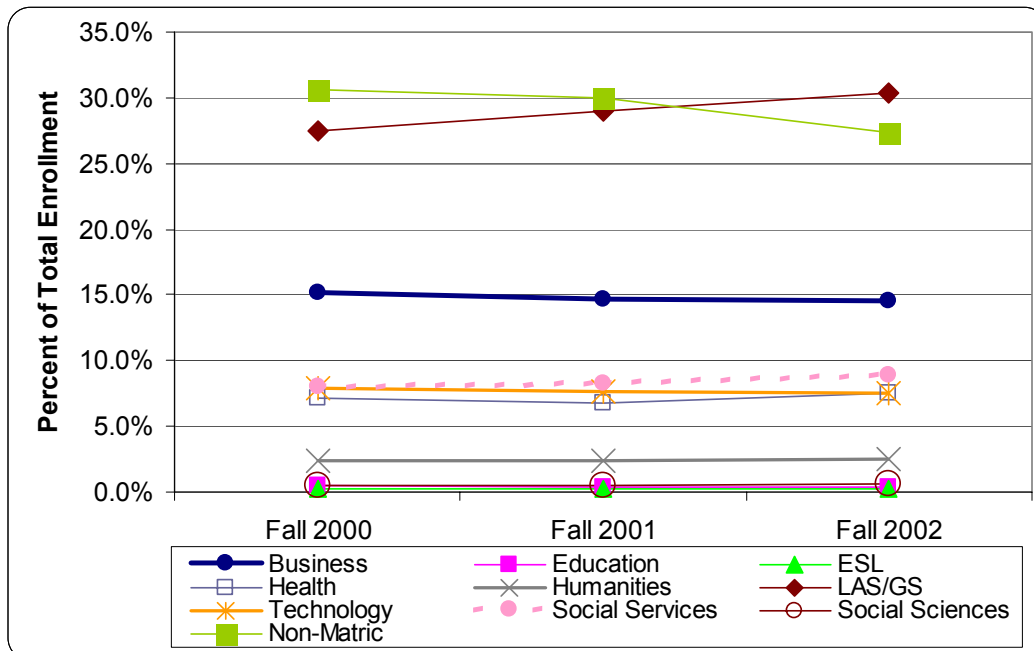
CONNECTICUT COMMUNITY COLLEGES  
ENROLLMENT HISTORY BY PROGRAM AREA  
FALL 2000 - FALL 2002

**Enrollment**

Program Area	Fall 2000	Fall 2001	Fall 2002
Business	6,178	6,266	6,521
Education	196	162	188
ESL	117	123	138
Health/Life Sciences	2,924	2,874	3,358
Humanities/Arts/Communications	962	1,015	1,148
Liberal Arts & General Studies	11,235	12,354	13,649
Science/Engineering/Technology	3,210	3,287	3,357
Social & Public Services	3,292	3,539	3,994
Social Sciences	228	230	265
Non-Matriculated	12,483	12,792	12,251
<b>Total</b>	<b>40,825</b>	<b>42,642</b>	<b>44,869</b>

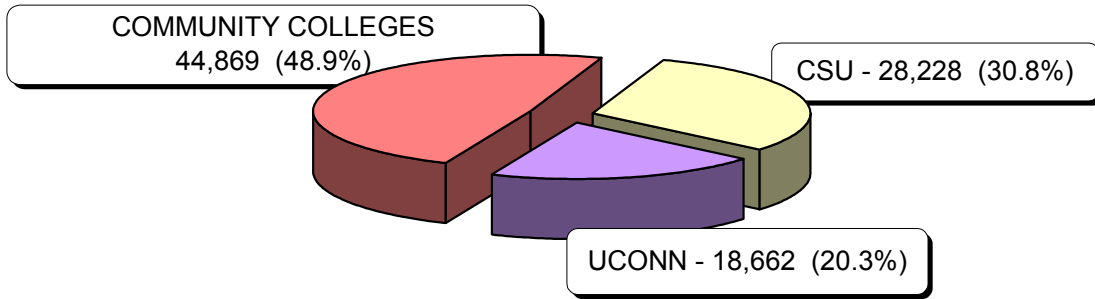
**Percent of Total Enrollment**

Program Area	Fall 2000	Fall 2001	Fall 2002
Business	15.1%	14.7%	14.5%
Education	0.5%	0.4%	0.4%
ESL	0.3%	0.3%	0.3%
Health/Life Sciences	7.2%	6.7%	7.5%
Humanities/Arts/Communications	2.4%	2.4%	2.6%
Liberal Arts & General Studies	27.5%	29.0%	30.4%
Science/Engineering/Technology	7.9%	7.7%	7.5%
Social & Public Services	8.1%	8.3%	8.9%
Social Sciences	0.6%	0.5%	0.6%
Non-Matriculated	30.6%	30.0%	27.3%
<b>Total</b>	<b>100.0%</b>	<b>100.0%</b>	<b>100.0%</b>

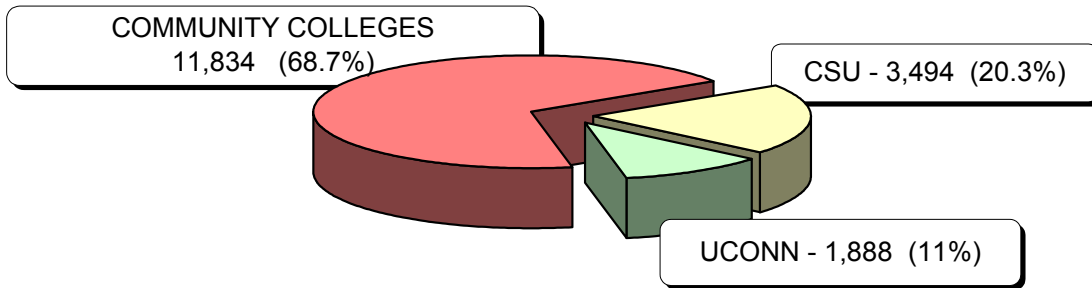




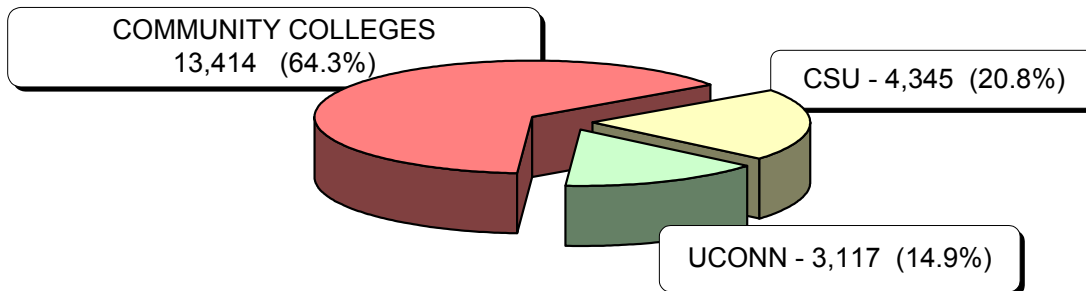
UNDERGRADUATES AT PUBLIC INSTITUTIONS  
FALL 2002 HEADCOUNT ENROLLMENT



UNDERGRADUATES AT PUBLIC INSTITUTIONS  
FALL 2002 AFRICAN AMERICAN & HISPANIC ENROLLMENT

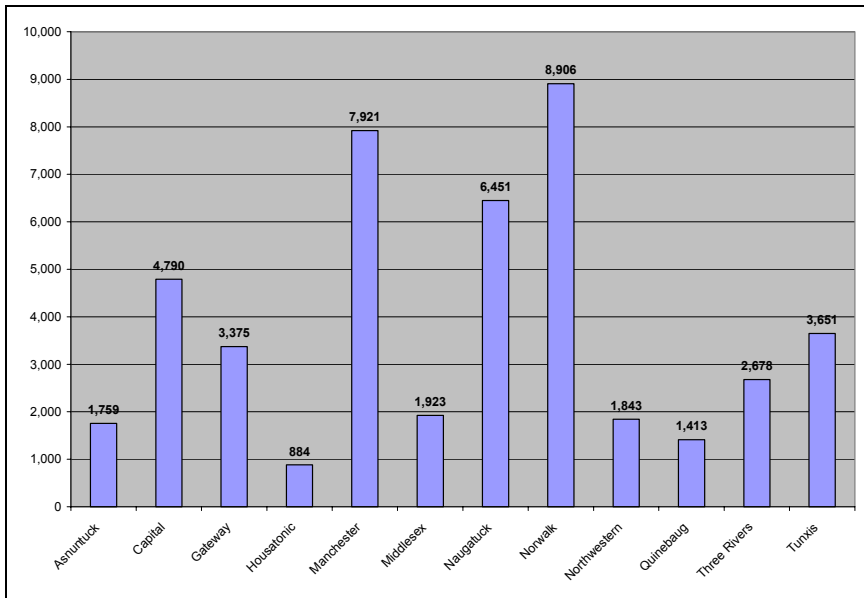


UNDERGRADUATES AT PUBLIC INSTITUTIONS  
FALL 2002 MINORITY ENROLLMENT



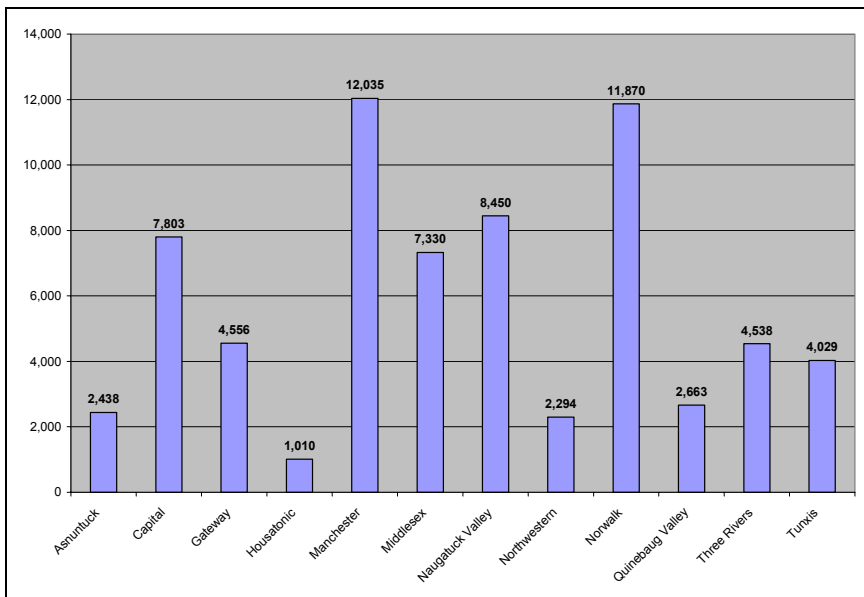
# Non-Credit Enrollment

## Non-Credit Headcount by College (Summer 2001-Spring 2002)



2001-2002 Non-Credit Headcount (Summer 01-Spring 02)	
	Total Headcount
Asnuntuck	1,759
Capital	4,790
Gateway	3,375
Housatonic	884
Manchester	7,921
Middlesex	1,923
Naugatuck	6,451
Norwalk	8,906
Northwestern	1,843
Quinebaug	1,413
Three Rivers	2,678
Tunxis	3,651
<b>System Total</b>	<b>45,594</b>

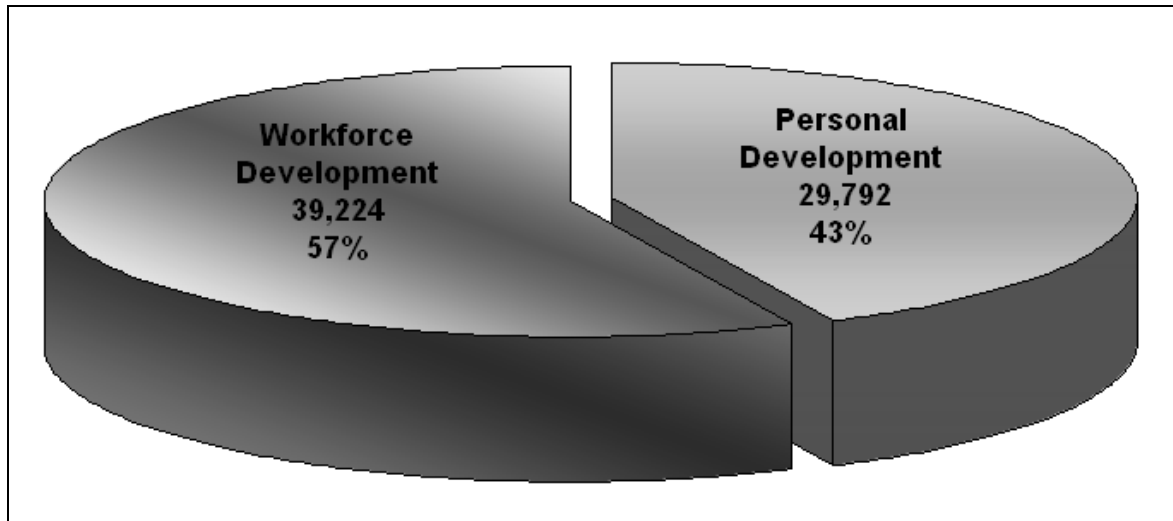
## Non-Credit Registrations by College (Summer 2001-Spring 2002)



2001-2002 Non-Credit Registrations (Summer 01-Spring 02)	
	Total Registrations
Asnuntuck	2,438
Capital	7,803
Gateway	4,556
Housatonic	1,010
Manchester	12,035
Middlesex	7,330
Naugatuck Valley	8,450
Northwestern	2,294
Norwalk	11,870
Quinebaug Valley	2,663
Three Rivers	4,538
Tunxis	4,029
<b>System Total</b>	<b>69,016</b>

## Non-Credit Registrations

### Non-Credit Registrations by Product Type



### What is a “Product Type”?

Extension non-credit courses encompass a variety of instructional activities, which are now classified into two major reporting categories for purposes of system-wide reporting of non-credit seat count (registrations). Every non-credit course section that is set up in BANNER is now being assigned one of two “Product Type” attributes, which indicates what the college believes to be the primary interest of the majority of students who will register in the section.

At the system level, non-credit instructional registration and related revenue data will be reported in the following two Product Type categories:

- Workforce Development
- Personal Development

Revenue reporting for each of these two categories will be accomplished by using the “Revenue Account” codes incorporated into each detail code and applied to course sections and/or miscellaneous receivables. By creating specific detail codes and using them in conjunction with matching section attribute code, new reports are being created that report enrollment and revenue for related groups of course sections in each Product Type category.

### How is each “Product Type” reporting category defined?

- **Workforce Development** includes non-credit courses related to job entry, job advancement, and job retraining that support statewide efforts to provide a well-trained, diverse workforce, and may include business, commerce, technology, health services, manufacturing, childcare and public/human service. Examples of such courses include training in Microsoft Office software applications, shop math, and bookkeeping.
- **Personal Development** includes non-credit courses and instructional programs that help an individual understand oneself, others, or the community, appreciate culture, and develop practical skills for effective use of leisure time, and may include self-improvement, cultural enrichment, communication skills and recreational activities. Examples of such courses include assertiveness training, fine arts, performing arts, gardening, woodworking, and yoga; and courses which address both general and specific community interests, such as boating and motorcycle safety, senior programs, cultural enrichment, and foreign language courses. (This category includes what was previously included in the two old reporting categories of personal enrichment and community service instruction.)

## Non-Credit Registrations

### Non-Credit Registrations by College then by Product Type

<b>College</b>	<b>Personal Development</b>	<b>Workforce Development</b>	<b>System Total</b>
Asnuntuck	823	1,615	2,438
Capital	440	7,363	7,803
Gateway	2,382	2,174	4,556
Housatonic	175	835	1,010
Manchester	5,963	6,072	12,035
Middlesex	4,361	2,969	7,330
Naugatuck Valley	2,879	5,571	8,450
Northwestern	1,069	1,225	2,294
Norwalk	4,283	7,587	11,870
Quinebaug Valley	2,042	621	2,663
Three Rivers	3,921	617	4,538
Tunxis	1,454	2,575	4,029
<b>System Total</b>	<b>29,792</b>	<b>39,224</b>	<b>69,016</b>

### Non-Credit Registration Percentages by College then by Product Type

<b>College</b>	<b>Personal Development</b>	<b>Workforce Development</b>	<b>System Total</b>
Asnuntuck	33.76%	66.24%	100.00%
Capital	5.64%	94.36%	100.00%
Gateway	52.28%	47.72%	100.00%
Housatonic	17.33%	82.67%	100.00%
Manchester	49.55%	50.45%	100.00%
Middlesex	59.50%	40.50%	100.00%
Naugatuck Valley	34.07%	65.93%	100.00%
Northwestern	46.60%	53.40%	100.00%
Norwalk	36.08%	63.92%	100.00%
Quinebaug Valley	76.68%	23.32%	100.00%
Three Rivers	86.40%	13.60%	100.00%
Tunxis	36.09%	63.91%	100.00%
<b>System Total</b>	<b>43.17%</b>	<b>56.83%</b>	<b>100.00%</b>