



Education That Works For a Lifetime

Fall 2003 Credit Enrollment Report

~~~~~  
Dr. Corby A. Coperthwaite & Mr. Dennis G. Jones  
Office of Planning, Research and Assessment  
Board of Trustees  
Connecticut Community-Technical Colleges  
61 Woodland Street  
Hartford, Connecticut 06105

Phone: (860)244-7604  
Fax: (860)566-1308  
CCoperthwaite@commnet.edu  
~~~~~

Contents

Fall 2002 Credit Enrollment Introduction	2
Headcount and FTE Enrollment History	3
Combined Fund FTE Enrollment – Fall 2002 & Fall 2003	4
General Fund FTE Enrollment – Fall 2002 & Fall 2003	5
Combined Fund Enrollment – Full-time/Part-time	6
General Fund Enrollment – Full-time/Part-time	7
Extension Fund Enrollment – Full-time/Part-time	8
Combined Fund Student Enrollment History	9
Combined Fund FTE Enrollment History	10
Combined Fund Enrollment by Ethnic Group	11
Enrollment History by Ethnicity	12
Undergraduates at Public Institutions	13
Combined Fund Enrollment by Gender	14
Enrollment History by Gender	15
Combined Fund Age Distribution	16
Enrollment History by Age	18
Credit Enrollment by Program Area	19
Credit Enrollment History by Program Area	20
Credit Enrollment by Program Area and Gender	21
Credit Enrollment by Program Area and Ethnicity	22
Credit Enrollment by Associate Degree Program Area	23
Credit Enrollment by Certificate Program Area	25
Credit Enrollment by Associate Degree & Certificate Program Area	27
Geographic Distribution	29

Introduction

In the Fall of 2003, there are 45,160 students enrolled in Connecticut community colleges. This represents a 0.6% increase over Fall 2002. Enrollment is at its highest level since 1993 when it peaked at 45,542. This fall is also a record-breaking semester with respect to FTE. Our colleges are serving 24,155 Full-time Equivalent Students, which is the largest number ever. As compared to Fall 2002, General Fund headcount enrollment has increased by 0.5 % and General Fund FTE enrollment has increased by 2.6%.

In the Fall 2003 semester, 68% of all community college students are part-time, and 32% are full-time. As a percent of total enrollment, full-time attendance has increased by 6.2% since Fall 1999, while part-time attendance has decreased by 6.2%. From 1998 to 2001, part-time students generated more FTE than full-time students. However, this fall full-time students account for 52.2% of the total FTE generated.

This fall minority enrollments represent 30.7% of the student body (27.2% are Black and Hispanic). This represents a 5.4% increase in minority enrollment since 1999. The system's gender composition has remained relatively consistent over the past five years. This fall 62.7% of the student body is female and 37.3% is male.

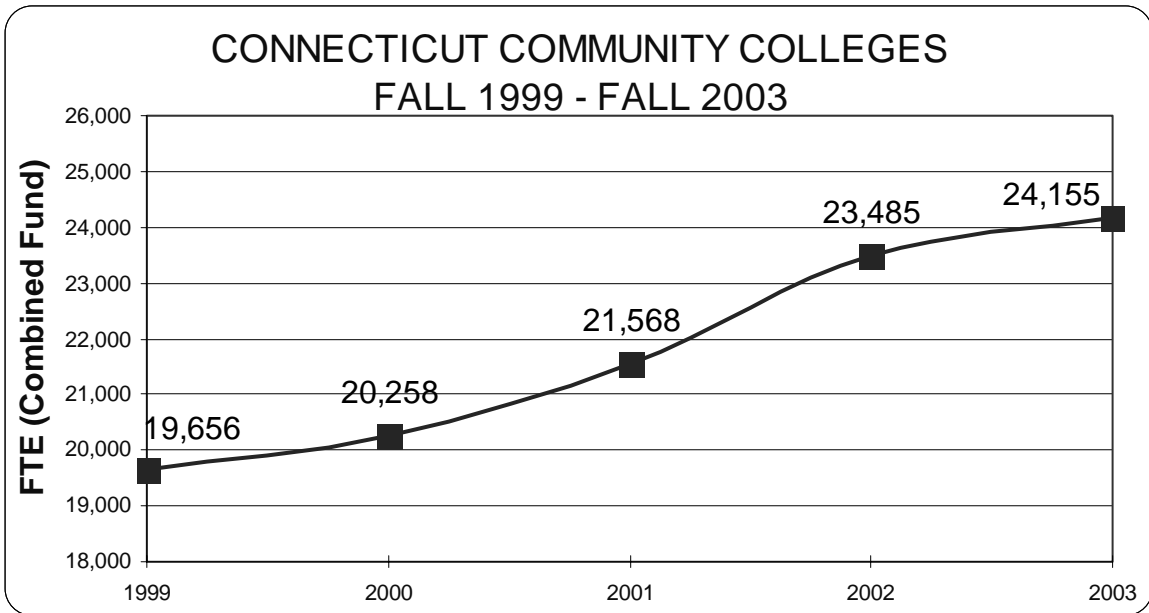
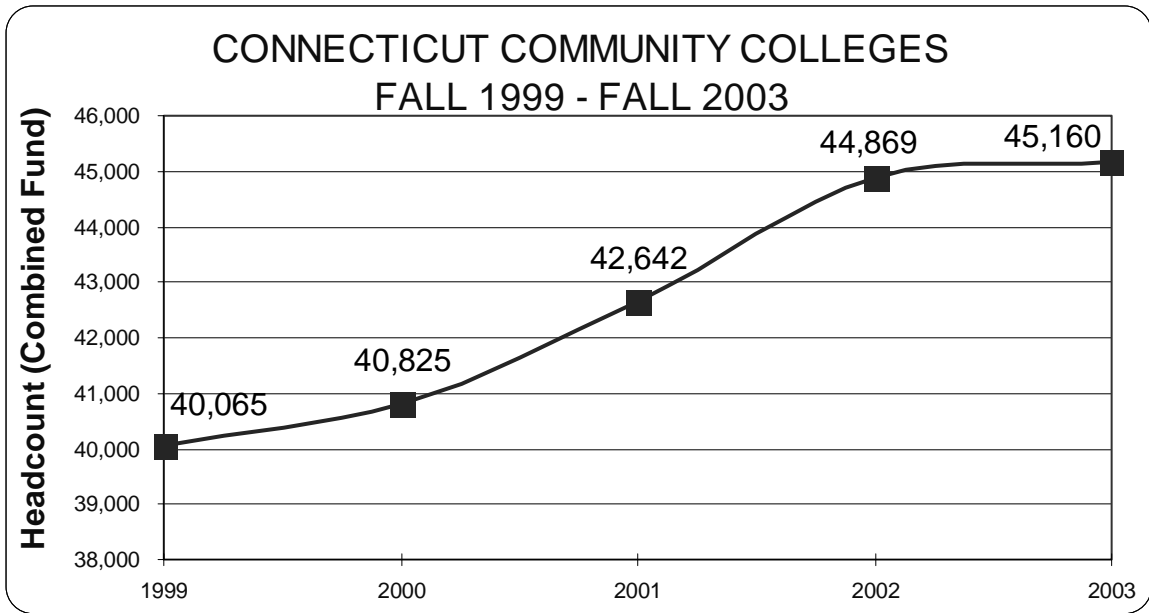
The average age of the student population is 29; 22 for full-time students and 32 for part-timers. Full-time enrollment continues to increase and these are generally the more "traditional age" college students; 72.1% of them are under the age of 22. Overall 38.7% of our students are under the age of 22. This represents a 6.3% increase since 1999 and the largest proportion of our student body.

In the Fall of 2003, 42.1% of all community college students are enrolled in occupational programs. Liberal Arts and Sciences and General Studies programs account for an additional 32.6% of all community college students and the remaining 25.3% of the students are not enrolled in a specific degree or certificate program. Over the last four years, among specific programs, Liberal Arts and General Studies have seen the largest growth; up 5% since Fall 2000.

The most popular programs among minority students are Liberal Arts/General Studies, Business and Social/Public Services. The same is true for non-minorities.

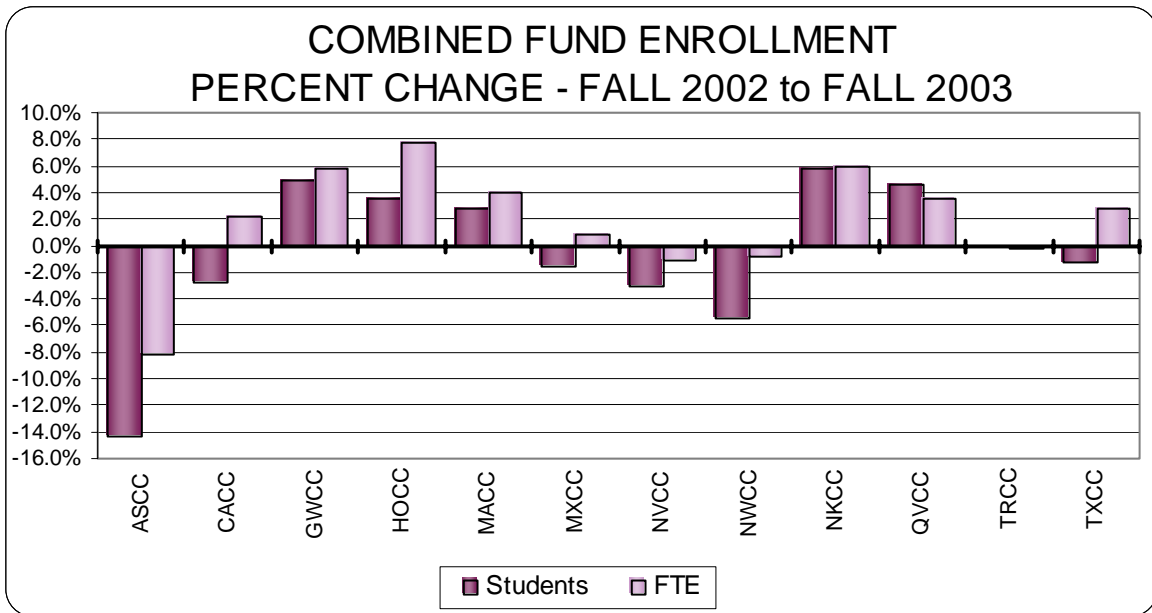
The most popular programs among female students are Liberal Arts/General Studies, Business and Health/Life Sciences. The popular programs among males are Liberal Arts/General Studies, Business and Science/Engineering/Technology.

Our credit students come from all over the state of Connecticut and represent 49.1% of the total undergraduate student enrollment in public higher education. Our students reside in 168 out of 169 towns – no students are from Warren this semester (see the map on page 29).



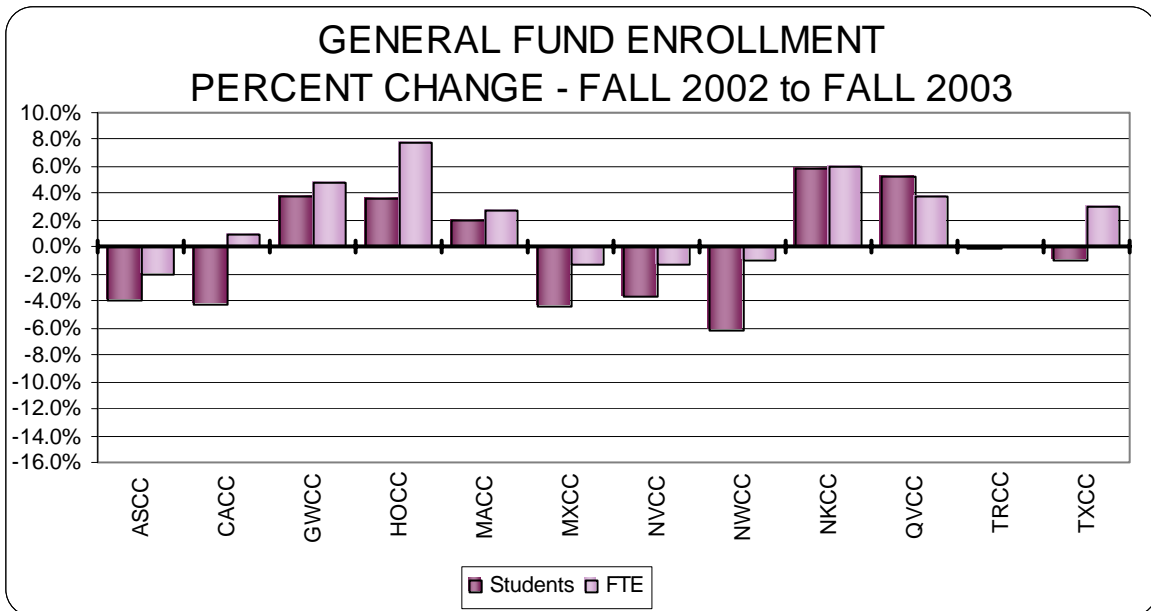
CONNECTICUT COMMUNITY COLLEGES
COMBINED FUND ENROLLMENT
FALL 2002 & FALL 2003

	FALL 2002		FALL 2003		PERCENT CHANGE	
	STUDENTS	FTE	STUDENTS	FTE	STUDENTS	FTE
Asnuntuck CC	1,724	800	1,476	734	-14.4%	-8.2%
Capital CC	3,476	1,756	3,381	1,795	-2.7%	2.2%
Gateway CC	5,328	2,748	5,587	2,909	4.9%	5.8%
Housatonic CC	4,515	2,309	4,678	2,487	3.6%	7.7%
Manchester CC	5,561	3,127	5,717	3,249	2.8%	3.9%
Middlesex CC	2,440	1,235	2,400	1,245	-1.6%	0.8%
Naugatuck Valley CC	5,315	2,938	5,155	2,903	-3.0%	-1.2%
Northwestern Ct. CC	1,633	781	1,543	775	-5.5%	-0.8%
Norwalk CC	5,717	3,092	6,047	3,278	5.8%	6.0%
Quinebaug Valley CC	1,501	794	1,571	821	4.7%	3.5%
Three Rivers CC	3,624	1,895	3,622	1,892	-0.1%	-0.1%
Tunxis CC	4,035	2,011	3,983	2,068	-1.3%	2.8%
SYSTEM TOTAL	44,869	23,485	45,160	24,155	0.6%	2.9%



CONNECTICUT COMMUNITY COLLEGES
GENERAL FUND ENROLLMENT
FALL 2002 & FALL 2003

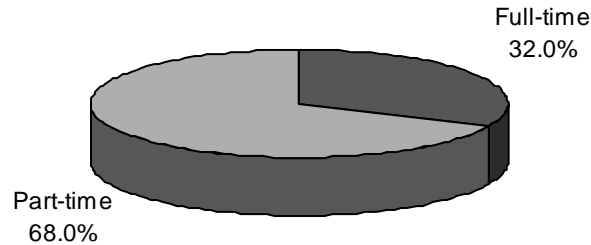
	FALL 2002		FALL 2003		PERCENT CHANGE	
	STUDENTS	FTE	STUDENTS	FTE	STUDENTS	FTE
Asnuntuck CC	1,442	727	1,384	712	-4.0%	-2.0%
Capital CC	3,476	1,756	3,327	1,773	-4.3%	1.0%
Gateway CC	5,328	2,748	5,527	2,881	3.7%	4.8%
Housatonic CC	4515	2,309	4,678	2,487	3.6%	7.7%
Manchester CC	5,546	3,110	5,655	3,194	2.0%	2.7%
Middlesex CC	2,440	1,235	2,333	1,220	-4.4%	-1.3%
Naugatuck Valley CC	5,301	2,933	5,108	2,893	-3.6%	-1.4%
Northwestern Ct. CC	1,597	769	1,497	761	-6.3%	-1.1%
Norwalk CC	5,717	3,092	6,047	3,278	5.8%	6.0%
Quinebaug Valley CC	1,492	792	1,571	821	5.3%	3.7%
Three Rivers CC	3,597	1,886	3,592	1,886	-0.1%	0.0%
Tunxis CC	3,976	1,994	3,934	2,055	-1.1%	3.0%
SYSTEM TOTAL	44,427	23,350	44,653	23,959	0.5%	2.6%



CONNECTICUT COMMUNITY COLLEGES
 COMBINED FUND ENROLLMENT
 FULL-TIME/PART-TIME
 FALL 2003

	<u>FULL-TIME</u>		<u>PART-TIME</u>		<u>TOTAL</u>		<u>PERCENT</u>	
	STUDENTS	FTE	STUDENTS	FTE	STUDENTS	FTE	Full-time	Part-time
Asnuntuck CC	456	404	1,020	330	1,476	734	30.9%	69.1%
Capital CC	848	728	2,533	1,066	3,381	1,795	25.1%	74.9%
Gateway CC	1,526	1,324	4,061	1,584	5,587	2,909	27.3%	72.7%
Housatonic CC	1,372	1,182	3,306	1,304	4,678	2,487	29.3%	70.7%
Manchester CC	2,238	1,955	3,479	1,294	5,717	3,249	39.1%	60.9%
Middlesex CC	752	651	1,648	593	2,400	1,245	31.3%	68.7%
Naugatuck Valley CC	1,936	1,693	3,219	1,211	5,155	2,903	37.6%	62.4%
Northwestern Ct. CC	510	444	1,033	330	1,543	775	33.1%	66.9%
Norwalk CC	1,947	1,752	4,100	1,526	6,047	3,278	32.2%	67.8%
Quinebaug Valley CC	510	438	1,061	383	1,571	821	32.5%	67.5%
Three Rivers CC	1,009	891	2,613	1,000	3,622	1,892	27.9%	72.1%
Tunxis CC	1,365	1,153	2,618	915	3,983	2,068	34.3%	65.7%
SYSTEM TOTAL	14,469	12,616	30,691	11,539	45,160	24,155	32.0%	68.0%

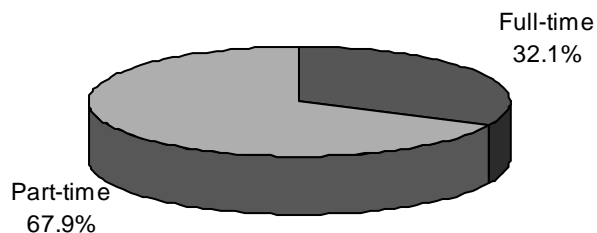
**FULL-TIME/PART-TIME
 FALL 2003 COMBINED FUND ENROLLMENT**



CONNECTICUT COMMUNITY COLLEGES
GENERAL FUND ENROLLMENT
FULL-TIME/PART-TIME
FALL 2003

	<u>FULL-TIME</u>		<u>PART-TIME</u>		<u>TOTAL</u>		<u>PERCENT</u>	
	STUDENTS	FTE	STUDENTS	FTE	STUDENTS	FTE	Full-time	Part-time
Asnuntuck CC	456	404	928	308	1,384	712	32.9%	67.1%
Capital CC	848	728	2,479	1,045	3,327	1,773	25.5%	74.5%
Gateway CC	1,526	1,324	4,001	1,556	5,527	2,881	27.6%	72.4%
Housatonic CC	1,372	1,182	3,306	1,304	4,678	2,487	29.3%	70.7%
Manchester CC	2,146	1,875	3,509	1,319	5,655	3,194	37.9%	62.1%
Middlesex CC	735	637	1,598	583	2,333	1,220	31.5%	68.5%
Naugatuck Valley CC	1,936	1,693	3,172	1,200	5,108	2,893	37.9%	62.1%
Northwestern Ct. CC	505	440	992	321	1,497	761	33.7%	66.3%
Norwalk CC	1,947	1,752	4,100	1,526	6,047	3,278	32.2%	67.8%
Quinebaug Valley CC	510	438	1,061	383	1,571	821	32.5%	67.5%
Three Rivers CC	1,009	891	2,583	994	3,592	1,886	28.1%	71.9%
Tunxis CC	1,365	1,153	2,569	902	3,934	2,055	34.7%	65.3%
SYSTEM TOTAL	14,355	12,517	30,298	11,442	44,653	23,959	32.1%	67.9%

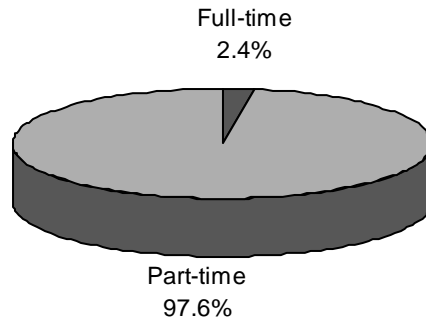
**FULL-TIME/PART-TIME
FALL 2003 GENERAL FUND ENROLLMENT**



CONNECTICUT COMMUNITY COLLEGES
EXTENSION FUND ENROLLMENT
FULL-TIME/PART-TIME
FALL 2003

	<u>FULL-TIME</u>		<u>PART-TIME</u>		<u>TOTAL</u>		<u>PERCENT</u>	
	STUDENTS	FTE	STUDENTS	FTE	STUDENTS	FTE	Full-time	Part-time
Asnuntuck CC	0	0	92	22	92	22	0.0%	100.0%
Capital CC	0	0	54	22	54	22	0.0%	100.0%
Gateway CC	0	0	60	28	60	28	0.0%	100.0%
Housatonic CC	0	0	0	0	0	0		
Manchester CC	0	0	258	56	258	56	0.0%	100.0%
Middlesex CC	17	15	52	10	69	25	24.6%	75.4%
Naugatuck Valley CC	0	0	47	11	47	11	0.0%	100.0%
Northwestern Ct. CC	0	0	56	14	56	14	0.0%	100.0%
Norwalk CC	0	0	0	0	0	0		
Quinebaug Valley CC	0	0	0	0	0	0		
Three Rivers CC	0	0	30	6	30	6	0.0%	100.0%
Tunxis CC	0	0	49	13	49	13	0.0%	100.0%
SYSTEM TOTAL	17	15	698	181	715	196	2.4%	97.6%

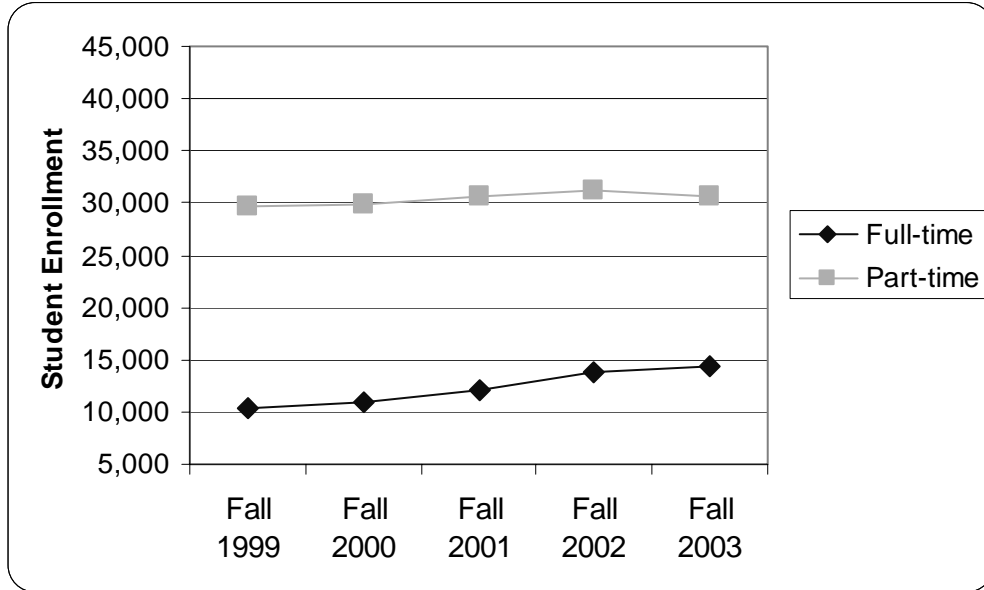
FULL-TIME/PART-TIME
FALL 2003 EXTENSION FUND ENROLLMENT



CONNECTICUT COMMUNITY COLLEGES
 COMBINED FUND STUDENT ENROLLMENT HISTORY
 FALL 1999 - FALL 2003

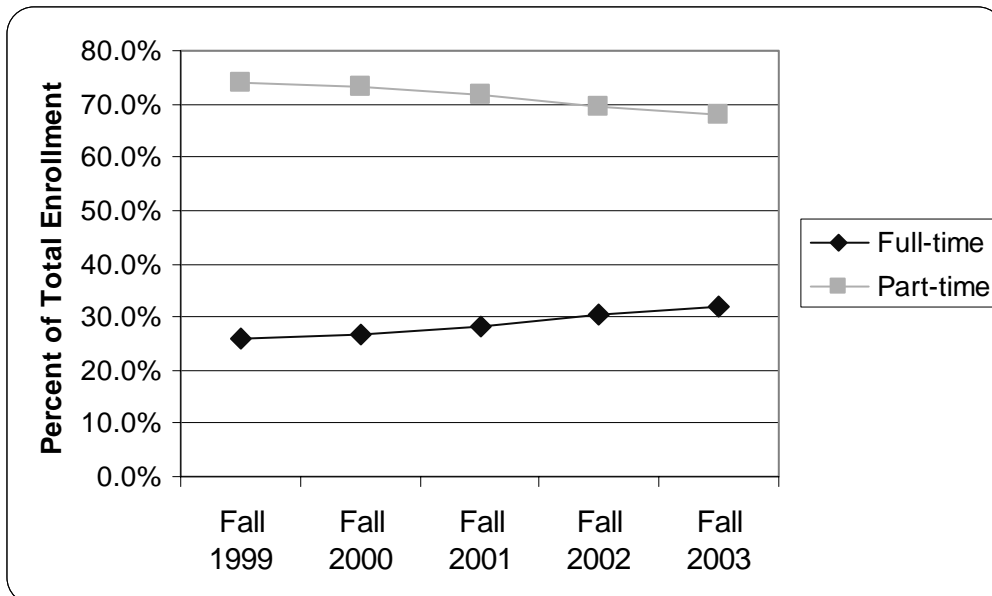
Student Enrollment

	Fall 1999	Fall 2000	Fall 2001	Fall 2002	Fall 2003
Full-time	10,369	10,887	12,044	13,715	14,469
Part-time	29,696	29,938	30,598	31,154	30,691
Total	40,065	40,825	42,642	44,869	45,160



Percent of Total Enrollment

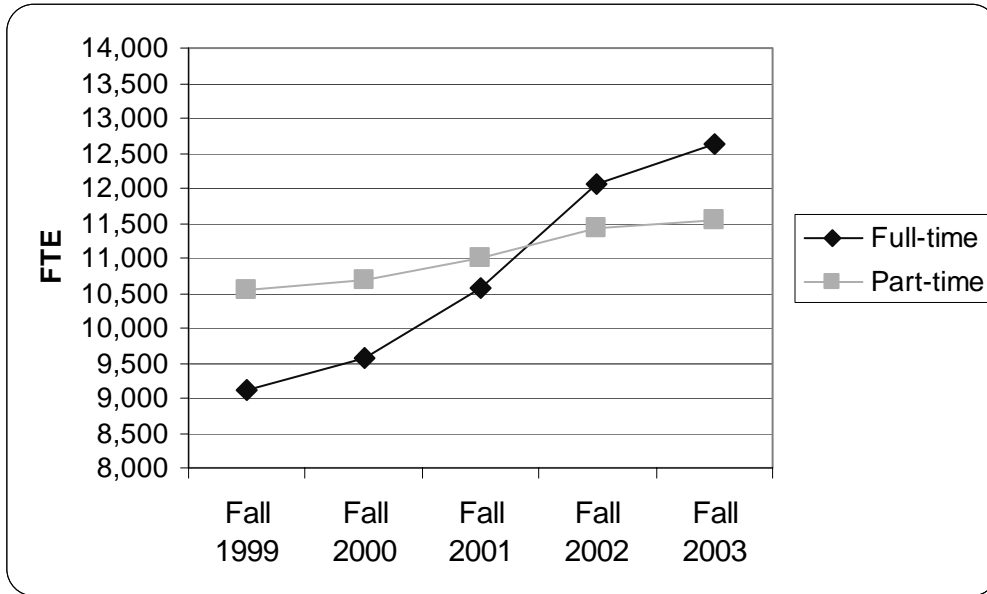
	Fall 1999	Fall 2000	Fall 2001	Fall 2002	Fall 2003
Full-time	25.9%	26.7%	28.2%	30.6%	32.0%
Part-time	74.1%	73.3%	71.8%	69.4%	68.0%
Total	100.0%	100.0%	100.0%	100.0%	100.0%



CONNECTICUT COMMUNITY COLLEGES
 COMBINED FUND FTE ENROLLMENT HISTORY
 FALL 1999 - FALL 2003

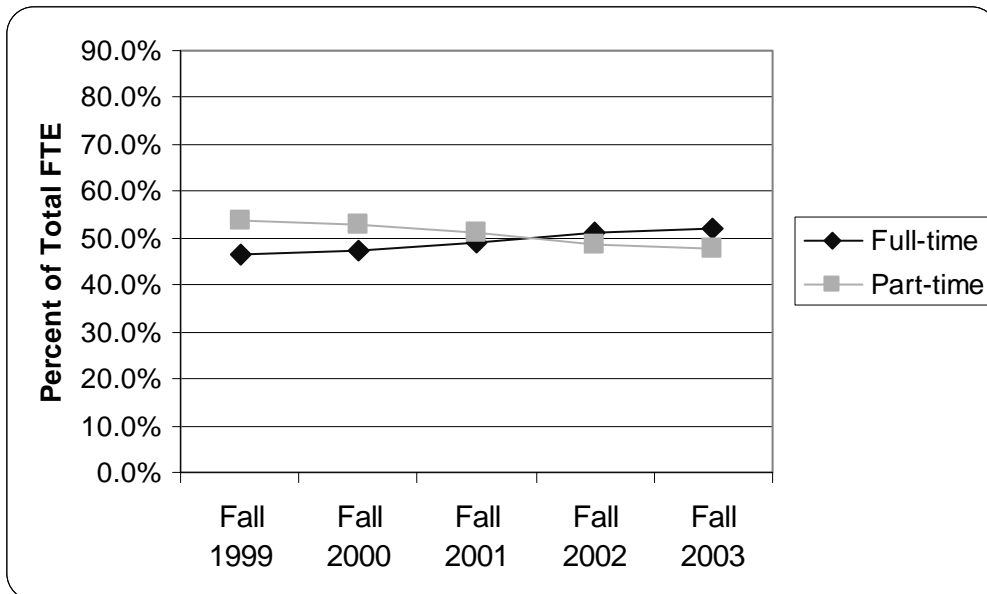
FTE Enrollment

	Fall 1999	Fall 2000	Fall 2001	Fall 2002	Fall 2003
Full-time	9,112	9,577	10,568	12,063	12,616
Part-time	10,544	10,680	11,000	11,422	11,539
Total	19,656	20,257	21,568	23,485	24,155



Percent of Total FTE

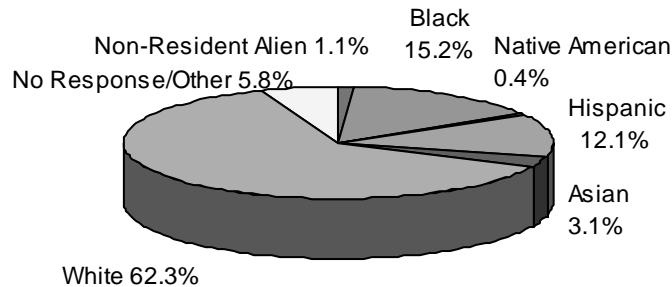
	Fall 1999	Fall 2000	Fall 2001	Fall 2002	Fall 2003
Full-time	46.4%	47.3%	49.0%	51.4%	52.2%
Part-time	53.6%	52.7%	51.0%	48.6%	47.8%
Total	100.0%	100.0%	100.0%	100.0%	100.0%



CONNECTICUT COMMUNITY COLLEGES
COMBINED FUND ENROLLMENT BY ETHNIC GROUP
FALL 2003

	NON-RESIDENT ALIEN	BLACK NON-HISPANIC	AMERICAN INDIAN OR ALASKAN NATIVE	ASIAN OR PACIFIC ISLANDER	HISPANIC	WHITE NON-HISPANIC	UNKNOWN
Asnuntuck CC	1	86	2	34	39	1,296	18
Capital CC	14	1,190	6	121	814	983	253
Gateway CC	58	1,391	15	162	726	2,876	359
Housatonic CC	56	1,264	10	135	1,006	1,951	256
Manchester CC	43	672	26	199	504	3,988	285
Middlesex CC	11	174	7	68	182	1,861	97
Naugatuck Valley CC	40	393	17	123	445	3,652	485
Northwestern Ct. CC	3	39	4	24	42	1,366	65
Norwalk CC	215	1,080	10	289	1,021	3,048	384
Quinebaug Valley CC	6	35	10	15	120	1,316	69
Three Rivers CC	13	277	66	105	218	2,724	219
Tunxis CC	39	257	14	114	330	3,094	135
SYSTEM TOTAL	499	6,858	187	1,389	5,447	28,155	2,625
	1.1%	15.2%	0.4%	3.1%	12.1%	62.3%	5.8%

ETHNIC DISTRIBUTION
FALL 2003 COMBINED FUND ENROLLMENT



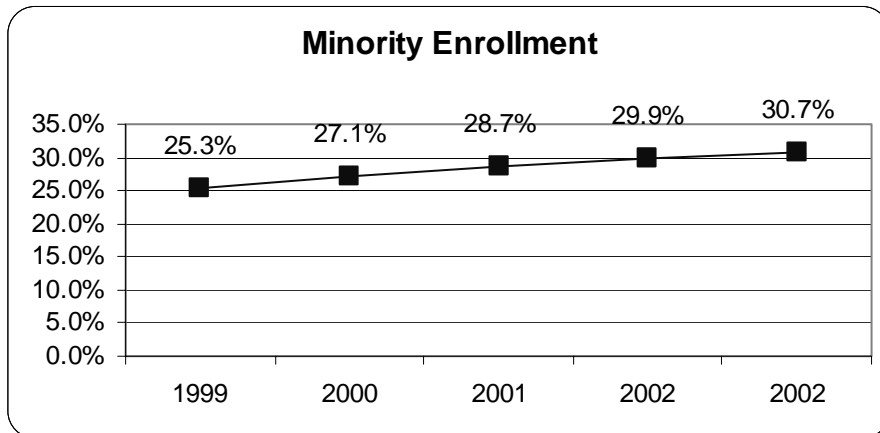
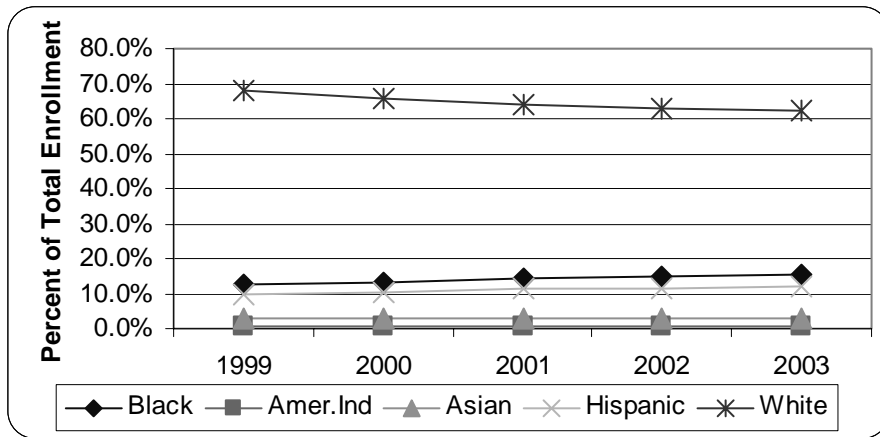
CONNECTICUT COMMUNITY COLLEGES
ENROLLMENT HISTORY BY ETHNICITY
FALL 1999 - FALL 2003

Enrollment

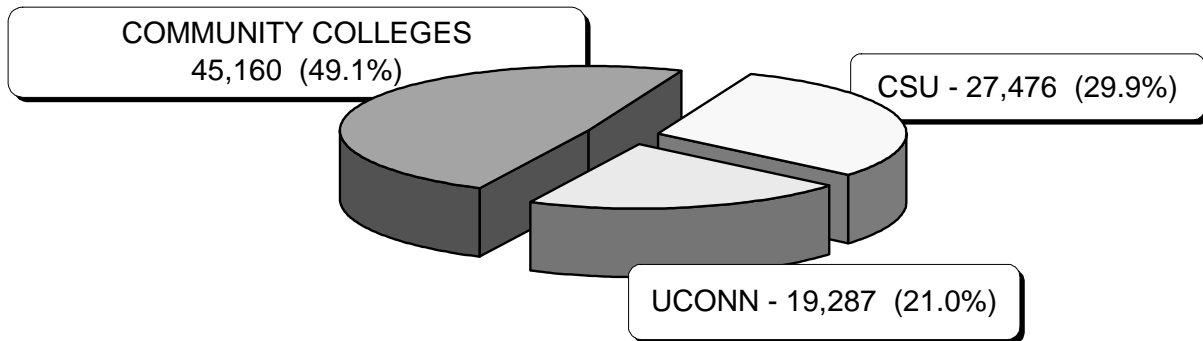
Year	Non-Res	Black	Amer.Ind	Asian	Hispanic	White	Unk	Total
1999	292	4,927	176	1,186	3,859	27,282	2,343	40,065
2000	293	5,405	135	1,269	4,274	26,897	2,552	40,825
2001	475	6,082	164	1,235	4,774	27,344	2,568	42,642
2002	543	6,677	205	1,375	5,157	28,124	2,788	44,869
2003	499	6,858	187	1,389	5,447	28,155	2,625	45,160

Percent of Total Enrollment

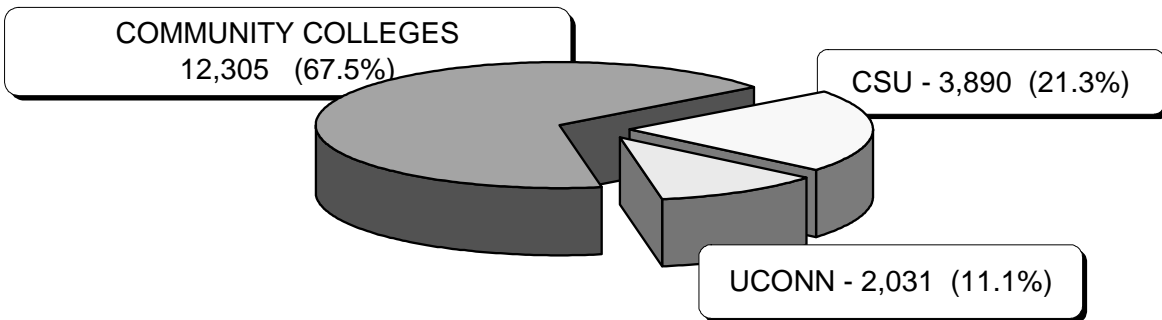
Year	Non-Res	Black	Amer.Ind	Asian	Hispanic	White	Unk
1999	0.7%	12.3%	0.4%	3.0%	9.6%	68.1%	5.8%
2000	0.7%	13.2%	0.3%	3.1%	10.5%	65.9%	6.3%
2001	1.1%	14.3%	0.4%	2.9%	11.2%	64.1%	6.0%
2002	1.2%	14.9%	0.5%	3.1%	11.5%	62.7%	6.2%
2003	1.1%	15.2%	0.4%	3.1%	12.1%	62.3%	5.8%



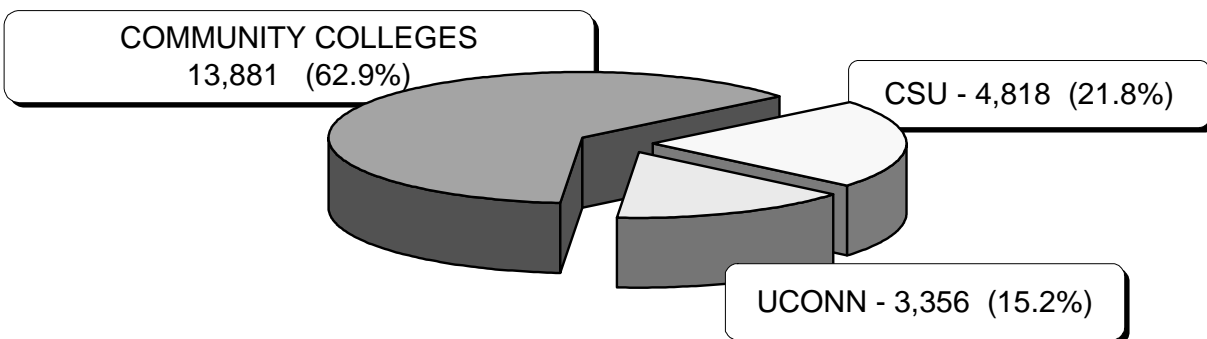
UNDERGRADUATES AT PUBLIC INSTITUTIONS FALL 2003 HEADCOUNT ENROLLMENT



UNDERGRADUATES AT PUBLIC INSTITUTIONS FALL 2003 AFRICAN AMERICAN & HISPANIC ENROLLMENT



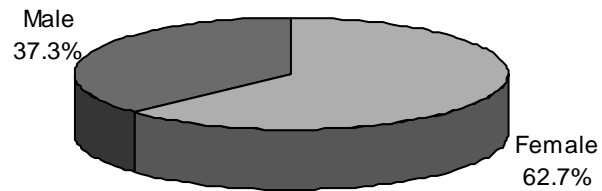
UNDERGRADUATES AT PUBLIC INSTITUTIONS FALL 2003 MINORITY ENROLLMENT



CONNECTICUT COMMUNITY COLLEGES
COMBINED FUND ENROLLMENT BY GENDER
FALL 2003

	FEMALE	MALE	PERCENT	
			Female	Male
Asnuntuck CC	877	599	59.4%	40.6%
Capital CC	2,419	962	71.5%	28.5%
Gateway CC	3,554	2,033	63.6%	36.4%
Housatonic CC	3,147	1,531	67.3%	32.7%
Manchester CC	3,230	2,487	56.5%	43.5%
Middlesex CC	1,488	912	62.0%	38.0%
Naugatuck Valley CC	3,024	2,131	58.7%	41.3%
Northwestern Ct. CC	1,010	533	65.5%	34.5%
Norwalk CC	3,746	2,301	61.9%	38.1%
Quinebaug Valley CC	1,073	498	68.3%	31.7%
Three Rivers CC	2,278	1,344	62.9%	37.1%
Tunxis CC	2,469	1,514	62.0%	38.0%
SYSTEM TOTAL	28,315	16,845	62.7%	37.3%

ENROLLMENT BY GENDER
Fall 2003



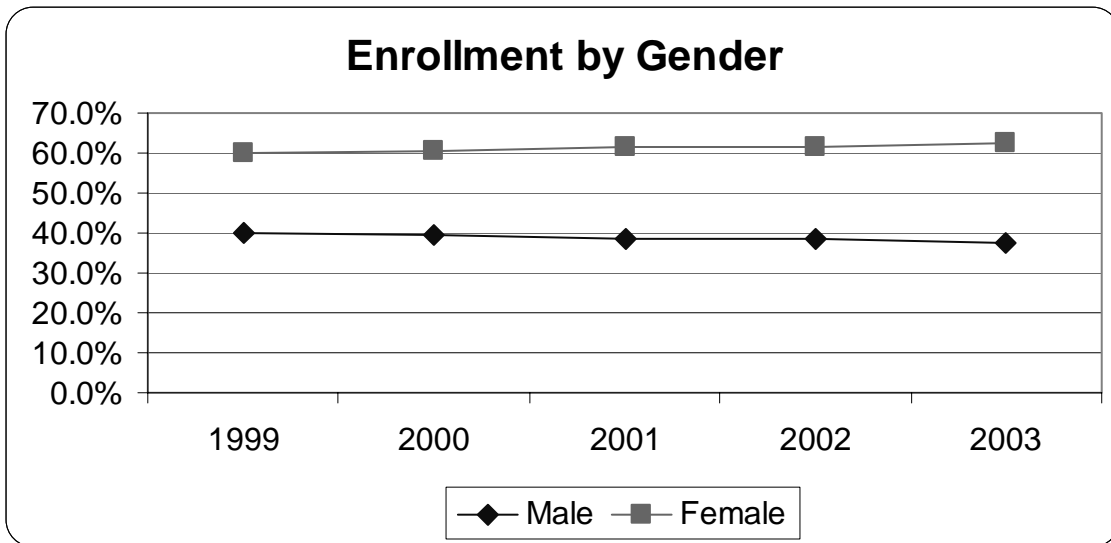
CONNECTICUT COMMUNITY COLLEGES
ENROLLMENT HISTORY BY GENDER
FALL 1999 - FALL 2003

Enrollment

Year	Male	Female	Total
1998	15,669	23,685	39,354
1999	15,933	24,132	40,065
2000	16,167	24,658	40,825
2001	16,485	26,157	42,642
2002	17,180	27,689	44,869
2003	16,845	28,315	45,160

Percent of Total

Year	Male	Female
1998	39.8%	60.2%
1999	39.8%	60.2%
2000	39.6%	60.4%
2001	38.7%	61.3%
2002	38.3%	61.7%
2003	37.3%	62.7%



CONNECTICUT COMMUNITY COLLEGES
COMBINED FUND AGE DISTRIBUTION
FALL 2003

FULL-TIME

	15-19	20-24	25-29	30-34	35-39	40-44	45-59	60+	Total
Asnuntuck CC	222	160	25	19	6	11	13	0	456
Capital CC	328	315	85	61	28	13	18	0	848
Gateway CC	607	587	133	85	56	16	37	5	1,526
Housatonic CC	603	502	112	61	44	21	26	3	1,372
Manchester CC	1,173	807	115	48	32	35	27	1	2,238
Middlesex CC	387	257	43	19	15	16	14	1	752
Naugatuck Valley CC	973	716	89	52	40	30	36	0	1,936
Northwestern Ct. CC	273	171	28	12	10	11	4	1	510
Norwalk CC	857	724	187	79	39	22	29	10	1,947
Quinebaug Valley CC	275	153	32	22	13	7	8	0	510
Three Rivers CC	477	336	83	43	32	20	18	0	1,009
Tunxis CC	692	489	94	37	21	18	14	0	1,365
SYSTEM TOTAL	6,867	5,217	1,026	538	336	220	244	21	14,469
	47.5%	36.1%	7.1%	3.7%	2.3%	1.5%	1.7%	0.1%	

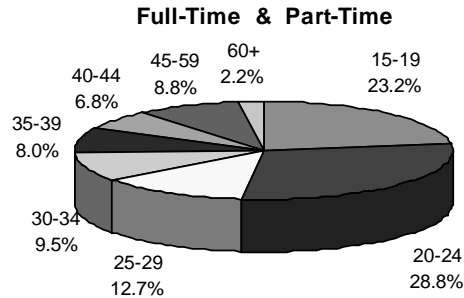
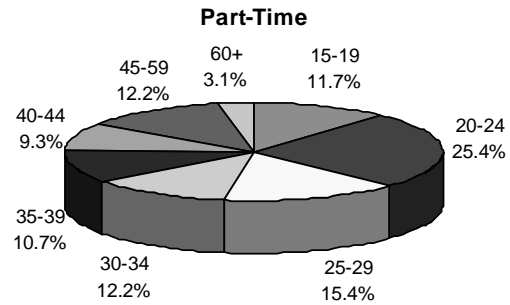
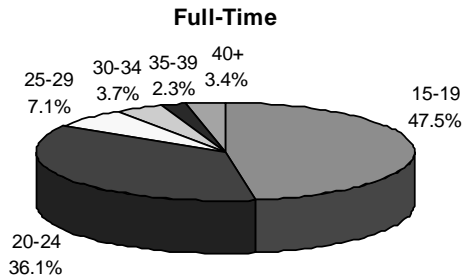
PART-TIME

	15-19	20-24	25-29	30-34	35-39	40-44	45-59	60+	Total
Asnuntuck CC	176	280	117	85	90	105	137	30	1,020
Capital CC	202	539	495	385	331	255	262	64	2,533
Gateway CC	522	929	649	530	432	382	493	124	4,061
Housatonic CC	370	895	531	436	350	257	367	100	3,306
Manchester CC	478	991	467	374	349	299	474	47	3,479
Middlesex CC	190	396	219	203	192	171	238	39	1,648
Naugatuck Valley CC	350	885	503	396	351	310	371	53	3,219
Northwestern Ct. CC	134	247	105	89	87	91	164	116	1,033
Norwalk CC	405	1,012	660	484	376	358	515	290	4,100
Quinebaug Valley CC	141	244	131	114	129	128	147	27	1,061
Three Rivers CC	326	608	453	342	310	275	275	24	2,613
Tunxis CC	301	762	387	310	285	232	295	46	2,618
SYSTEM TOTAL	3,595	7,788	4,717	3,748	3,282	2,863	3,738	960	30,691
	11.7%	25.4%	15.4%	12.2%	10.7%	9.3%	12.2%	3.1%	

CONNECTICUT COMMUNITY COLLEGES
COMBINED FUND AGE DISTRIBUTION
FALL 2003

FULL-TIME & PART-TIME

	15-19	20-24	25-29	30-34	35-39	40-44	45-59	60+	Total
Asnuntuck CC	398	440	142	104	96	116	150	30	1,476
Capital CC	530	854	580	446	359	268	280	64	3,381
Gateway CC	1,129	1,516	782	615	488	398	530	129	5,587
Housatonic CC	973	1,397	643	497	394	278	393	103	4,678
Manchester CC	1,651	1,798	582	422	381	334	501	48	5,717
Middlesex CC	577	653	262	222	207	187	252	40	2,400
Naugatuck Valley CC	1,323	1,601	592	448	391	340	407	53	5,155
Northwestern Ct. CC	407	418	133	101	97	102	168	117	1,543
Norwalk CC	1,262	1,736	847	563	415	380	544	300	6,047
Quinebaug Valley CC	416	397	163	136	142	135	155	27	1,571
Three Rivers CC	803	944	536	385	342	295	293	24	3,622
Tunxis CC	993	1,251	481	347	306	250	309	46	3,983
SYSTEM TOTAL	10,462	13,005	5,743	4,286	3,618	3,083	3,982	981	45,160
	23.2%	28.8%	12.7%	9.5%	8.0%	6.8%	8.8%	2.2%	

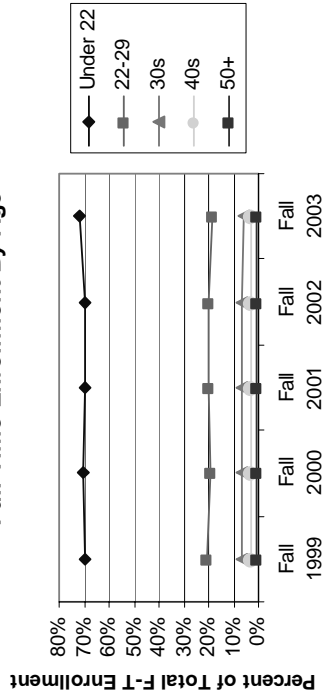


CONNECTICUT COMMUNITY COLLEGES
ENROLLMENT HISTORY BY AGE
FALL 2003

Percent of Total Full-Time Enrollment

	Fall 1999	Fall 2000	Fall 2001	Fall 2002	Fall 2003
Under 22	69.4%	70.4%	69.5%	69.6%	72.1%
22-29	20.5%	19.4%	20.0%	20.2%	18.5%
30s	6.4%	6.6%	6.8%	6.6%	6.0%
40s	2.7%	2.9%	2.8%	2.8%	2.6%
50+	1.0%	0.7%	0.8%	0.9%	0.7%
Total	100.0%	100.0%	100.0%	100.0%	100.0%

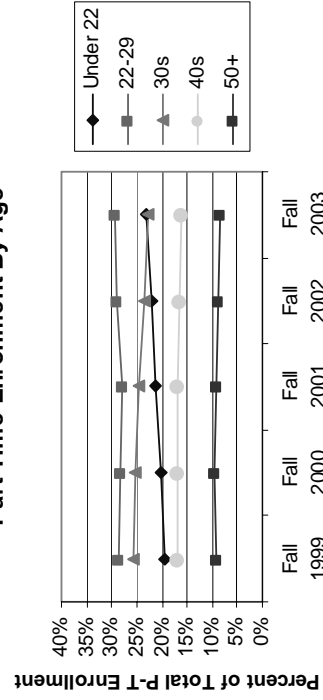
Full-Time Enrollment By Age



Percent of Total Part-Time Enrollment

	Fall 1999	Fall 2000	Fall 2001	Fall 2002	Fall 2003
Under 22	19.6%	20.1%	21.4%	22.1%	23.0%
22-29	28.5%	28.1%	27.9%	29.1%	29.5%
30s	25.8%	25.4%	24.8%	23.4%	22.9%
40s	17.0%	17.0%	16.7%	16.4%	16.1%
50+	9.2%	9.5%	9.2%	9.0%	8.5%
Total	100.0%	100.0%	100.0%	100.0%	100.0%

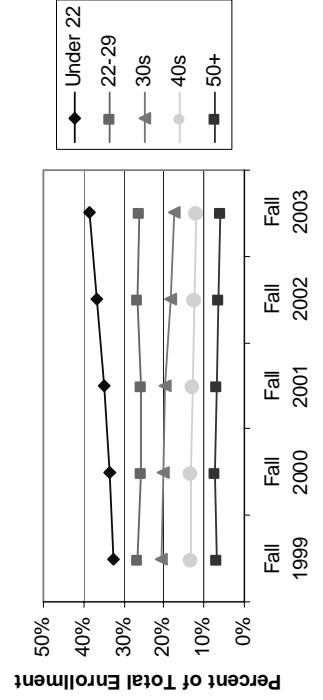
Part-Time Enrollment By Age



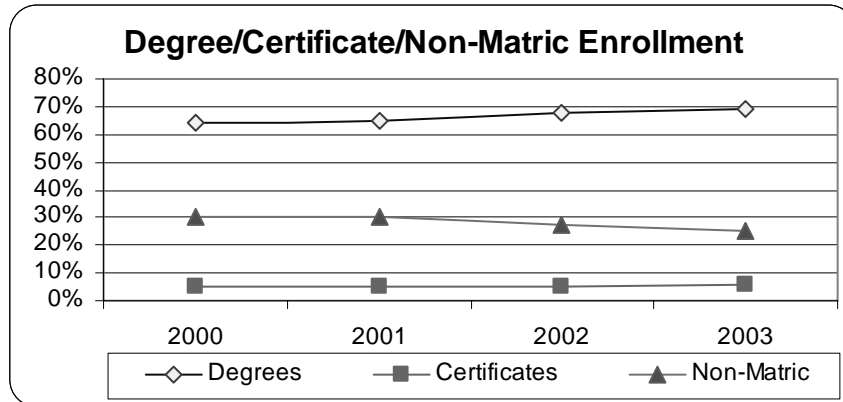
Percent of Total Enrollment

	Fall 1999	Fall 2000	Fall 2001	Fall 2002	Fall 2003
Under 22	32.5%	33.5%	35.0%	36.6%	38.7%
22-29	26.4%	25.8%	25.7%	26.4%	26.0%
30s	20.8%	20.4%	19.7%	18.3%	17.5%
40s	13.3%	13.2%	12.8%	12.3%	11.8%
50+	7.0%	7.1%	6.8%	6.5%	6.0%
Total	100.0%	100.0%	100.0%	100.0%	100.0%

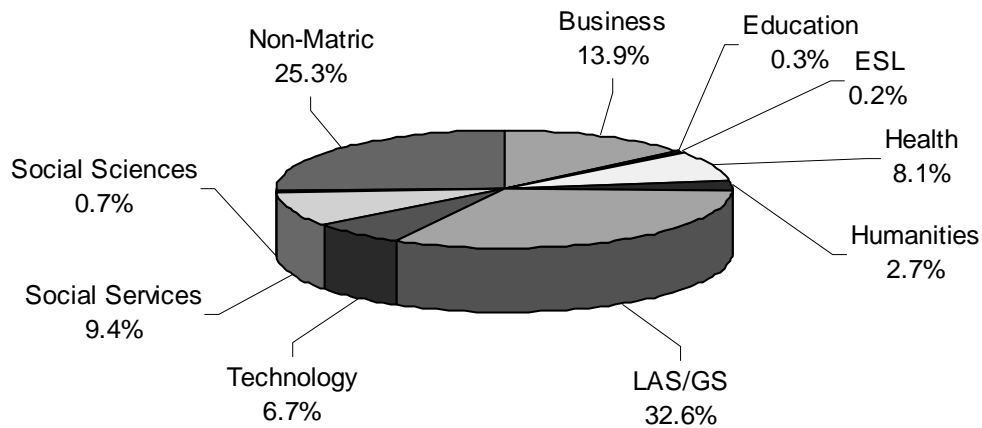
Total Enrollment By Age



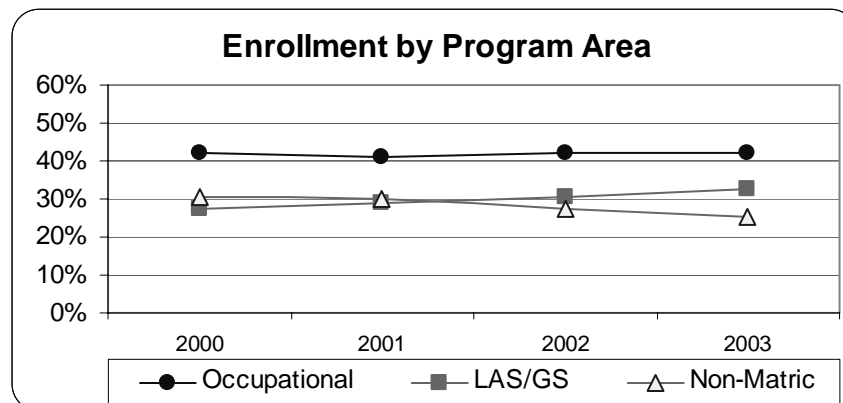
In Fall 2003, 31,206 students (69%) are enrolled in degree programs, 2,514 students (6%) are enrolled in certificate programs, and the remaining 11,440 students (25%) are not enrolled in a specific degree or certificate program. There is a 3% increase in degree program enrollments over last year and a 19% increase since 2000. There is a 7% increase in certificate program enrollments over last year and a 16% increase since 2000.



Fall 2003 Enrollment by Program Area



In the Fall of 2003, occupational programs account for 42.1% of all community college students. Liberal Arts and Sciences and General Studies programs account for an additional 32.6% of all community college students, and the remaining 25.3% of the students are not enrolled in a specific degree or certificate program. Among the occupational programs 13.9% of all community college students are enrolled in business programs, 8.1% in Health and Life Sciences programs, 6.7% in Science, Engineering, and Technology programs, 9.4% in Social and Public Service programs, and 3.9% in Humanities, Arts, and Communications, Social Sciences, Education and ESL.



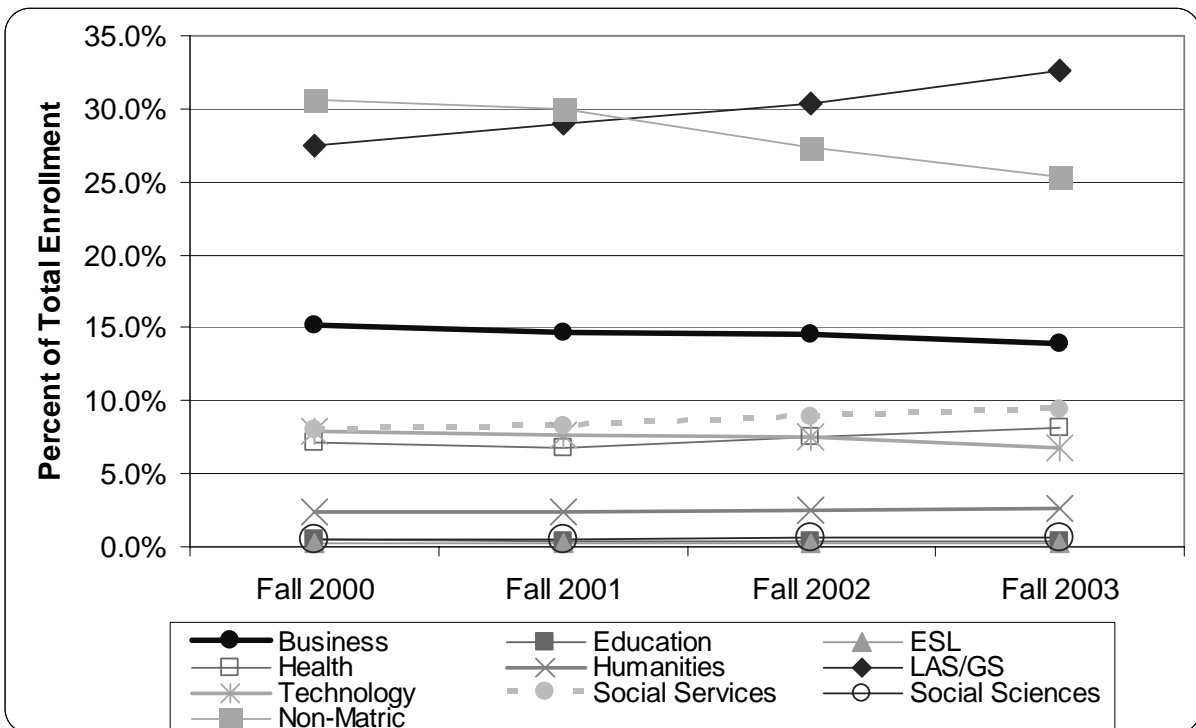
CONNECTICUT COMMUNITY COLLEGES
CREDIT ENROLLMENT HISTORY BY PROGRAM AREA
FALL 2003

Enrollment

Program Area	Fall 2000	Fall 2001	Fall 2002	Fall 2003
Business	6,178	6,266	6,521	6,284
Education	196	162	188	156
ESL	117	123	138	107
Health/Life Sciences	2,924	2,874	3,358	3,670
Humanities/Arts/Communications	962	1,015	1,148	1,198
Liberal Arts & General Studies	11,235	12,354	13,649	14,705
Science/Engineering/Technology	3,210	3,287	3,357	3,041
Social & Public Services	3,292	3,539	3,994	4,254
Social Sciences	228	230	265	305
Non-Matriculated	12,483	12,792	12,251	11,440
Total	40,825	42,642	44,869	45,160

Percent of Total Enrollment

Program Area	Fall 2000	Fall 2001	Fall 2002	Fall 2003
Business	15.1%	14.7%	14.5%	13.9%
Education	0.5%	0.4%	0.4%	0.3%
ESL	0.3%	0.3%	0.3%	0.2%
Health/Life Sciences	7.2%	6.7%	7.5%	8.1%
Humanities/Arts/Communications	2.4%	2.4%	2.6%	2.7%
Liberal Arts & General Studies	27.5%	29.0%	30.4%	32.6%
Science/Engineering/Technology	7.9%	7.7%	7.5%	6.7%
Social & Public Services	8.1%	8.3%	8.9%	9.4%
Social Sciences	0.6%	0.5%	0.6%	0.7%
Non-Matriculated	30.6%	30.0%	27.3%	25.3%
Total	100.0%	100.0%	100.0%	100.0%



CONNECTICUT COMMUNITY COLLEGES
CREDIT ENROLLMENT HISTORY BY PROGRAM AREA & GENDER
FALL 2003

Fall 2003 Credit Enrollment in Associate Degree Programs

Program Area	Female	%	Male	%	Total
Business	3,426	59.4%	2,345	40.6%	5,771
Education	127	91.4%	12	8.6%	139
Health/Life Sciences	2,311	82.8%	480	17.2%	2,791
Humanities/Arts/Communications	588	52.6%	530	47.4%	1,118
Liberal Arts & General Studies	10,034	68.4%	4,640	31.6%	14,674
Science/Engineering/Technology	523	18.8%	2,262	81.2%	2,785
Social & Public Services	2,531	68.5%	1,163	31.5%	3,694
Social Sciences	199	85.0%	35	15.0%	234
Total	19,739	63.3%	11,467	36.7%	31,206

Fall 2003 Credit Enrollment in Certificate Programs

Program Area	Female	%	Male	%	Total
Business	366	71.3%	147	28.7%	513
Education	16	94.1%	1	5.9%	17
ESL	77	72.0%	30	28.0%	107
Health/Life Sciences	742	84.4%	137	15.6%	879
Humanities/Arts/Communications	53	66.3%	27	33.8%	80
Liberal Arts & General Studies	26	83.9%	5	16.1%	31
Science/Engineering/Technology	57	22.3%	199	77.7%	256
Social & Public Services	415	74.1%	145	25.9%	560
Social Sciences	56	78.9%	15	21.1%	71
Total	1,808	71.9%	706	28.1%	2,514

Fall 2003 Credit Enrollment in Associate Degree and Certificate Programs

Program Area	Female	%	Male	%	Total
Business	3,792	60.3%	2,492	39.7%	6,284
Education	143	91.7%	13	8.3%	156
ESL	77	72.0%	30	28.0%	107
Health/Life Sciences	3,053	83.2%	617	16.8%	3,670
Humanities/Arts/Communications	641	53.5%	557	46.5%	1,198
Liberal Arts & General Studies	10,060	68.4%	4,645	31.6%	14,705
Science/Engineering/Technology	580	19.1%	2,461	80.9%	3,041
Social & Public Services	2,946	69.3%	1,308	30.7%	4,254
Social Sciences	255	83.6%	50	16.4%	305
Non-Matriculated	6,768	59.2%	4,672	40.8%	11,440
Total	28,315	62.7%	16,845	37.3%	45,160

CONNECTICUT COMMUNITY COLLEGES
CREDIT ENROLLMENT BY PROGRAM AREA & ETHNICITY
FALL 2003

Fall 2003 Credit Enrollment in Associate Degree Programs

Program Area	Non-Res.	%	Black	%	Amer. Ind.	%	Asian	%	Hispanic	%	White	%	Unk	%	Total
Business	140	2.4%	1,013	17.6%	29	0.5%	230	4.0%	834	14.5%	3,220	55.8%	305	5.3%	5,771
Education	2	1.4%	22	15.8%	1	0.7%	2	1.4%	16	11.5%	89	64.0%	7	5.0%	139
Health/Life Sciences	26	0.9%	545	19.5%	11	0.4%	58	2.1%	311	11.1%	1,696	60.8%	144	5.2%	2,791
Humanities/Arts/Communications	8	0.7%	115	10.3%	3	0.3%	24	2.1%	119	10.6%	790	70.7%	59	5.3%	1,118
Liberal Arts & General Studies	140	1.0%	2,581	17.6%	62	0.4%	425	2.9%	1,948	13.3%	8,690	59.2%	828	5.6%	14,674
Science/Engineering/Technology	45	1.6%	331	11.9%	13	0.5%	121	4.3%	325	11.7%	1,763	63.3%	187	6.7%	2,785
Social & Public Services	18	0.5%	626	16.9%	10	0.3%	39	1.1%	582	15.8%	2,239	60.6%	180	4.9%	3,694
Social Sciences	9	3.8%	39	16.7%		0.0%	1	0.4%	25	10.7%	147	62.8%	13	5.6%	234
Total	388	1.2%	5,272	16.9%	129	0.4%	900	2.9%	4,160	13.3%	18,634	59.7%	1,723	5.5%	31,206

Fall 2003 Credit Enrollment in Certificate Programs

Program Area	Non-Res.	%	Black	%	Amer. Ind.	%	Asian	%	Hispanic	%	White	%	Unk	%	Total
Business	1	0.2%	64	12.5%	7	1.4%	27	5.3%	74	14.4%	316	61.6%	24	4.7%	513
Education	1	5.9%	4	23.5%		0.0%	1	5.9%	1	5.9%	9	52.9%	1	5.9%	17
ESL	11	10.3%	6	5.6%		0.0%	6	5.6%	34	31.8%	44	41.1%	6	5.6%	107
Health/Life Sciences	7	0.8%	223	25.4%	4	0.5%	21	2.4%	89	10.1%	494	56.2%	41	4.7%	879
Humanities/Arts/Communications	1	1.3%	5	6.3%		0.0%	1	1.3%	4	5.0%	63	78.8%	6	7.5%	80
Liberal Arts & General Studies		0.0%		0.0%	1	3.2%		0.0%	4	12.9%	26	83.9%		0.0%	31
Science/Engineering/Technology	2	0.8%	19	7.4%	1	0.4%	10	3.9%	27	10.5%	177	69.1%	20	7.8%	256
Social & Public Services	3	0.5%	113	20.2%	2	0.4%	8	1.4%	80	14.3%	336	60.0%	18	3.2%	560
Social Sciences		0.0%	1	1.4%	1	1.4%		0.0%	4	5.6%	56	78.9%	9	12.7%	71
Total	26	1.0%	435	17.3%	16	0.6%	74	2.9%	317	12.6%	1,521	60.5%	125	5.0%	2,514

Fall 2003 Credit Enrollment in Associate Degree and Certificate Programs

Program Area	Non-Res.	%	Black	%	Amer. Ind.	%	Asian	%	Hispanic	%	White	%	Unk	%	Total
Business	141	2.2%	1,077	17.1%	36	0.6%	257	4.1%	908	14.4%	3,536	56.3%	329	5.2%	6,284
Education	3	1.9%	26	16.7%	1	0.6%	3	1.9%	17	10.9%	98	62.8%	8	5.1%	156
ESL	11	10.3%	6	5.6%		0.0%	6	5.6%	34	31.8%	44	41.1%	6	5.6%	107
Health/Life Sciences	33	0.9%	768	20.9%	15	0.4%	79	2.2%	400	10.9%	2,190	59.7%	185	5.0%	3,670
Humanities/Arts/Communications	9	0.8%	120	10.0%	3	0.3%	25	2.1%	123	10.3%	853	71.2%	65	5.4%	1,198
Liberal Arts & General Studies	140	1.0%	2,581	17.6%	63	0.4%	425	2.9%	1,952	13.3%	8,716	59.3%	828	5.6%	14,705
Science/Engineering/Technology	47	1.5%	350	11.5%	14	0.5%	131	4.3%	352	11.6%	1,940	63.8%	207	6.8%	3,041
Social & Public Services	21	0.5%	739	17.4%	12	0.3%	47	1.1%	662	15.6%	2,575	60.5%	198	4.7%	4,254
Social Sciences	9	3.0%	40	13.1%	1	0.3%	1	0.3%	29	9.5%	203	66.6%	22	7.2%	305
Non-Matriculated	85	0.7%	1,151	10.1%	42	0.4%	415	3.6%	970	8.5%	8,000	69.9%	777	6.8%	11,440
Total	499	1.1%	6,858	15.2%	187	0.4%	1,389	3.1%	5,447	12.1%	28,155	62.3%	2,625	5.8%	45,160

CONNECTICUT COMMUNITY COLLEGES
CREDIT ENROLLMENT BY ASSOCIATE DEGREE PROGRAM AREA
FALL 2003

Program Area	ASCC	CACC	GWCC	HOCC	MACC	MXCC	NVCC	NWCC	NKCC	QVCC	TRCC	TXCC	TOTAL
Business													
Accounting	46	87		196	310	57	98	13	172	55	126	22	1,182
Business Admin/Management	112	96	347	420	168	102	258	112	267	74	244	397	2,597
Business Information & DP	30	168	174	126	98	58			60			144	858
Business Office Technology	14	26	118	35	78	17	40	2	70	27	38	83	548
Hospitality Services Management			19		24		26		42		35		146
Marketing			51		31	25	46		240		42	5	440
Business Total	202	377	709	777	709	259	468	127	851	156	485	651	5,771
Education													
Teacher Asst/Special Education			37		102								139
Education Total	0	0	37	0	102	0	0	0	0	0	0	0	139
Health/Life Sciences													0
Allied Health		106	151	124	117	78	81	156	21	105		74	1,013
Mental Health/Human Services	43	5	174	182	75	60	192	34	75	80	81	121	1,122
Nursing		226	1				165		136		128		656
Health/Life Sciences Total	43	337	326	306	192	138	438	190	232	185	209	195	2,791
Humanities/Arts/Communications													
Communications					113	9			42				164
Fine Arts/Visual & Performing Arts			45	52	53	43	118	88		76		61	536
Graphic Design	5			111	124		66					112	418
Humanities/Arts/Comm. Total	5	0	45	163	290	52	184	88	42	76	0	173	1,118
Liberal Arts & General Studies													
General Studies	315	1	1,549	1,620	1,311	608	910	177	1,213	305	1,191	762	9,962
Liberal Arts & Sciences	64	1,450	95	345	323	33	825	136	498	364	363	216	4,712
Liberal Arts & General Studies Total	379	1,451	1,644	1,965	1,634	641	1,735	313	1,711	669	1,554	978	14,674

CREDIT ENROLLMENT BY ASSOCIATE DEGREE PROGRAM AREA (continued)

Program Area	ASCC	CACC	GWCC	HOCC	MACC	MXCC	NVCC	NWCC	NKCC	QVCC	TRCC	TXCC	TOTAL
Science/Engineering/Technology													
Architectural/Civil Engineering Tech		23							114		18		155
Communications Technologies	31					50							81
Electrical/Computer Eng Tech		17	141		23		294		12		82		569
Electromech/Biomedical Eng Tech			19					69					88
Engineering Science	10	7	47	10	62	13	5	5	63	14	8	26	270
Environmental Technologies					4	28	41			6	20		93
Industrial Production Technologies	2		21				28			93	18		75
Information Technology					174				149		129		545
Manufacturing Engineering					7								7
Mechanical Engineering Tech		3	134						1		49		187
Mechanics and Repairers			6	2			87			4			99
Precision Production			16								51		67
Science Technologies		5	13		17		63	7			28		133
Technological Studies	20	2	12	14		10	136	6	156	1	21	38	416
Science/Engineering/Tech. Total	63	57	409	26	287	101	654	87	495	118	424	64	2,785
Social & Public Services													
Criminal Justice & Corrections	52			278	242	72	191	59	145		134	291	1,464
Early Childhood Education	56	102	252	291	41	54	173	47	279		162	119	1,576
Fire Technology		37	5				25		24		25		116
Parks, Recreation & Leisure					61			12	28				101
Public Admin/Social Services		159	44		164		38		30		2		437
Social & Public Services Total	108	298	301	569	508	126	427	118	506	0	323	410	3,694
Social Sciences													
Paralegal/Legal Assistant					106		65	1	35				207
Social Sciences, Other							27						27
Social Sciences Total	0	0	0	0	106	0	92	1	35	0	0	0	234
Grand Total	800	2,520	3,471	3,806	3,828	1,317	3,998	924	3,872	1,204	2,995	2,471	31,206

CONNECTICUT COMMUNITY COLLEGES
CREDIT ENROLLMENT BY CERTIFICATE PROGRAM AREA
FALL 2003

Program Area	ASCC	CACC	GWCC	HOCC	MACC	MXCC	NVCC	NWCC	NKCC	QVCC	TRCC	TXCC	TOTAL
Business													
Accounting	3	2		16	9	7	3			2	4	24	70
Business Admin/Management	5	2	20	1	25	4	7	1		14	3	15	97
Business Information & DP	6	11		22	15	1	1	6	9		7	30	107
Business Office Technology		1	31	30	20	5	7	3	54	33	8	23	215
Hospitality Services Management											4		4
Marketing		1	4		3		2				3	7	20
Business Total	14	17	55	69	72	17	19	10	63	49	29	99	513
Education													
Teacher Asst/Special Education			6		11								17
Education Total	0	0	6	0	11	0	0	0	0	0	0	0	17
ESL													
English as a Second Language				21					59			27	107
ESL Total	0	0	0	21	0	0	0	0	59	0	0	27	107
Health/Life Sciences													
Allied Health		35	500		19	6	2	86	1	68		31	748
Mental Health/Human Services	2	1	33	42	4	5	13	1	19		2	9	131
Health/Life Sciences Total	2	36	533	42	23	11	15	87	20	68	2	40	879
Humanities/Arts/Communications													
Communications					1						1	14	16
Fine Arts/Visual & Performing Arts							4			13	1		18
Graphic Design				9	1			9	13		6	8	46
Humanities/Arts/Comm. Total	0	0	0	9	2	0	4	9	13	13	8	22	80
Liberal Arts & General Studies													
Liberal Arts & Sciences										18	13		31
Liberal Arts & General Studies Total	0	0	0	0	0	0	0	0	0	18	13	0	31

CREDIT ENROLLMENT BY CERTIFICATE PROGRAM AREA (continued)

Program Area	ASCC	CACC	GWCC	HOCC	MACC	MXCC	NVCC	NWCC	NKCC	QVCC	TRCC	TXCC	TOTAL
Science/Engineering/Technology													
Architectural/Civil Engineering Tech									1				1
Communications Technologies						6							7
Electrical/Computer Eng Tech		3						2			5		28
Electromech/Biomedical Eng Tech								6					6
Industrial Production Technologies										2			5
Information Technology			15		22				7	8			52
Mechanical Engineering Tech		1	21								17		39
Mechanics and Repairers			13				4						17
Precision Production			15				4				4		23
Science Technologies					6		17						23
Technological Studies	3		13	1		7	7	1	13		1	9	55
Science/Engineering/Tech. Total	3	4	77	1	28	13	54	9	21	10	27	9	256
Social & Public Services													
Criminal Justice & Corrections				21	22		3				3	28	77
Early Childhood Education	11	66	54	64		3	7	1	36		14	24	280
Parks, Recreation & Leisure							3	5	9				17
Public Admin/Social Services		8	34		54		7		55		28		186
Social & Public Services Total	11	74	88	85	76	3	20	6	100	0	45	52	560
Social Sciences													
Paralegal/Legal Assistant					23		12		18				53
Social Sciences, Other									18				18
Social Sciences Total	0	0	0	0	23	0	12	0	36	0	0	0	71
Grand Total	30	131	759	227	235	44	124	121	312	158	124	249	2,514

CONNECTICUT COMMUNITY COLLEGES
CREDIT ENROLLMENT BY ASSOCIATE DEGREE & CERTIFICATE PROGRAM AREA
FALL 2003

Program Area	ASCC	CACC	GWCC	HOCC	MACC	MXCC	NVCC	NWCC	NKCC	QVCC	TRCC	TXCC	TOTAL
Business													
Accounting	49	89		212	319	64	101	13	172	57	130	46	1,252
Business Admin/Management	117	98	367	421	193	106	265	113	267	88	247	412	2,694
Business Information & DP	36	179	174	148	113	59		6	69		7	174	965
Business Office Technology	14	27	149	65	98	22	47	5	124	60	46	106	763
Hospitality Services Management			19		24		26		42		39		150
Marketing		1	55		34	25	48		240		45	12	460
Business Total	216	394	764	846	781	276	487	137	914	205	514	750	6,284
Education													
Teacher Asst/Special Education			43		113								156
Education Total	0	0	43	0	113	0	0	0	0	0	0	0	156
ESL													
English as a Second Language				21					59			27	107
ESL Total	0	0	0	21	0	0	0	0	59	0	0	27	107
Health/Life Sciences													
Allied Health		141	651	124	136	84	83	242	22	173		105	1,761
Mental Health/Human Services	45	6	207	224	79	65	205	35	94	80	83	130	1,253
Nursing		226	1				165		136		128		656
Health/Life Sciences Total	45	373	859	348	215	149	453	277	252	253	211	235	3,670
Humanities/Arts/Communications													
Communications					114	9			42		1	14	180
Fine Arts/Visual & Performing Arts			45	52	53	43	122	88		89	1	61	554
Graphic Design	5			120	125		66	9	13		6	120	464
Humanities/Arts/Comm. Total	5	0	45	172	292	52	188	97	55	89	8	195	1,198
Liberal Arts & General Studies													
General Studies	315	1	1,549	1,620	1,311	608	910	177	1,213	305	1,191	762	9,962
Liberal Arts & Sciences	64	1,450	95	345	323	33	825	136	498	382	376	216	4,743
Liberal Arts & General Studies Total	379	1,451	1,644	1,965	1,634	641	1,735	313	1,711	687	1,567	978	14,705

CREDIT ENROLLMENT BY ASSOCIATE DEGREE & CERTIFICATE PROGRAM AREA (continued)

Program Area	ASCC	CACC	GWCC	HOCC	MACC	MXCC	NVCC	NWCC	NKCC	QVCC	TRCC	TXCC	TOTAL
Science/Engineering/Technology													
Architectural/Civil Engineering Tech		23							115		18		156
Communications Technologies	31					56	1						88
Electrical/Computer Eng Tech		20	141		23		312	2	12		87		597
Electromech/Biomedical Eng Tech			19					75					94
Engineering Science	10	7	47	10	62	13	5	5	63	14	8	26	270
Environmental Technologies					4	28	41				20		93
Industrial Production Technologies	2		21				31			8	18		80
Information Technology			15		196				156	101	129		597
Manufacturing Engineering					7								7
Mechanical Engineering Tech		4	155						1		66		226
Mechanics and Repairers			19	2			91			4			116
Precision Production			31				4				55		90
Science Technologies		5	13		23		80	7			28		156
Technological Studies	23	2	25	15		17	143	7	169	1	22	47	471
Science/Engineering/Tech Total	66	61	486	27	315	114	708	96	516	128	451	73	3,041
Social & Public Services													
Criminal Justice & Corrections	52			299	264	72	194	59	145		137	319	1,541
Early Childhood Education	67	168	306	355	41	57	180	48	315		176	143	1,856
Fire Technology		37	5				25		24		25		116
Parks, Recreation & Leisure					61		3	17	37				118
Public Admin/Social Services		167	78		218		45		85		30		623
Social & Public Services Total	119	372	389	654	584	129	447	124	606	0	368	462	4,254
Social Sciences													
Paralegal/Legal Assistant					129		77	1	53				260
Social Sciences, Other							27		18				45
Social Sciences Total	0	0	0	0	129	0	104	1	71	0	0	0	305
Non-matriculated													
Non-matriculated Total	646	730	1,357	645	1,654	1,039	1,033	498	1,863	209	503	1,263	11,440
Grand Total	1,476	3,381	5,587	4,678	5,717	2,400	5,155	1,543	6,047	1,571	3,622	3,983	45,160

