



Education That Works For a Lifetime

Fall 2005 Credit Enrollment Report

~~~~~  
Mr. Dennis G. Jones & Dr. Corby A. Coperthwaite  
Office of Planning, Research and Assessment  
Board of Trustees  
Connecticut Community-Technical Colleges  
61 Woodland Street  
Hartford, Connecticut 06105

Phone: (860)244-7604  
Fax: (860)566-1308  
CCoperthwaite@commnet.edu

~~~~~

Contents

Fall 2005 Credit Enrollment Introduction	2
Headcount and FTE Enrollment History	3
Combined Fund FTE Enrollment – Fall 2004 & Fall 2005	4
General Fund FTE Enrollment – Fall 2004 & Fall 2005	5
Combined Fund Enrollment – Full-time/Part-time	6
General Fund Enrollment – Full-time/Part-time	7
Extension Fund Enrollment – Full-time/Part-time	8
Combined Fund Student Enrollment History	9
Combined Fund FTE Enrollment History	10
Combined Fund Enrollment by Ethnic Group	11
Enrollment History by Ethnicity	12
Undergraduates at Public Institutions	13
Combined Fund Enrollment by Gender	14
Enrollment History by Gender	15
Combined Fund Age Distribution	16
Enrollment History by Age	18
Credit Enrollment by Program Area	19
Credit Enrollment History by Program Area	20
Credit Enrollment by Program Area and Gender	21
Credit Enrollment by Program Area and Ethnicity	22
Credit Enrollment by Associate Degree Program Area	23
Credit Enrollment by Certificate Program Area	25
Credit Enrollment by Associate Degree & Certificate Program Area	27
Geographic Distribution	29

Introduction

In the Fall of 2005, there are 46,227 students enrolled in Connecticut community colleges. This represents a 1.1% increase over Fall 2004. Enrollment is at its highest level. This Fall is also a record-breaking semester with respect to FTE. Our colleges are serving 25,743 Full-time Equivalent Students, which is the largest number ever. As compared to Fall 2004, General Fund headcount enrollment has increased by 1.3% and General Fund FTE enrollment has increased by 2.2%.

In the Fall 2005 semester, 64.6% of all community college students are part-time, and 35.4% are full-time. As a percent of total enrollment, full-time attendance has increased by 7.2% since Fall 2001, while part-time attendance has decreased by 7.2%. From 1998 to 2001, part-time students generated more FTE than full-time students. This trend changed in 2002 and as of this Fall, full-time students account for 55.2% of the total FTE generated.

This Fall, 14,770 minority students make up 32% of the student body (28.4% are Black and Hispanic) – a 20.5% increase in minority enrollment since 2001. The system's gender composition has remained relatively consistent over the past five years. This Fall, 63.1% of the student body is female and 36.9% is male.

The average age of the student population is 28; 21 for full-time students and 32 for part-timers. Full-time enrollment continues to increase and these are generally the more "traditional age" college students; 74.3% of them are under the age of 22. Overall 42.1% of our students are under the age of 22. This represents a 30.5% increase since 2001 and the largest proportion of our student body.

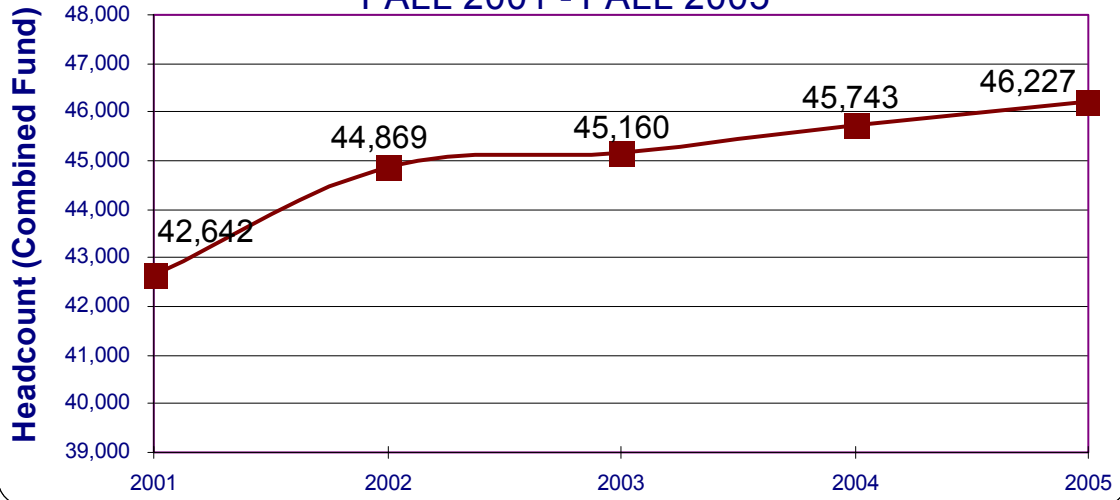
In the Fall of 2005, 44% of all community college students are enrolled in occupational programs. Liberal Arts and Sciences and General Studies programs account for an additional 35.1% and the remaining 20.9% of the students are not enrolled in a specific degree or certificate program. Over the last five years, among specific programs, Liberal Arts and General Studies have seen the largest growth; up 31.4% since Fall 2001.

The most popular programs among both minority and non-minority students are Liberal Arts/General Studies, Business and Social/Public Services.

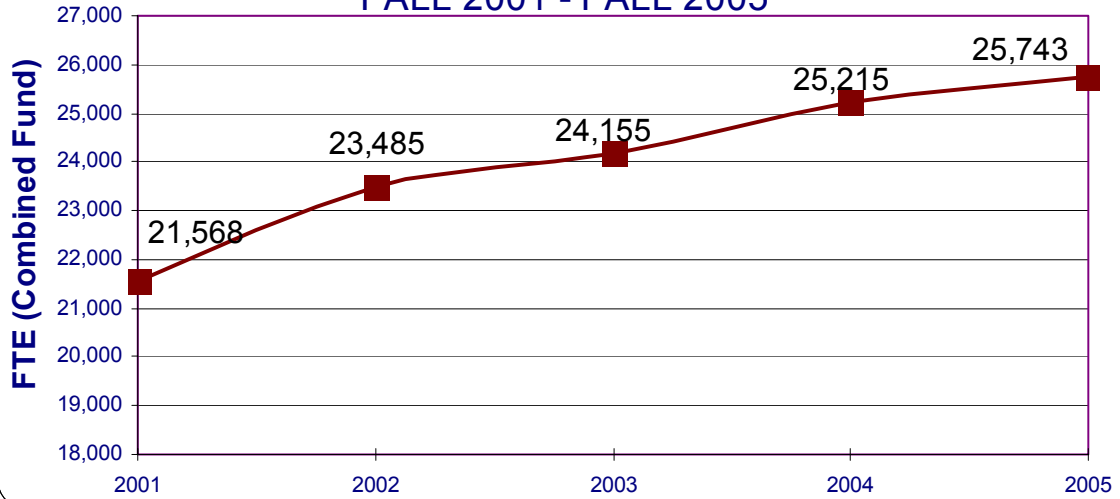
The most popular programs among female students are Liberal Arts/General Studies, Business and Health/Life Sciences. The popular programs among males are Liberal Arts/General Studies, Business and Science/Engineering/Technology.

Our credit students come from all over the state of Connecticut and represent 49.3% of the total undergraduate student enrollment in public higher education. Our students reside in all 169 towns (see the map on page 29).

CONNECTICUT COMMUNITY COLLEGES FALL 2001 - FALL 2005

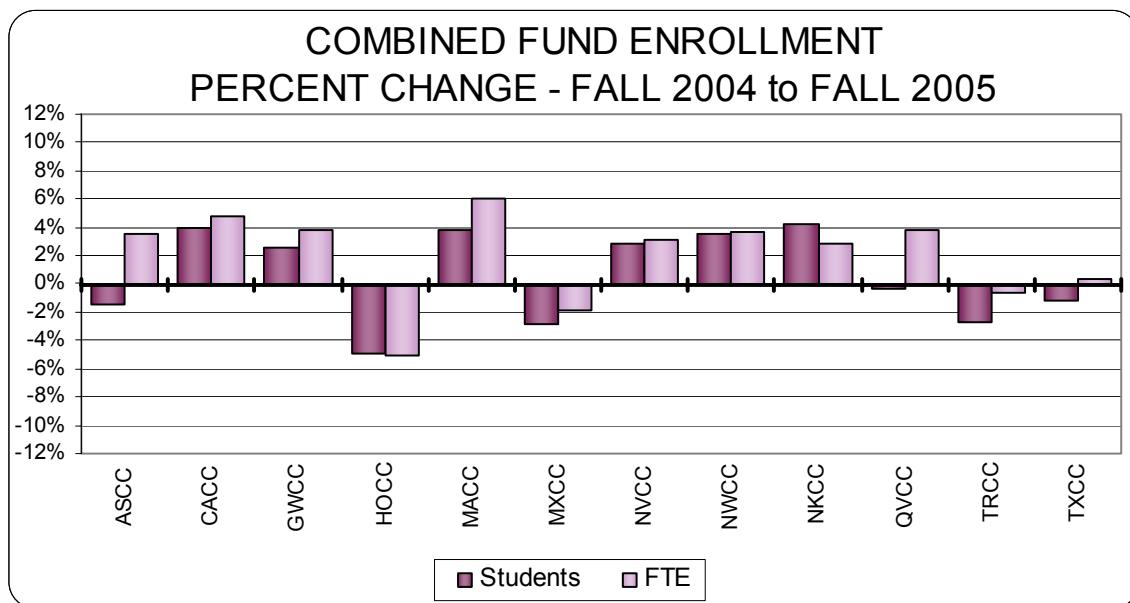


CONNECTICUT COMMUNITY COLLEGES FALL 2001 - FALL 2005



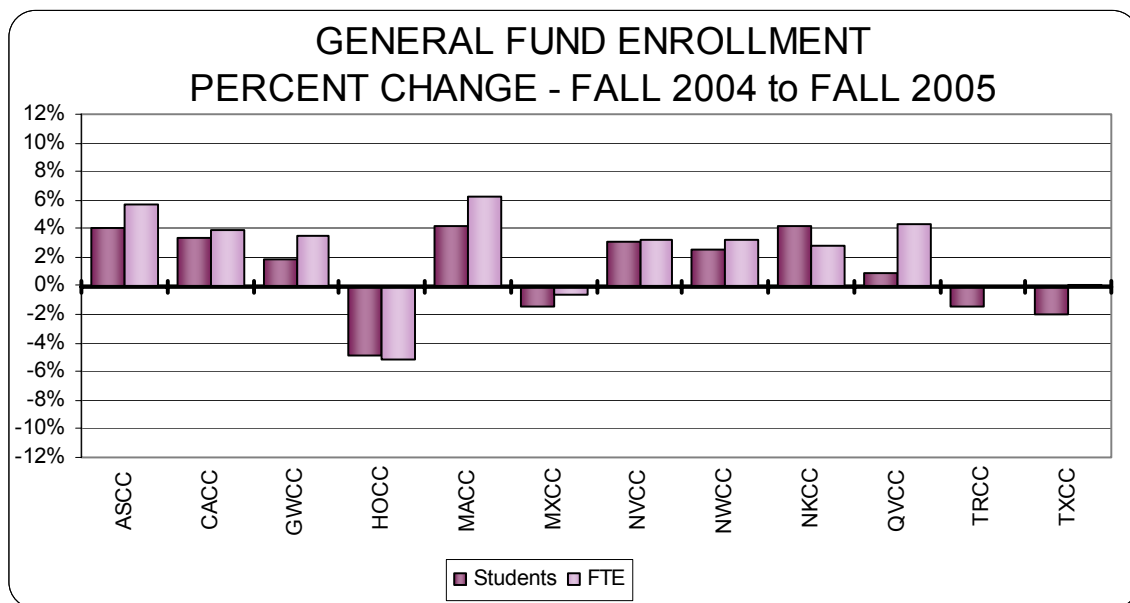
CONNECTICUT COMMUNITY COLLEGES
COMBINED FUND ENROLLMENT
FALL 2004 & FALL 2005

	FALL 2004		FALL 2005		PERCENT CHANGE	
	STUDENTS	FTE	STUDENTS	FTE	STUDENTS	FTE
Asnuntuck CC	1,504	759	1,483	786	-1.4%	3.6%
Capital CC	3,436	1,846	3,573	1,933	4.0%	4.7%
Gateway CC	5,595	2,971	5,739	3,083	2.6%	3.8%
Housatonic CC	4,701	2,602	4,471	2,469	-4.9%	-5.1%
Manchester CC	5,906	3,499	6,135	3,712	3.9%	6.1%
Middlesex CC	2,354	1,312	2,286	1,287	-2.9%	-1.9%
Naugatuck Valley CC	5,514	3,169	5,667	3,268	2.8%	3.1%
Northwestern Ct. CC	1,516	771	1,569	799	3.5%	3.7%
Norwalk CC	5,790	3,225	6,036	3,316	4.2%	2.8%
Quinebaug Valley CC	1,721	913	1,714	948	-0.4%	3.9%
Three Rivers CC	3,764	2,033	3,660	2,020	-2.8%	-0.7%
Tunxis CC	3,942	2,114	3,894	2,121	-1.2%	0.3%
SYSTEM TOTAL	45,743	25,215	46,227	25,743	1.1%	2.1%



CONNECTICUT COMMUNITY COLLEGES
GENERAL FUND ENROLLMENT
FALL 2004 & FALL 2005

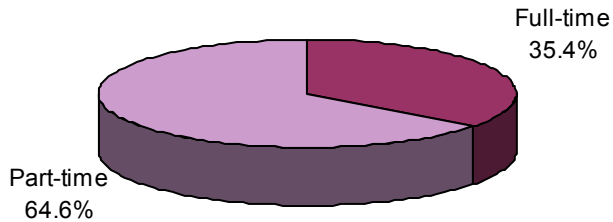
	FALL 2004		FALL 2005		PERCENT CHANGE	
	STUDENTS	FTE	STUDENTS	FTE	STUDENTS	FTE
Asnuntuck CC	1,385	735	1,441	778	4.0%	5.7%
Capital CC	3,426	1,843	3,543	1,915	3.4%	3.9%
Gateway CC	5,560	2,955	5,666	3,057	1.9%	3.5%
Housatonic CC	4701	2,602	4,471	2,469	-4.9%	-5.1%
Manchester CC	5,828	3,440	6,071	3,654	4.2%	6.2%
Middlesex CC	2,320	1,295	2,286	1,287	-1.5%	-0.6%
Naugatuck Valley CC	5,439	3,153	5,606	3,253	3.1%	3.2%
Northwestern Ct. CC	1,511	770	1,549	795	2.5%	3.2%
Norwalk CC	5,790	3,225	6,036	3,316	4.2%	2.8%
Quinebaug Valley CC	1,699	908	1,714	948	0.9%	4.4%
Three Rivers CC	3,711	2,021	3,660	2,020	-1.4%	-0.1%
Tunxis CC	3,926	2,108	3,847	2,111	-2.0%	0.1%
SYSTEM TOTAL	45,296	25,055	45,890	25,603	1.3%	2.2%



CONNECTICUT COMMUNITY COLLEGES
 COMBINED FUND ENROLLMENT
 FULL-TIME/PART-TIME
 FALL 2005

	<u>FULL-TIME</u>		<u>PART-TIME</u>		<u>TOTAL</u>		<u>PERCENT</u>	
	STUDENTS	FTE	STUDENTS	FTE	STUDENTS	FTE	Full-time	Part-time
Asnuntuck CC	526	468	957	318	1,483	786	35.5%	64.5%
Capital CC	927	799	2,646	1,134	3,573	1,933	25.9%	74.1%
Gateway CC	1,809	1,546	3,930	1,537	5,739	3,083	31.5%	68.5%
Housatonic CC	1,477	1,272	2,994	1,197	4,471	2,469	33.0%	67.0%
Manchester CC	2,713	2,351	3,422	1,361	6,135	3,712	44.2%	55.8%
Middlesex CC	876	752	1,410	535	2,286	1,287	38.3%	61.7%
Naugatuck Valley CC	2,211	1,910	3,456	1,358	5,667	3,268	39.0%	61.0%
Northwestern Ct. CC	527	455	1,042	344	1,569	799	33.6%	66.4%
Norwalk CC	2,015	1,806	4,021	1,510	6,036	3,316	33.4%	66.6%
Quinebaug Valley CC	643	551	1,071	397	1,714	948	37.5%	62.5%
Three Rivers CC	1,173	1,043	2,487	976	3,660	2,020	32.0%	68.0%
Tunxis CC	1,488	1,258	2,406	862	3,894	2,121	38.2%	61.8%
SYSTEM TOTAL	16,385	14,212	29,842	11,531	46,227	25,743	35.4%	64.6%

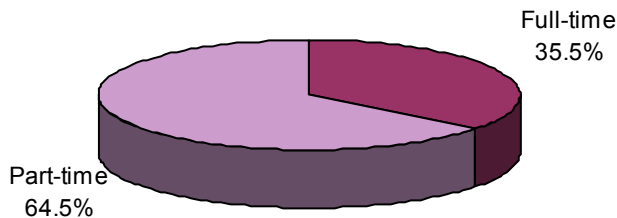
**FULL-TIME/PART-TIME
 FALL 2005 COMBINED FUND ENROLLMENT**



CONNECTICUT COMMUNITY COLLEGES
GENERAL FUND ENROLLMENT
FULL-TIME/PART-TIME
FALL 2005

	<u>FULL-TIME</u>		<u>PART-TIME</u>		<u>TOTAL</u>		<u>PERCENT</u>	
	STUDENTS	FTE	STUDENTS	FTE	STUDENTS	FTE	Full-time	Part-time
Asnuntuck CC	526	468	915	310	1,441	778	36.5%	63.5%
Capital CC	920	793	2,623	1,122	3,543	1,915	26.0%	74.0%
Gateway CC	1,803	1,541	3,863	1,516	5,666	3,057	31.8%	68.2%
Housatonic CC	1,477	1,272	2,994	1,197	4,471	2,469	33.0%	67.0%
Manchester CC	2,630	2,280	3,441	1,374	6,071	3,654	43.3%	56.7%
Middlesex CC	876	752	1,410	535	2,286	1,287	38.3%	61.7%
Naugatuck Valley CC	2,211	1,910	3,395	1,343	5,606	3,253	39.4%	60.6%
Northwestern Ct. CC	527	455	1,022	340	1,549	795	34.0%	66.0%
Norwalk CC	2,015	1,806	4,021	1,510	6,036	3,316	33.4%	66.6%
Quinebaug Valley CC	643	551	1,071	397	1,714	948	37.5%	62.5%
Three Rivers CC	1,173	1,043	2,487	976	3,660	2,020	32.0%	68.0%
Tunxis CC	1,488	1,258	2,359	853	3,847	2,111	38.7%	61.3%
SYSTEM TOTAL	16,289	14,130	29,601	11,473	45,890	25,603	35.5%	64.5%

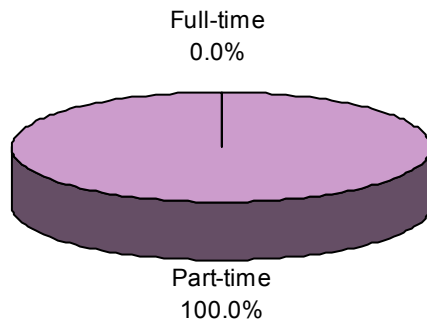
FULL-TIME/PART-TIME
FALL 2005 GENERAL FUND ENROLLMENT



CONNECTICUT COMMUNITY COLLEGES
EXTENSION FUND ENROLLMENT
FULL-TIME/PART-TIME
FALL 2005

	<u>FULL-TIME</u>		<u>PART-TIME</u>		<u>TOTAL</u>		<u>PERCENT</u>	
	STUDENTS	FTE	STUDENTS	FTE	STUDENTS	FTE	Full-time	Part-time
Asnuntuck CC	0	0	43	9	43	9	0.0%	100.0%
Capital CC	0	0	51	18	51	18	0.0%	100.0%
Gateway CC	0	0	82	26	82	26	0.0%	100.0%
Housatonic CC	0	0	0	0	0	0		
Manchester CC	0	0	258	58	258	58	0.0%	100.0%
Middlesex CC	0	0	0	0	0	0		
Naugatuck Valley CC	0	0	64	15	64	15	0.0%	100.0%
Northwestern Ct. CC	0	0	23	5	23	5	0.0%	100.0%
Norwalk CC	0	0	0	0	0	0		
Quinebaug Valley CC	0	0	0	0	0	0		
Three Rivers CC	0	0	0	0	0	0		
Tunxis CC	0	0	47	9	47	9	0.0%	100.0%
SYSTEM TOTAL	0	0	568	140	568	140	0.0%	100.0%

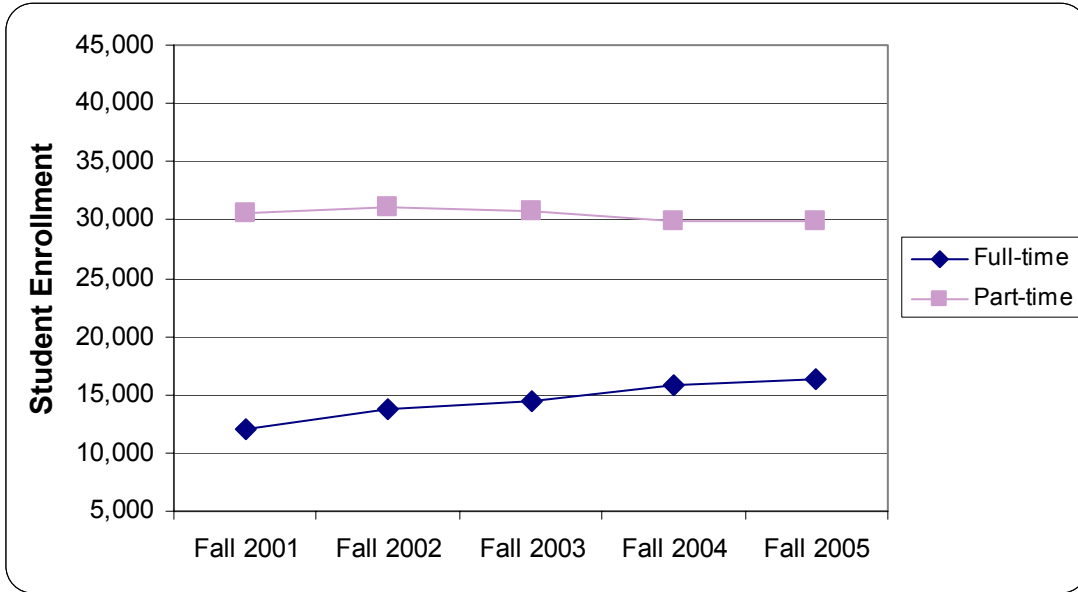
FULL-TIME/PART-TIME
FALL 2005 EXTENSION FUND ENROLLMENT



CONNECTICUT COMMUNITY COLLEGES
 COMBINED FUND STUDENT ENROLLMENT HISTORY
 FALL 2001 - FALL 2005

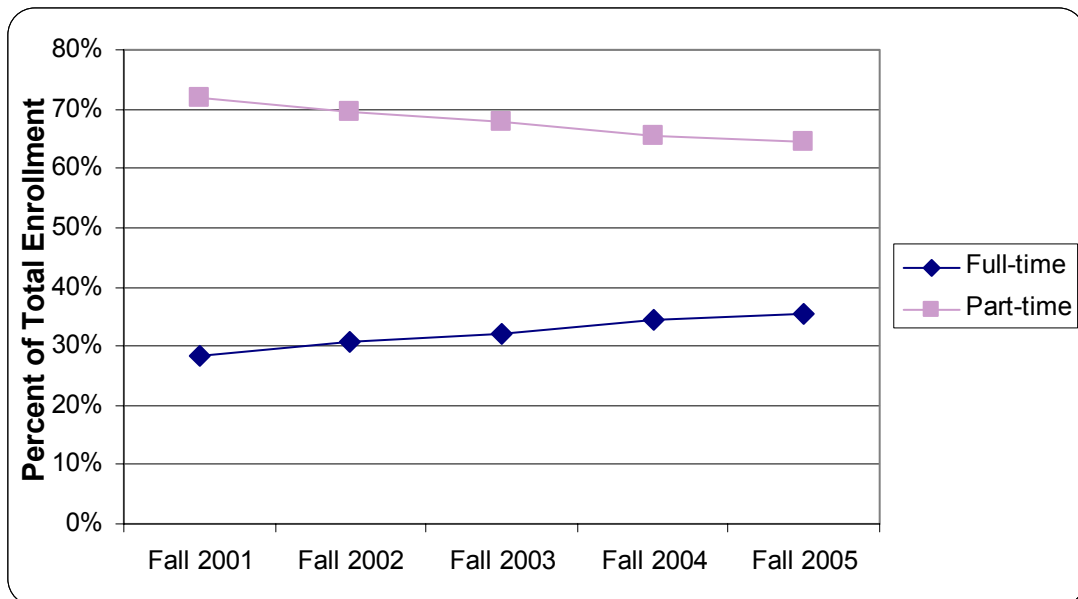
Student Enrollment

	Fall 2001	Fall 2002	Fall 2003	Fall 2004	Fall 2005
Full-time	12,044	13,715	14,469	15,798	16,385
Part-time	30,598	31,154	30,691	29,945	29,842
Total	42,642	44,869	45,160	45,743	46,227



Percent of Total Enrollment

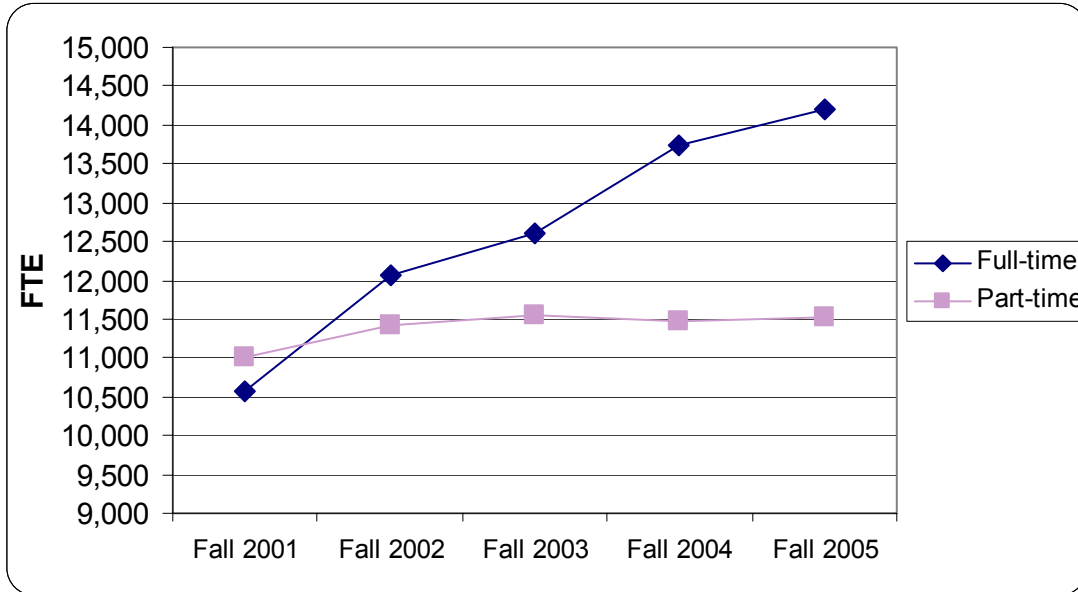
	Fall 2001	Fall 2002	Fall 2003	Fall 2004	Fall 2005
Full-time	28.2%	30.6%	32.0%	34.5%	35.4%
Part-time	71.8%	69.4%	68.0%	65.5%	64.6%
Total	100.0%	100.0%	100.0%	100.0%	100.0%



CONNECTICUT COMMUNITY COLLEGES
 COMBINED FUND FTE ENROLLMENT HISTORY
 FALL 2001 - FALL 2005

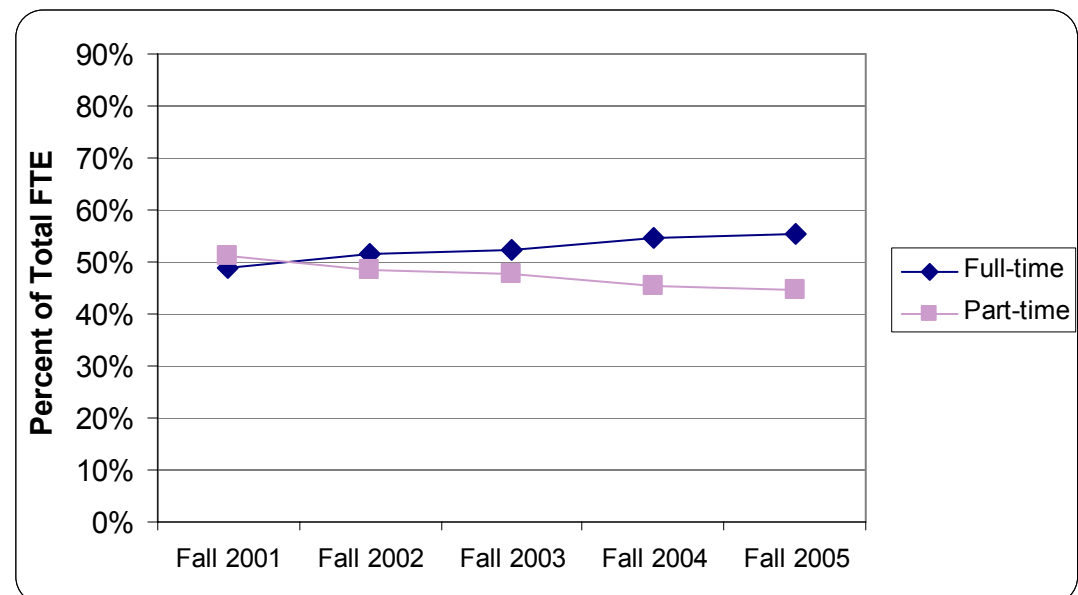
FTE Enrollment

	Fall 2001	Fall 2002	Fall 2003	Fall 2004	Fall 2005
Full-time	10,568	12,063	12,616	13,741	14,212
Part-time	11,000	11,422	11,539	11,474	11,531
Total	21,568	23,485	24,155	25,215	25,743



Percent of Total FTE

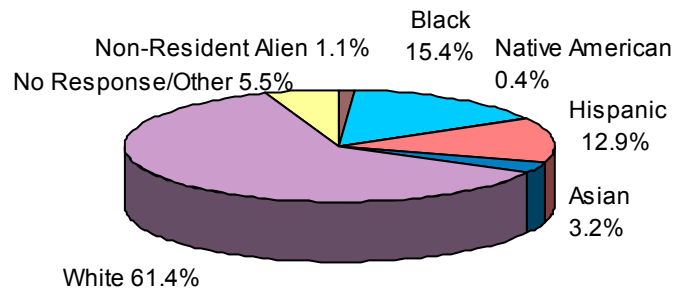
	Fall 2001	Fall 2002	Fall 2003	Fall 2004	Fall 2005
Full-time	49.0%	51.4%	52.2%	54.5%	55.2%
Part-time	51.0%	48.6%	47.8%	45.5%	44.8%
Total	100.0%	100.0%	100.0%	100.0%	100.0%



CONNECTICUT COMMUNITY COLLEGES
COMBINED FUND ENROLLMENT BY ETHNIC GROUP
FALL 2005

	NON-RESIDENT ALIEN	BLACK NON-HISPANIC	AMERICAN INDIAN OR ALASKAN NATIVE	ASIAN OR PACIFIC ISLANDER	HISPANIC	WHITE NON-HISPANIC	UNKNOWN
Asnuntuck CC	2	77	5	25	44	1311	19
Capital CC	24	1371	9	142	904	920	203
Gateway CC	58	1408	14	197	721	3000	341
Housatonic CC	37	1301	9	109	939	1824	252
Manchester CC	44	717	15	230	618	4204	307
Middlesex CC	8	170	2	73	189	1744	100
Naugatuck Valley CC	24	457	20	144	643	3953	426
Northwestern Ct. CC	2	26	4	31	51	1378	77
Norwalk CC	265	1098	12	284	1080	2905	392
Quinebaug Valley CC	2	33	14	20	161	1410	74
Three Rivers CC	20	246	46	128	267	2717	236
Tunxis CC	34	221	15	112	368	3019	125
SYSTEM TOTAL	520 1.1%	7,125 15.4%	165 0.4%	1,495 3.2%	5,985 12.9%	28,385 61.4%	2,552 5.5%

ETHNIC DISTRIBUTION
FALL 2005 COMBINED FUND ENROLLMENT



CONNECTICUT COMMUNITY COLLEGES
ENROLLMENT HISTORY BY ETHNICITY
FALL 2001 - FALL 2005

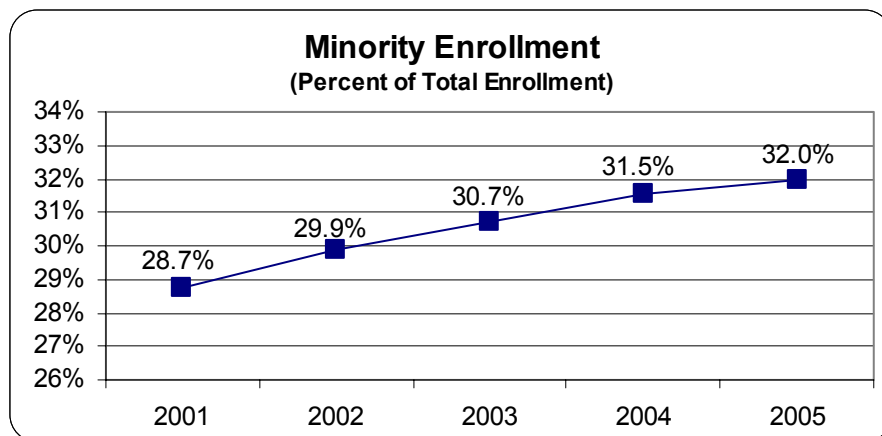
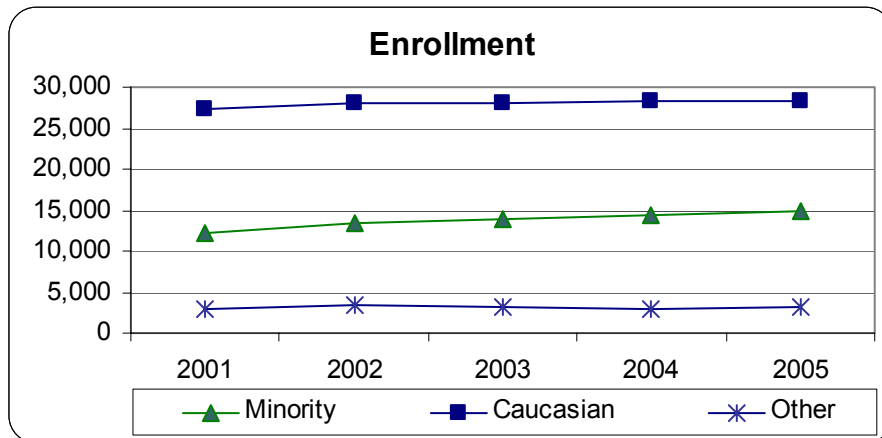
Enrollment

Year	Non-Res	Black	Amer.Ind	Asian	Hispanic	White	Unk	Total
2001	475	6,082	164	1,235	4,774	27,344	2,568	42,642
2002	543	6,677	205	1,375	5,157	28,124	2,788	44,869
2003	499	6,858	187	1,389	5,447	28,155	2,625	45,160
2004	401	6,990	197	1,475	5,762	28,346	2,572	45,743
2005	520	7,125	165	1,495	5,985	28,385	2,552	46,227

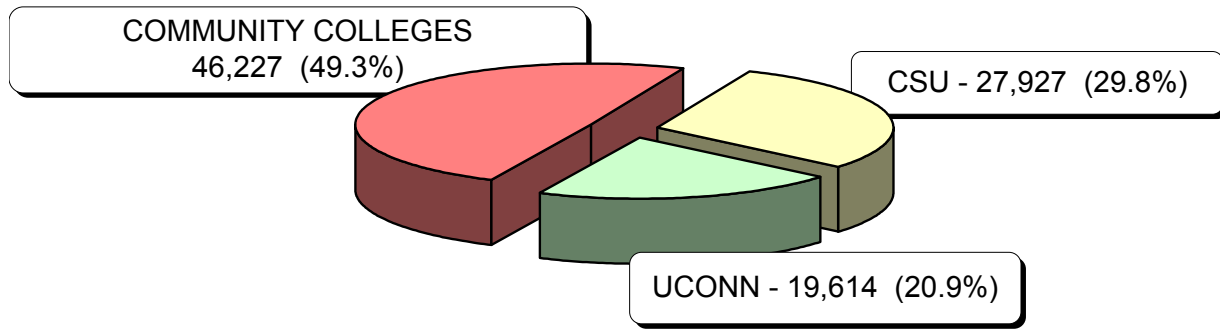
Percent of Total Enrollment

Year	Non-Res	Black	Amer.Ind	Asian	Hispanic	White	Unk
2001	1.1%	14.3%	0.4%	2.9%	11.2%	64.1%	6.0%
2002	1.2%	14.9%	0.5%	3.1%	11.5%	62.7%	6.2%
2003	1.1%	15.2%	0.4%	3.1%	12.1%	62.3%	5.8%
2004	0.9%	15.3%	0.4%	3.2%	12.6%	62.0%	5.6%
2005	1.1%	15.4%	0.4%	3.2%	12.9%	61.4%	5.5%

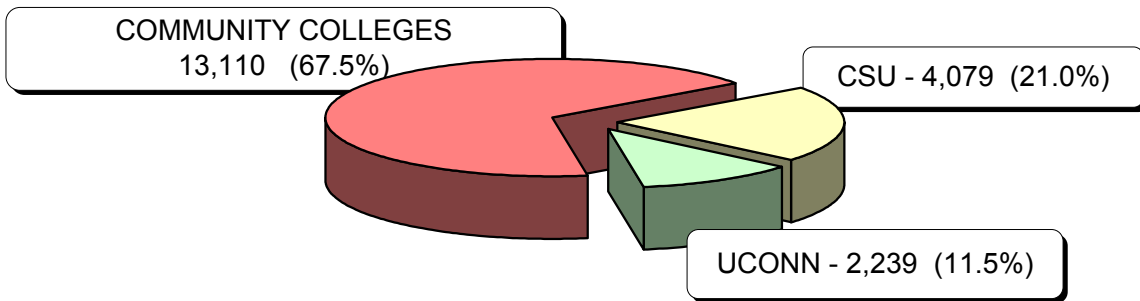
This Fall, 14,770 minority students make up 32% of the student body (28.4% are Black and Hispanic) – a 20.5% increase in minority enrollment since 2001.



UNDERGRADUATES AT PUBLIC INSTITUTIONS FALL 2005 HEADCOUNT ENROLLMENT



UNDERGRADUATES AT PUBLIC INSTITUTIONS FALL 2005 AFRICAN AMERICAN & HISPANIC ENROLLMENT



UNDERGRADUATES AT PUBLIC INSTITUTIONS FALL 2005 MINORITY ENROLLMENT

