



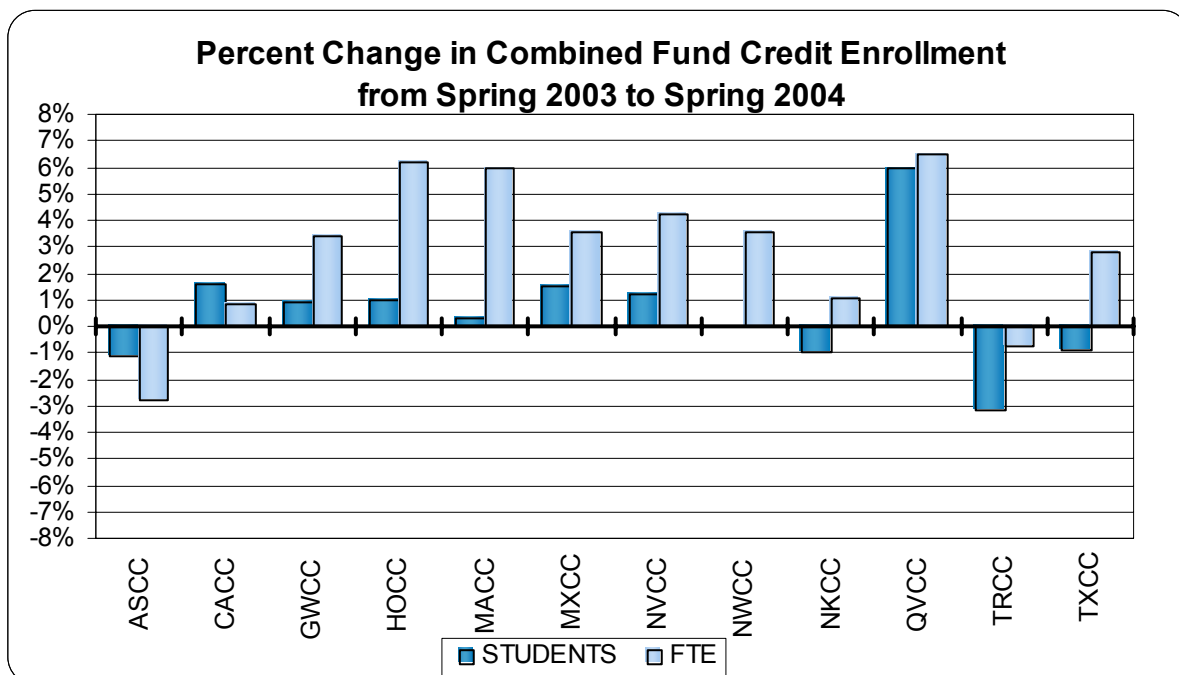
**SPRING 2004 CREDIT ENROLLMENT REPORT
(February 23, 2004)**

~~~~~  
Dr. Corby A. Coperthwaite & Mr. Dennis G. Jones  
Office of Planning, Research and Assessment  
Board of Trustees  
Connecticut Community-Technical Colleges  
61 Woodland Street  
Hartford, Connecticut 06105

Phone: (860)244-7604  
Fax: (860)566-1308  
CCoperthwaite@commnet.edu

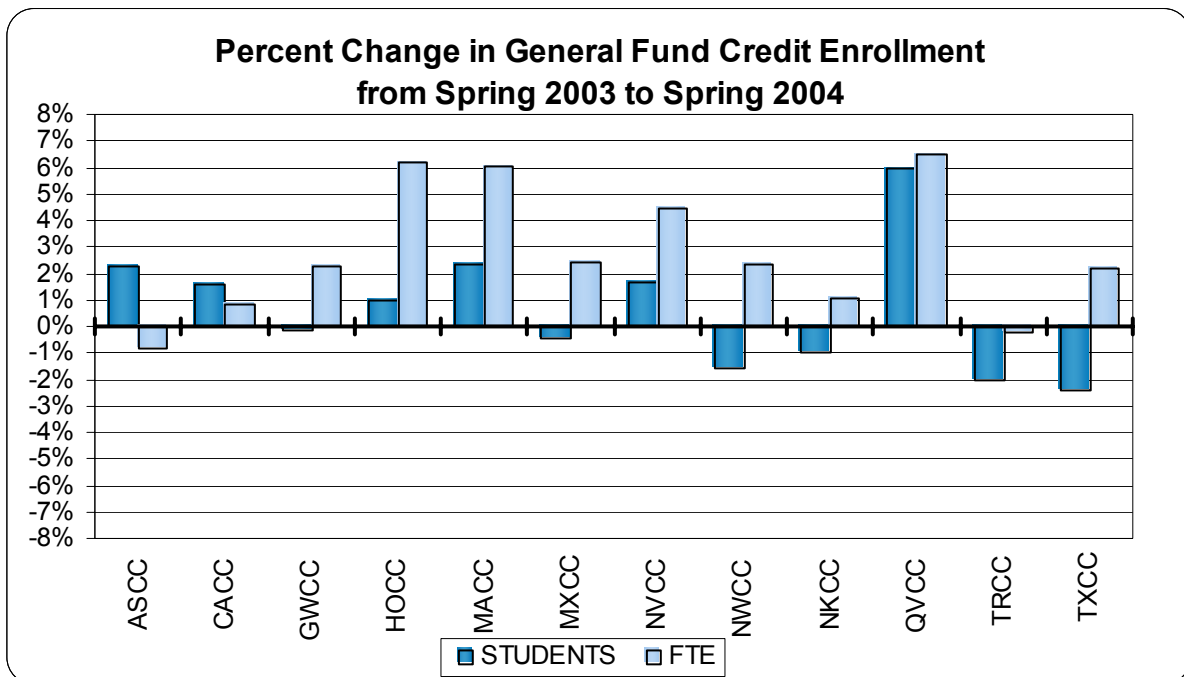
CONNECTICUT COMMUNITY COLLEGES  
COMBINED FUND CREDIT FTE ENROLLMENT  
SPRING 2003 & SPRING 2004

|                     | <u>SPRING 2003</u> |               | <u>SPRING 2004</u> |               | <u>PERCENT CHANGE</u> |             |
|---------------------|--------------------|---------------|--------------------|---------------|-----------------------|-------------|
|                     | STUDENTS           | FTE           | STUDENTS           | FTE           | STUDENTS              | FTE         |
| Asnuntuck CC        | 1,468              | 729           | 1,451              | 709           | -1.2%                 | -2.8%       |
| Capital CC          | 3,416              | 1,794         | 3,470              | 1,809         | 1.6%                  | 0.9%        |
| Gateway CC          | 5,300              | 2,620         | 5,349              | 2,708         | 0.9%                  | 3.4%        |
| Housatonic CC       | 4,343              | 2,204         | 4,384              | 2,341         | 0.9%                  | 6.2%        |
| Manchester CC       | 5,532              | 3,010         | 5,550              | 3,188         | 0.3%                  | 5.9%        |
| Middlesex CC        | 2,224              | 1,129         | 2,257              | 1,169         | 1.5%                  | 3.5%        |
| Naugatuck Valley CC | 4,932              | 2,623         | 4,993              | 2,734         | 1.2%                  | 4.2%        |
| Northwestern Ct. CC | 1,416              | 674           | 1,416              | 698           | 0.0%                  | 3.6%        |
| Norwalk CC          | 5,800              | 3,092         | 5,742              | 3,125         | -1.0%                 | 1.1%        |
| Quinebaug Valley CC | 1,426              | 734           | 1,511              | 782           | 6.0%                  | 6.5%        |
| Three Rivers CC     | 3,557              | 1,764         | 3,445              | 1,751         | -3.1%                 | -0.7%       |
| Tunxis CC           | 3,801              | 1,882         | 3,767              | 1,934         | -0.9%                 | 2.8%        |
| <b>SYSTEM TOTAL</b> | <b>43,215</b>      | <b>22,254</b> | <b>43,335</b>      | <b>22,949</b> | <b>0.3%</b>           | <b>3.1%</b> |



CONNECTICUT COMMUNITY COLLEGES  
GENERAL FUND CREDIT FTE ENROLLMENT  
SPRING 2003 & SPRING 2004

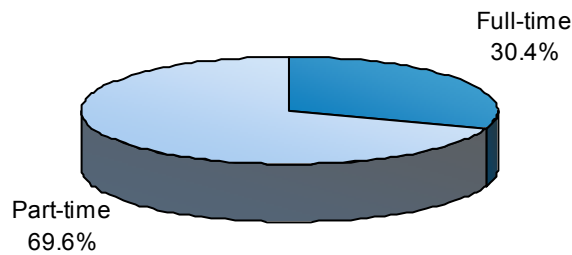
|                     | <u>SPRING 2003</u> |               | <u>SPRING 2004</u> |               | <u>PERCENT CHANGE</u> |             |
|---------------------|--------------------|---------------|--------------------|---------------|-----------------------|-------------|
|                     | STUDENTS           | FTE           | STUDENTS           | FTE           | STUDENTS              | FTE         |
| Asnuntuck CC        | 1,320              | 693           | 1,350              | 688           | 2.3%                  | -0.8%       |
| Capital CC          | 3,416              | 1,794         | 3,470              | 1,809         | 1.6%                  | 0.9%        |
| Gateway CC          | 5,189              | 2,597         | 5,183              | 2,657         | -0.1%                 | 2.3%        |
| Housatonic CC       | 4,343              | 2,204         | 4,384              | 2,341         | 0.9%                  | 6.2%        |
| Manchester CC       | 5,326              | 2,937         | 5,449              | 3,115         | 2.3%                  | 6.1%        |
| Middlesex CC        | 2,213              | 1,121         | 2,203              | 1,148         | -0.5%                 | 2.4%        |
| Naugatuck Valley CC | 4,860              | 2,608         | 4,940              | 2,723         | 1.6%                  | 4.4%        |
| Northwestern Ct. CC | 1,394              | 661           | 1,372              | 676           | -1.6%                 | 2.3%        |
| Norwalk CC          | 5,800              | 3,092         | 5,742              | 3,125         | -1.0%                 | 1.1%        |
| Quinebaug Valley CC | 1,426              | 734           | 1,511              | 782           | 6.0%                  | 6.5%        |
| Three Rivers CC     | 3,477              | 1,747         | 3,406              | 1,743         | -2.0%                 | -0.2%       |
| Tunxis CC           | 3,801              | 1,882         | 3,709              | 1,923         | -2.4%                 | 2.2%        |
| <b>SYSTEM TOTAL</b> | <b>42,565</b>      | <b>22,070</b> | <b>42,719</b>      | <b>22,731</b> | <b>0.4%</b>           | <b>3.0%</b> |



CONNECTICUT COMMUNITY COLLEGES  
 COMBINED FUND CREDIT ENROLLMENT  
 FULL-TIME/PART-TIME  
 SPRING 2004

|                     | <u>FULL-TIME</u> |               | <u>PART-TIME</u> |               | <u>TOTAL</u>  |               | <u>PERCENT</u> |              |
|---------------------|------------------|---------------|------------------|---------------|---------------|---------------|----------------|--------------|
|                     | STUDENTS         | FTE           | STUDENTS         | FTE           | STUDENTS      | FTE           | Full-time      | Part-time    |
| Asnuntuck CC        | 427              | 386           | 1,024            | 323           | 1,451         | 709           | 29.4%          | 70.6%        |
| Capital CC          | 816              | 707           | 2,654            | 1,103         | 3,470         | 1,809         | 23.5%          | 76.5%        |
| Gateway CC          | 1,382            | 1,208         | 3,967            | 1,500         | 5,349         | 2,708         | 25.8%          | 74.2%        |
| Housatonic CC       | 1,230            | 1,070         | 3,154            | 1,271         | 4,384         | 2,341         | 28.1%          | 71.9%        |
| Manchester CC       | 2,098            | 1,861         | 3,452            | 1,327         | 5,550         | 3,188         | 37.8%          | 62.2%        |
| Middlesex CC        | 702              | 613           | 1,555            | 556           | 2,257         | 1,169         | 31.1%          | 68.9%        |
| Naugatuck Valley CC | 1,692            | 1,485         | 3,301            | 1,249         | 4,993         | 2,734         | 33.9%          | 66.1%        |
| Northwestern Ct. CC | 427              | 380           | 989              | 318           | 1,416         | 698           | 30.2%          | 69.8%        |
| Norwalk CC          | 1,823            | 1,646         | 3,919            | 1,480         | 5,742         | 3,125         | 31.7%          | 68.3%        |
| Quinebaug Valley CC | 461              | 401           | 1,050            | 381           | 1,511         | 782           | 30.5%          | 69.5%        |
| Three Rivers CC     | 897              | 797           | 2,548            | 954           | 3,445         | 1,751         | 26.0%          | 74.0%        |
| Tunxis CC           | 1,204            | 1,029         | 2,563            | 905           | 3,767         | 1,934         | 32.0%          | 68.0%        |
| <b>SYSTEM TOTAL</b> | <b>13,159</b>    | <b>11,581</b> | <b>30,176</b>    | <b>11,368</b> | <b>43,335</b> | <b>22,949</b> | <b>30.4%</b>   | <b>69.6%</b> |

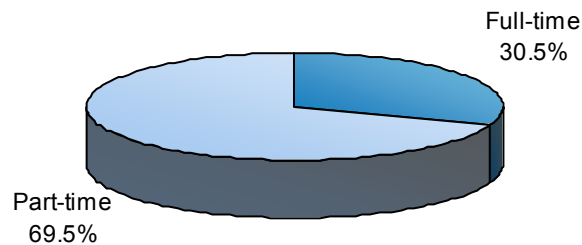
FULL-TIME/PART-TIME  
 SPRING 2004 COMBINED FUND CREDIT ENROLLMENT



CONNECTICUT COMMUNITY COLLEGES  
 GENERAL FUND CREDIT ENROLLMENT  
 FULL-TIME/PART-TIME  
 SPRING 2004

|                     | <u>FULL-TIME</u> |               | <u>PART-TIME</u> |               | <u>TOTAL</u>  |               | <u>PERCENT</u> |              |
|---------------------|------------------|---------------|------------------|---------------|---------------|---------------|----------------|--------------|
|                     | STUDENTS         | FTE           | STUDENTS         | FTE           | STUDENTS      | FTE           | Full-time      | Part-time    |
| Asnuntuck CC        | 427              | 386           | 923              | 302           | 1,350         | 688           | 31.6%          | 68.4%        |
| Capital CC          | 816              | 707           | 2,654            | 1,103         | 3,470         | 1,809         | 23.5%          | 76.5%        |
| Gateway CC          | 1,379            | 1,205         | 3,804            | 1,452         | 5,183         | 2,657         | 26.6%          | 73.4%        |
| Housatonic CC       | 1,230            | 1,070         | 3,154            | 1,271         | 4,384         | 2,341         | 28.1%          | 71.9%        |
| Manchester CC       | 2,024            | 1,795         | 3,425            | 1,320         | 5,449         | 3,115         | 37.1%          | 62.9%        |
| Middlesex CC        | 686              | 600           | 1,517            | 549           | 2,203         | 1,148         | 31.1%          | 68.9%        |
| Naugatuck Valley CC | 1,692            | 1,485         | 3,248            | 1,238         | 4,940         | 2,723         | 34.3%          | 65.7%        |
| Northwestern Ct. CC | 410              | 364           | 962              | 312           | 1,372         | 676           | 29.9%          | 70.1%        |
| Norwalk CC          | 1,823            | 1,646         | 3,919            | 1,480         | 5,742         | 3,125         | 31.7%          | 68.3%        |
| Quinebaug Valley CC | 461              | 401           | 1,050            | 381           | 1,511         | 782           | 30.5%          | 69.5%        |
| Three Rivers CC     | 897              | 797           | 2,509            | 946           | 3,406         | 1,743         | 26.3%          | 73.7%        |
| Tunxis CC           | 1,204            | 1,029         | 2,505            | 894           | 3,709         | 1,923         | 32.5%          | 67.5%        |
| <b>SYSTEM TOTAL</b> | <b>13,049</b>    | <b>11,483</b> | <b>29,670</b>    | <b>11,247</b> | <b>42,719</b> | <b>22,731</b> | <b>30.5%</b>   | <b>69.5%</b> |

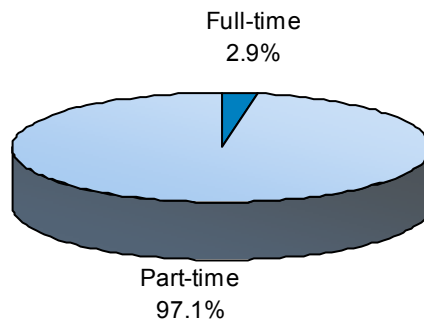
FULL-TIME/PART-TIME  
 SPRING 2004 GENERAL FUND CREDIT ENROLLMENT



CONNECTICUT COMMUNITY COLLEGES  
EXTENSION FUND CREDIT ENROLLMENT  
FULL-TIME/PART-TIME  
SPRING 2004

|                     | <u>FULL-TIME</u> |           | <u>PART-TIME</u> |            | <u>TOTAL</u> |            | <u>PERCENT</u> |              |
|---------------------|------------------|-----------|------------------|------------|--------------|------------|----------------|--------------|
|                     | STUDENTS         | FTE       | STUDENTS         | FTE        | STUDENTS     | FTE        | Full-time      | Part-time    |
| Asnuntuck CC        | 0                | 0         | 103              | 21         | 103          | 21         | 0.0%           | 100.0%       |
| Capital CC          | 0                | 0         | 0                | 0          | 0            | 0          |                |              |
| Gateway CC          | 0                | 0         | 177              | 51         | 177          | 51         | 0.0%           | 100.0%       |
| Housatonic CC       | 0                | 0         | 0                | 0          | 0            | 0          |                |              |
| Manchester CC       | 0                | 0         | 317              | 73         | 317          | 73         | 0.0%           | 100.0%       |
| Middlesex CC        | 16               | 13        | 38               | 8          | 54           | 20         | 29.6%          | 70.4%        |
| Naugatuck Valley CC | 0                | 0         | 54               | 11         | 54           | 11         | 0.0%           | 100.0%       |
| Northwestern Ct. CC | 9                | 8         | 61               | 14         | 70           | 22         | 12.9%          | 87.1%        |
| Norwalk CC          | 0                | 0         | 0                | 0          | 0            | 0          |                |              |
| Quinebaug Valley CC | 0                | 0         | 0                | 0          | 0            | 0          |                |              |
| Three Rivers CC     | 0                | 0         | 41               | 8          | 41           | 8          | 0.0%           | 100.0%       |
| Tunxis CC           | 0                | 0         | 58               | 12         | 58           | 12         | 0.0%           | 100.0%       |
| <b>SYSTEM TOTAL</b> | <b>25</b>        | <b>21</b> | <b>849</b>       | <b>198</b> | <b>874</b>   | <b>218</b> | <b>2.9%</b>    | <b>97.1%</b> |

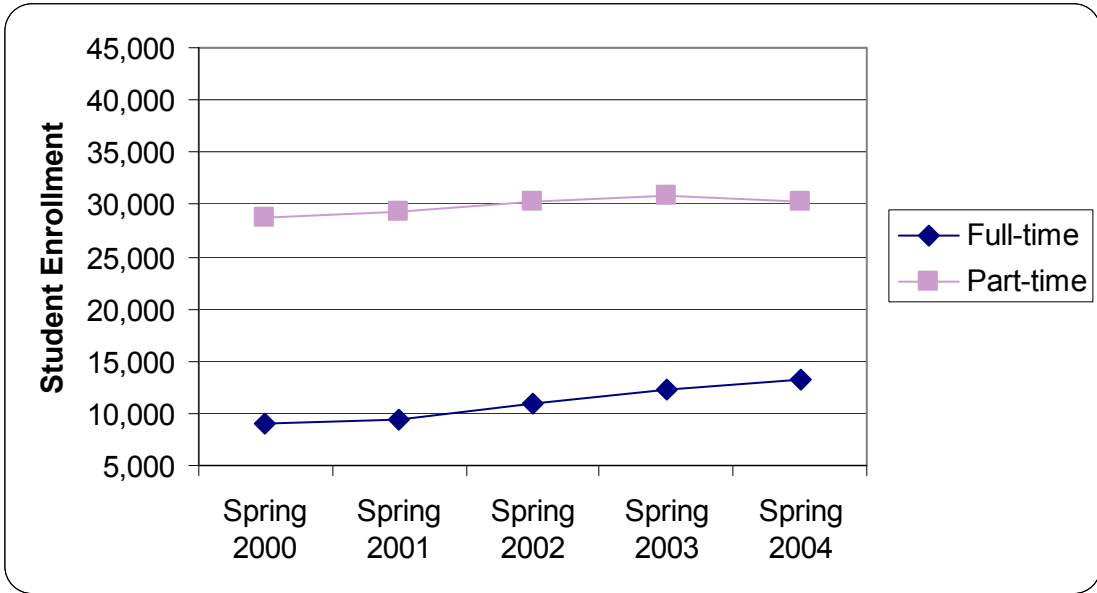
FULL-TIME/PART-TIME  
SPRING 2004 EXTENSION FUND CREDIT ENROLLMENT



CONNECTICUT COMMUNITY COLLEGES  
 COMBINED FUND STUDENT ENROLLMENT HISTORY  
 SPRING 2000 - SPRING 2004

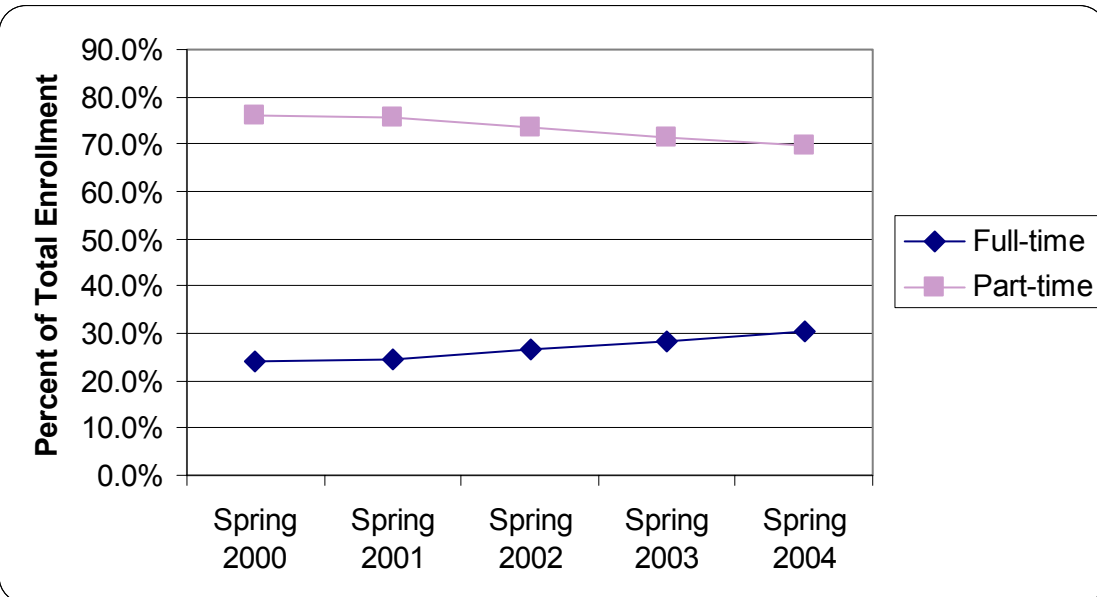
**Student Enrollment**

|           | Spring 2000 | Spring 2001 | Spring 2002 | Spring 2003 | Spring 2004 |
|-----------|-------------|-------------|-------------|-------------|-------------|
| Full-time | 9,067       | 9,494       | 10,937      | 12,313      | 13,159      |
| Part-time | 28,751      | 29,320      | 30,211      | 30,902      | 30,176      |
| Total     | 37,818      | 38,814      | 41,148      | 43,215      | 43,335      |



**Percent of Total Enrollment**

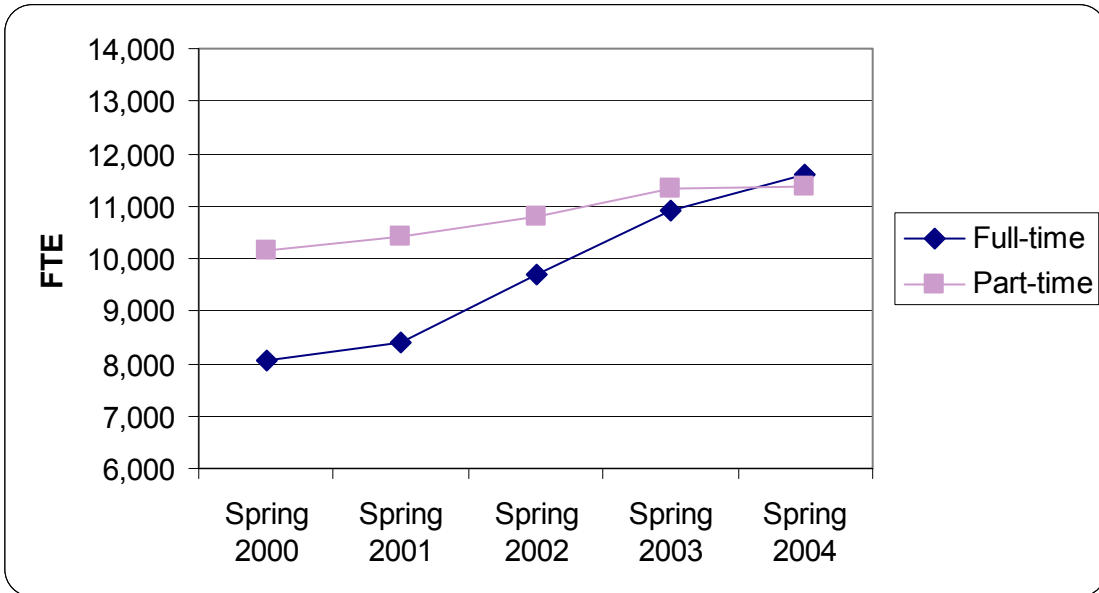
|           | Spring 2000 | Spring 2001 | Spring 2002 | Spring 2003 | Spring 2004 |
|-----------|-------------|-------------|-------------|-------------|-------------|
| Full-time | 24.0%       | 24.5%       | 26.6%       | 28.5%       | 30.4%       |
| Part-time | 76.0%       | 75.5%       | 73.4%       | 71.5%       | 69.6%       |
| Total     | 100.0%      | 100.0%      | 100.0%      | 100.0%      | 100.0%      |



CONNECTICUT COMMUNITY COLLEGES  
 COMBINED FUND FTE ENROLLMENT HISTORY  
 SPRING 2000 - SPRING 2004

**FTE Enrollment**

|           | Spring 2000 | Spring 2001 | Spring 2002 | Spring 2003 | Spring 2004 |
|-----------|-------------|-------------|-------------|-------------|-------------|
| Full-time | 8,047       | 8,411       | 9,695       | 10,911      | 11,581      |
| Part-time | 10,159      | 10,427      | 10,791      | 11,344      | 11,368      |
| Total     | 18,206      | 18,838      | 20,486      | 22,255      | 22,949      |



**Percent of Total FTE**

|           | Spring 2000 | Spring 2001 | Spring 2002 | Spring 2003 | Spring 2004 |
|-----------|-------------|-------------|-------------|-------------|-------------|
| Full-time | 44.2%       | 44.6%       | 47.3%       | 49.0%       | 50.5%       |
| Part-time | 55.8%       | 55.4%       | 52.7%       | 51.0%       | 49.5%       |
| Total     | 100.0%      | 100.0%      | 100.0%      | 100.0%      | 100.0%      |

