



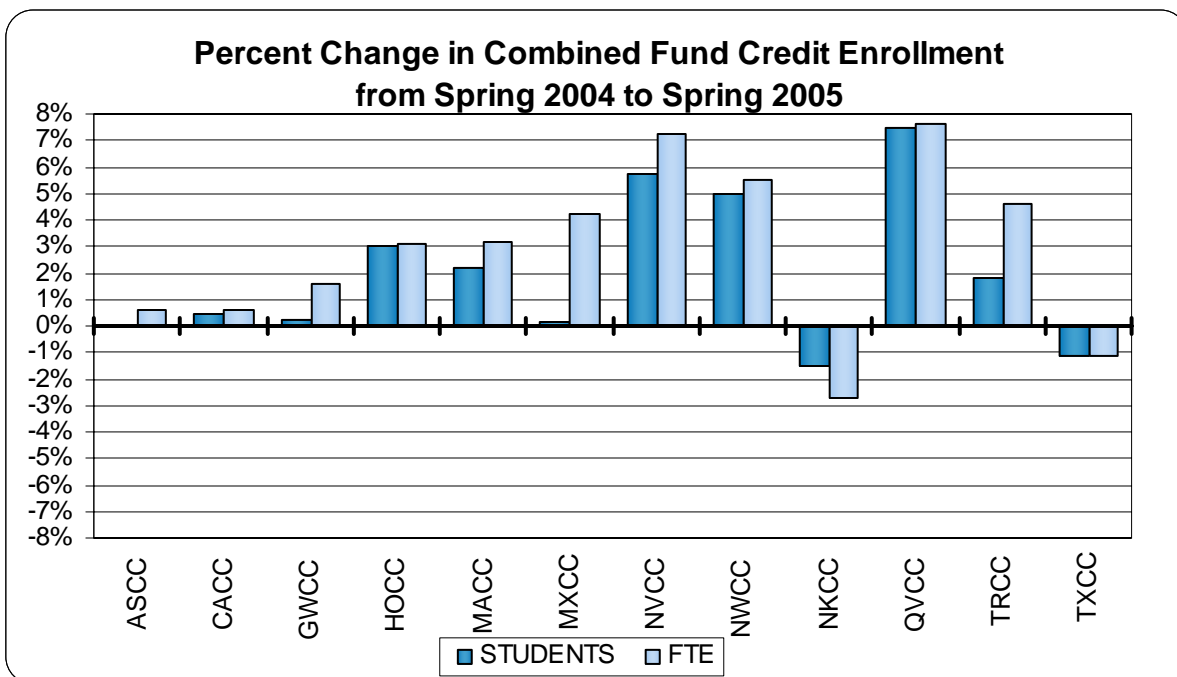
**SPRING 2005 CREDIT ENROLLMENT REPORT
(February 14, 2005)**

~~~~~  
Dr. Corby A. Coperthwaite & Mr. Dennis G. Jones  
Office of Planning, Research and Assessment  
Board of Trustees  
Connecticut Community-Technical Colleges  
61 Woodland Street  
Hartford, Connecticut 06105

Phone: (860)244-7604  
Fax: (860)566-1308  
CCoperthwaite@commnet.edu  
~~~~~

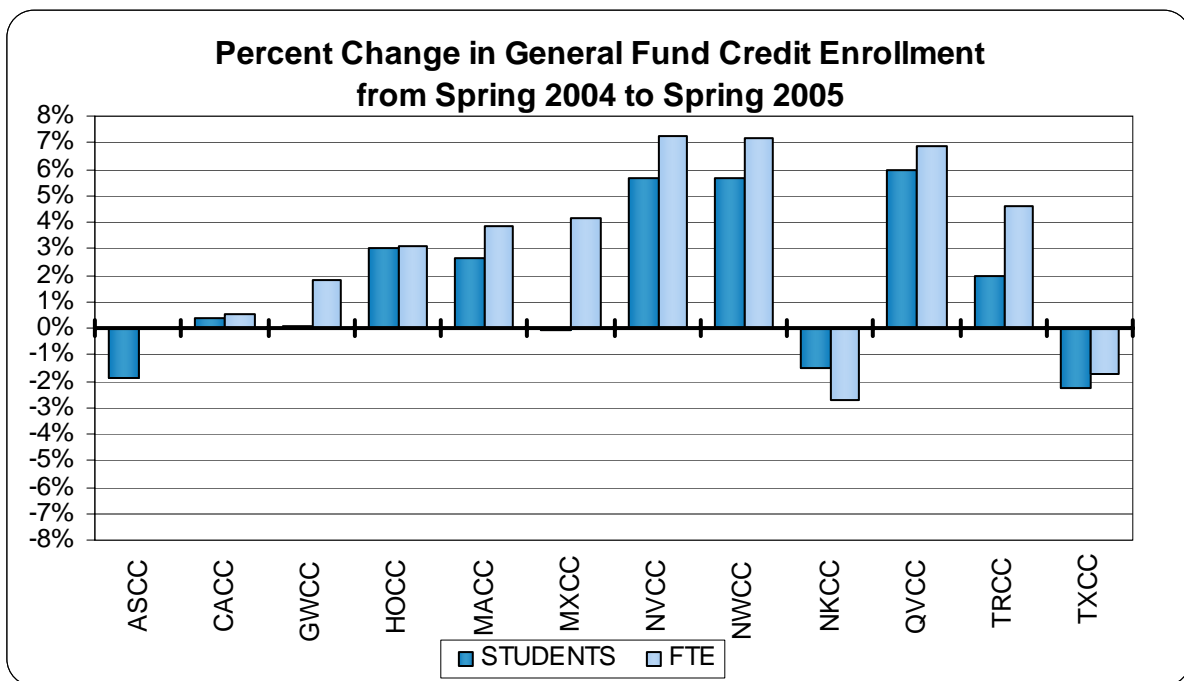
CONNECTICUT COMMUNITY COLLEGES
COMBINED FUND CREDIT FTE ENROLLMENT
SPRING 2004 & SPRING 2005

	<u>SPRING 2004</u>		<u>SPRING 2005</u>		<u>PERCENT CHANGE</u>	
	STUDENTS	FTE	STUDENTS	FTE	STUDENTS	FTE
Asnuntuck CC	1,451	709	1,451	713	0.0%	0.6%
Capital CC	3,470	1,809	3,485	1,820	0.4%	0.6%
Gateway CC	5,349	2,708	5,362	2,750	0.2%	1.6%
Housatonic CC	4,384	2,341	4,517	2,413	3.0%	3.1%
Manchester CC	5,550	3,188	5,672	3,290	2.2%	3.2%
Middlesex CC	2,257	1,169	2,260	1,218	0.1%	4.2%
Naugatuck Valley CC	4,993	2,734	5,278	2,931	5.7%	7.2%
Northwestern Ct. CC	1,416	698	1,486	737	4.9%	5.5%
Norwalk CC	5,742	3,125	5,655	3,040	-1.5%	-2.7%
Quinebaug Valley CC	1,511	782	1,624	841	7.5%	7.6%
Three Rivers CC	3,445	1,751	3,507	1,833	1.8%	4.6%
Tunxis CC	3,767	1,934	3,723	1,912	-1.2%	-1.2%
SYSTEM TOTAL	43,335	22,949	44,020	23,498	1.6%	2.4%



CONNECTICUT COMMUNITY COLLEGES
GENERAL FUND CREDIT FTE ENROLLMENT
SPRING 2004 & SPRING 2005

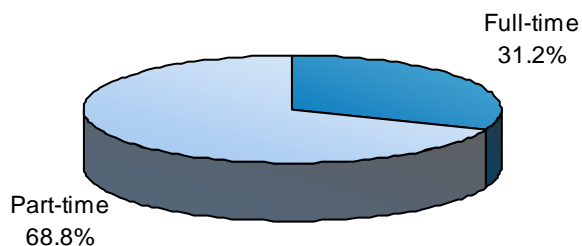
	<u>SPRING 2004</u>		<u>SPRING 2005</u>		<u>PERCENT CHANGE</u>	
	STUDENTS	FTE	STUDENTS	FTE	STUDENTS	FTE
Asnuntuck CC	1,350	688	1,325	688	-1.9%	0.0%
Capital CC	3,470	1,809	3,482	1,819	0.3%	0.5%
Gateway CC	5,183	2,657	5,185	2,704	0.0%	1.8%
Housatonic CC	4,384	2,341	4,517	2,413	3.0%	3.1%
Manchester CC	5,449	3,115	5,592	3,236	2.6%	3.9%
Middlesex CC	2,203	1,148	2,201	1,196	-0.1%	4.1%
Naugatuck Valley CC	4,940	2,723	5,219	2,919	5.6%	7.2%
Northwestern Ct. CC	1,372	676	1,450	725	5.7%	7.2%
Norwalk CC	5,742	3,125	5,655	3,040	-1.5%	-2.7%
Quinebaug Valley CC	1,511	782	1,601	835	6.0%	6.9%
Three Rivers CC	3,406	1,743	3,473	1,824	2.0%	4.6%
Tunxis CC	3,709	1,923	3,624	1,889	-2.3%	-1.8%
SYSTEM TOTAL	42,719	22,731	43,324	23,287	1.4%	2.4%



CONNECTICUT COMMUNITY COLLEGES
COMBINED FUND CREDIT ENROLLMENT
FULL-TIME/PART-TIME
SPRING 2005

	<u>FULL-TIME</u>		<u>PART-TIME</u>		<u>TOTAL</u>		<u>PERCENT</u>	
	STUDENTS	FTE	STUDENTS	FTE	STUDENTS	FTE	Full-time	Part-time
Asnuntuck CC	431	388	1,020	325	1,451	713	29.7%	70.3%
Capital CC	793	692	2,692	1,128	3,485	1,820	22.8%	77.2%
Gateway CC	1,544	1,338	3,818	1,413	5,362	2,750	28.8%	71.2%
Housatonic CC	1,292	1,125	3,225	1,288	4,517	2,413	28.6%	71.4%
Manchester CC	2,172	1,916	3,500	1,374	5,672	3,290	38.3%	61.7%
Middlesex CC	751	651	1,509	567	2,260	1,218	33.2%	66.8%
Naugatuck Valley CC	1,877	1,626	3,401	1,305	5,278	2,931	35.6%	64.4%
Northwestern Ct. CC	486	423	1,000	314	1,486	737	32.7%	67.3%
Norwalk CC	1,757	1,572	3,898	1,468	5,655	3,040	31.1%	68.9%
Quinebaug Valley CC	492	426	1,132	415	1,624	841	30.3%	69.7%
Three Rivers CC	961	865	2,546	967	3,507	1,833	27.4%	72.6%
Tunxis CC	1,181	1,007	2,542	905	3,723	1,912	31.7%	68.3%
SYSTEM TOTAL	13,737	12,029	30,283	11,469	44,020	23,498	31.2%	68.8%

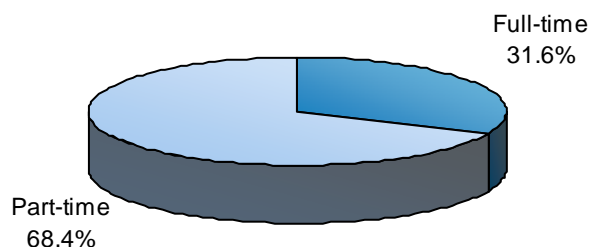
FULL-TIME/PART-TIME
SPRING 2005 COMBINED FUND CREDIT ENROLLMENT



CONNECTICUT COMMUNITY COLLEGES
GENERAL FUND CREDIT ENROLLMENT
FULL-TIME/PART-TIME
SPRING 2005

	<u>FULL-TIME</u>		<u>PART-TIME</u>		<u>TOTAL</u>		<u>PERCENT</u>	
	STUDENTS	FTE	STUDENTS	FTE	STUDENTS	FTE	Full-time	Part-time
Asnuntuck CC	431	388	894	299	1,325	688	32.5%	67.5%
Capital CC	793	692	2,689	1,127	3,482	1,819	22.8%	77.2%
Gateway CC	1,543	1,337	3,642	1,367	5,185	2,704	29.8%	70.2%
Housatonic CC	1,292	1,125	3,225	1,288	4,517	2,413	28.6%	71.4%
Manchester CC	2,129	1,877	3,463	1,359	5,592	3,236	38.1%	61.9%
Middlesex CC	735	638	1,466	558	2,201	1,196	33.4%	66.6%
Naugatuck Valley CC	1,877	1,626	3,342	1,293	5,219	2,919	36.0%	64.0%
Northwestern Ct. CC	478	415	972	310	1,450	725	33.0%	67.0%
Norwalk CC	1,757	1,572	3,898	1,468	5,655	3,040	31.1%	68.9%
Quinebaug Valley CC	492	426	1,109	409	1,601	835	30.7%	69.3%
Three Rivers CC	961	865	2,512	959	3,473	1,824	27.7%	72.3%
Tunxis CC	1,181	1,007	2,443	882	3,624	1,889	32.6%	67.4%
SYSTEM TOTAL	13,669	11,968	29,655	11,319	43,324	23,287	31.6%	68.4%

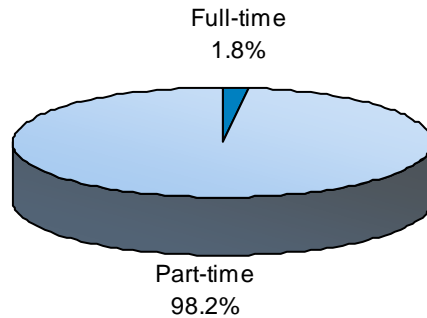
FULL-TIME/PART-TIME
SPRING 2005 GENERAL FUND CREDIT ENROLLMENT



CONNECTICUT COMMUNITY COLLEGES
EXTENSION FUND CREDIT ENROLLMENT
FULL-TIME/PART-TIME
SPRING 2005

	<u>FULL-TIME</u>		<u>PART-TIME</u>		<u>TOTAL</u>		<u>PERCENT</u>	
	STUDENTS	FTE	STUDENTS	FTE	STUDENTS	FTE	Full-time	Part-time
Asnuntuck CC	0	0	126	25	126	25	0.0%	100.0%
Capital CC	0	0	5	1	5	1	0.0%	100.0%
Gateway CC	0	0	184	46	184	46	0.0%	100.0%
Housatonic CC	0	0	0	0	0	0		
Manchester CC	0	0	234	54	234	54	0.0%	100.0%
Middlesex CC	16	13	47	9	63	22	25.4%	74.6%
Naugatuck Valley CC	0	0	61	12	61	12	0.0%	100.0%
Northwestern Ct. CC	0	0	55	12	55	12	0.0%	100.0%
Norwalk CC	0	0	0	0	0	0		
Quinebaug Valley CC	0	0	23	6	23	6	0.0%	100.0%
Three Rivers CC	0	0	34	9	34	9	0.0%	100.0%
Tunxis CC	0	0	99	23	99	23	0.0%	100.0%
SYSTEM TOTAL	16	13	868	197	884	210	1.8%	98.2%

FULL-TIME/PART-TIME
SPRING 2005 EXTENSION FUND CREDIT ENROLLMENT

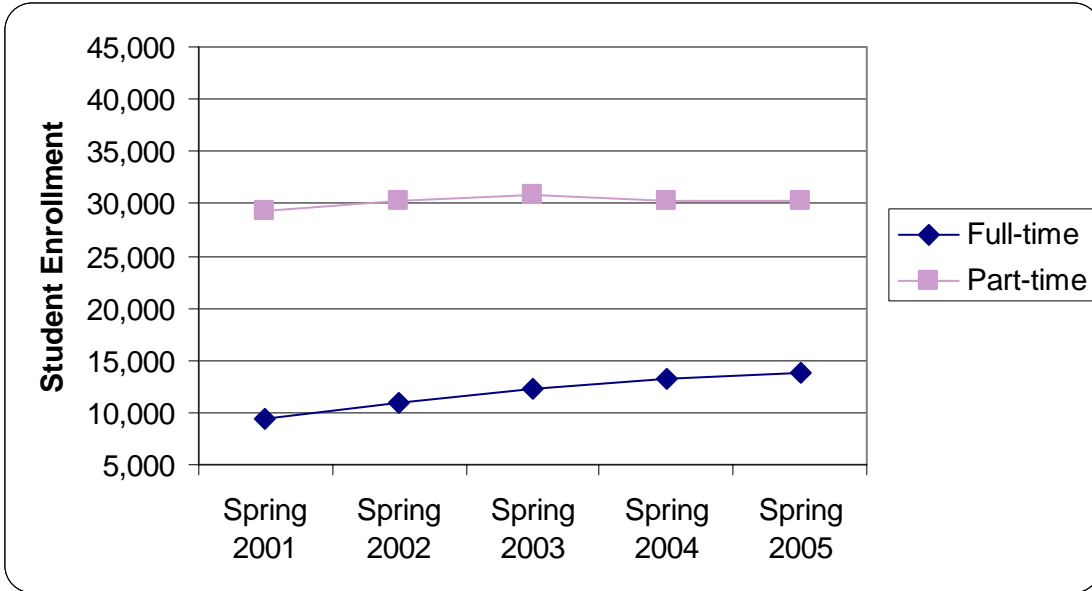


CONNECTICUT COMMUNITY COLLEGES
 COMBINED FUND STUDENT ENROLLMENT HISTORY
 SPRING 2001 - SPRING 2005

Student Enrollment

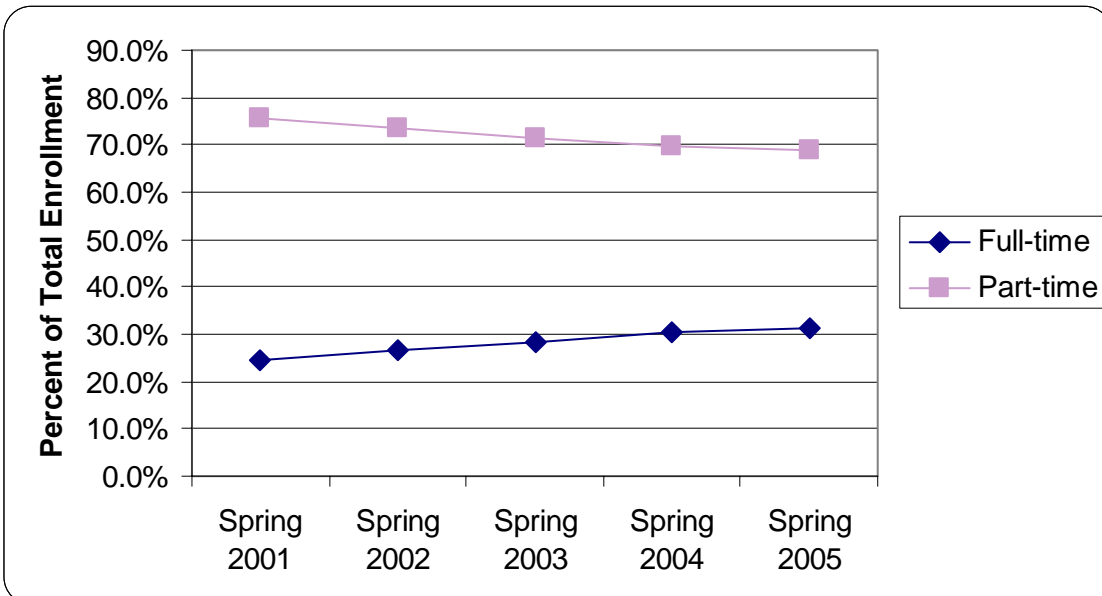
	Spring 2001	Spring 2002	Spring 2003	Spring 2004	Spring 2005
Full-time	9,494	10,937	12,313	13,159	13,737
Part-time	29,320	30,211	30,902	30,176	30,283
Total	38,814	41,148	43,215	43,335	44,020

51.5% increase in full-time attendance since Spring 2000



Percent of Total Enrollment

	Spring 2001	Spring 2002	Spring 2003	Spring 2004	Spring 2005
Full-time	24.5%	26.6%	28.5%	30.4%	31.2%
Part-time	75.5%	73.4%	71.5%	69.6%	68.8%
Total	100.0%	100.0%	100.0%	100.0%	100.0%

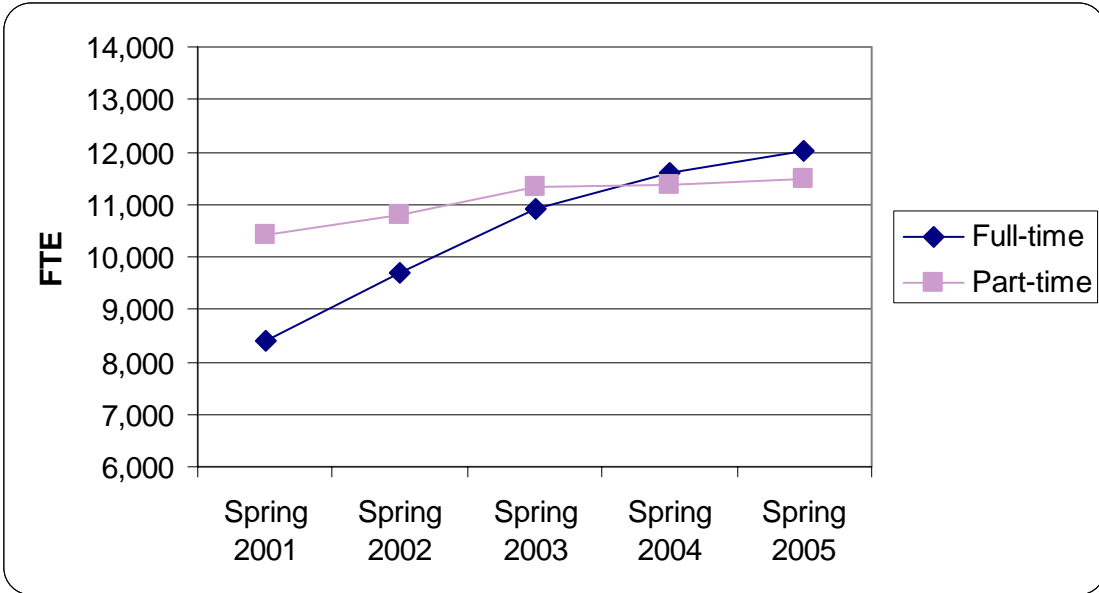


CONNECTICUT COMMUNITY COLLEGES
 COMBINED FUND FTE ENROLLMENT HISTORY
 SPRING 2001 - SPRING 2005

FTE Enrollment

	Spring 2001	Spring 2002	Spring 2003	Spring 2004	Spring 2005
Full-time	8,411	9,695	10,911	11,581	12,029
Part-time	10,427	10,791	11,344	11,368	11,469
Total	18,838	20,486	22,255	22,949	23,498

49.5% increase in full-time FTE since Spring 2000



Percent of Total FTE

	Spring 2001	Spring 2002	Spring 2003	Spring 2004	Spring 2005
Full-time	44.6%	47.3%	49.0%	50.5%	51.2%
Part-time	55.4%	52.7%	51.0%	49.5%	48.8%
Total	100.0%	100.0%	100.0%	100.0%	100.0%

